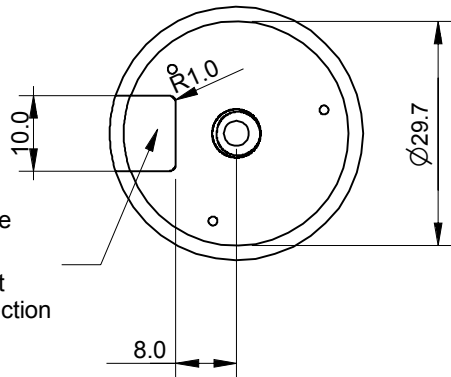
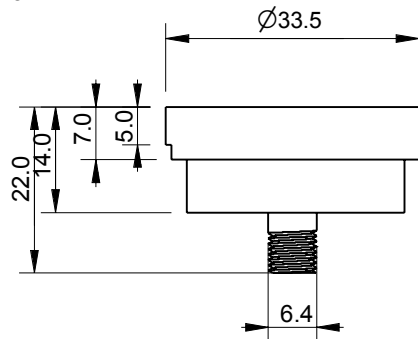


Shutter fixing
 3 holes at 120° on 24.0Ø pitch circle
 tapped 0-80 UNF through part.
 First hole offset at 45°
 from centre line.



Shutter cable entry
 Mill out slot 10mm wide
 using 2mm Ø cutter.
 Extend through to start
 of internal threaded section
 depth 9mm

