

Comparing health inequalities in Scotland to elsewhere in Europe

Frank Popham

University of St Andrews

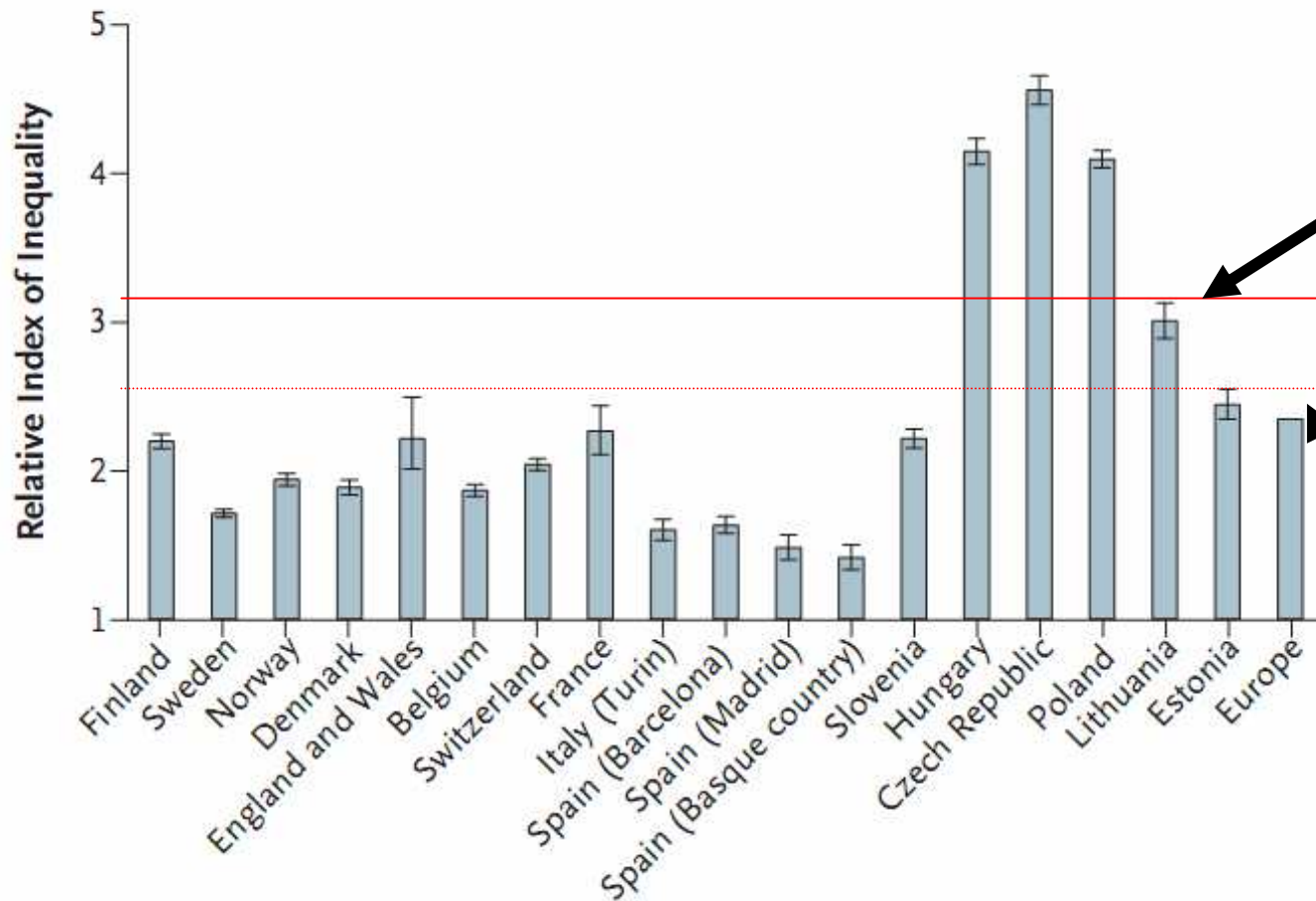
Background

- European health inequalities comparisons
- Scotland excluded
- Replicate for Scotland
- New methods

Data and methods

- Scottish Longitudinal Study & Scottish Health Survey 2003
 - SLS = 5.3% sample 1991 and 2001 census
 - SLS = Linked to vital events
 - Slope and Relative Index of Inequality
 - Replicate
- Human Mortality Database
 - Lost life expectancy

A Education, Men

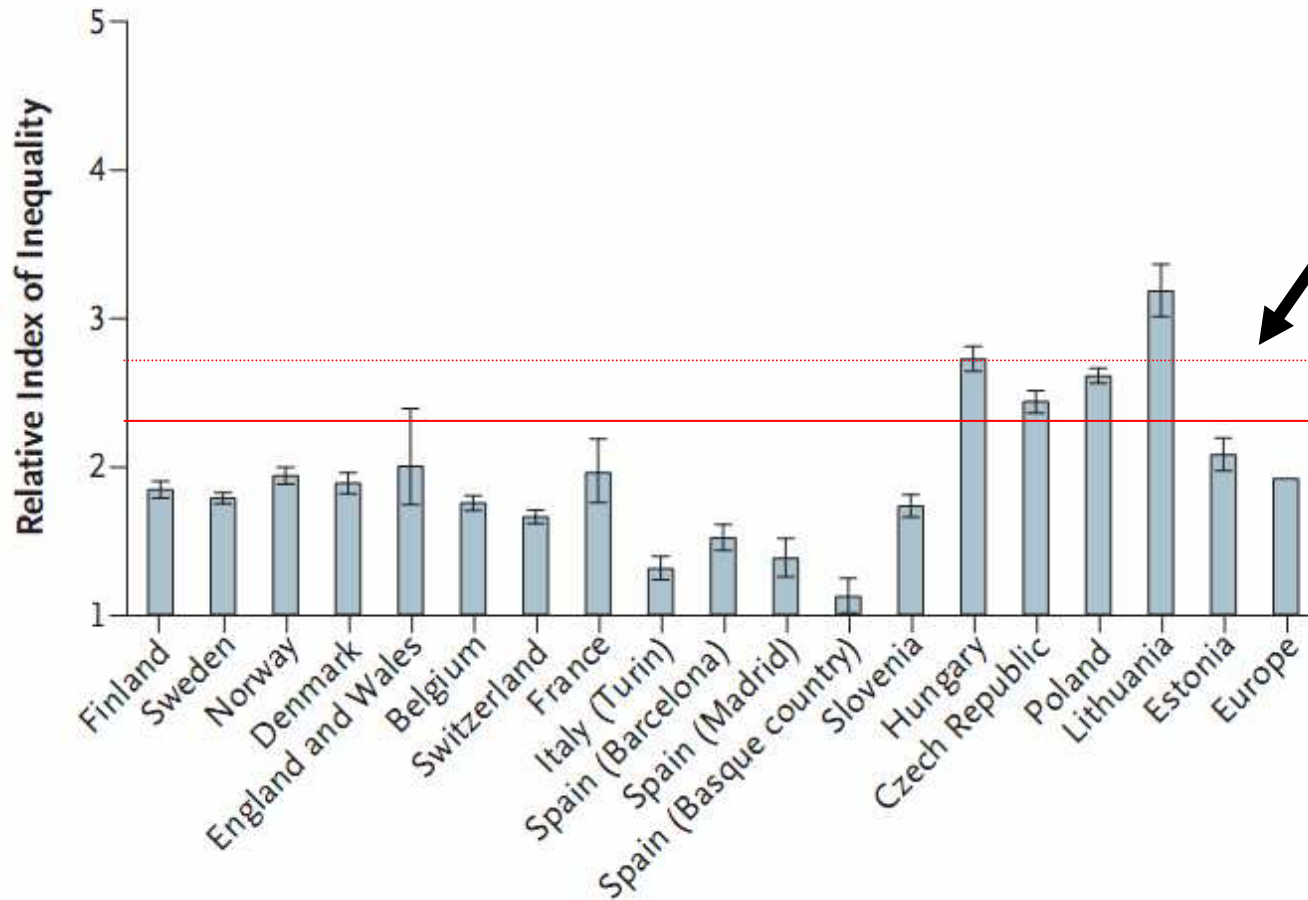


Scotland 1991
= 3.19

Scotland 2001
= 2.59

Source: Mackenback et al (2008) & Scottish Longitudinal Study

B Education, Women



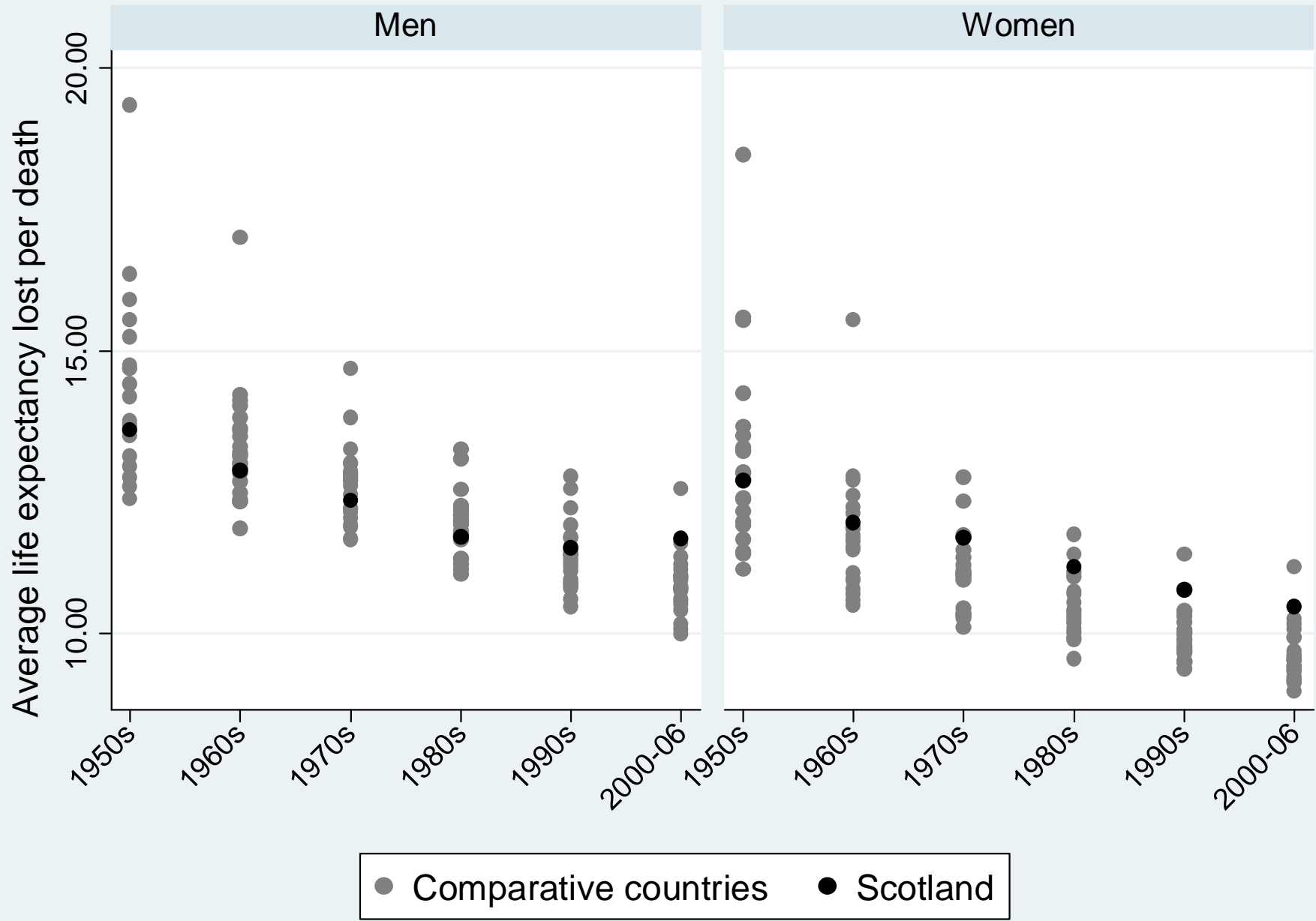
Scotland 2001
= 2.85

Scotland 1991
= 2.21

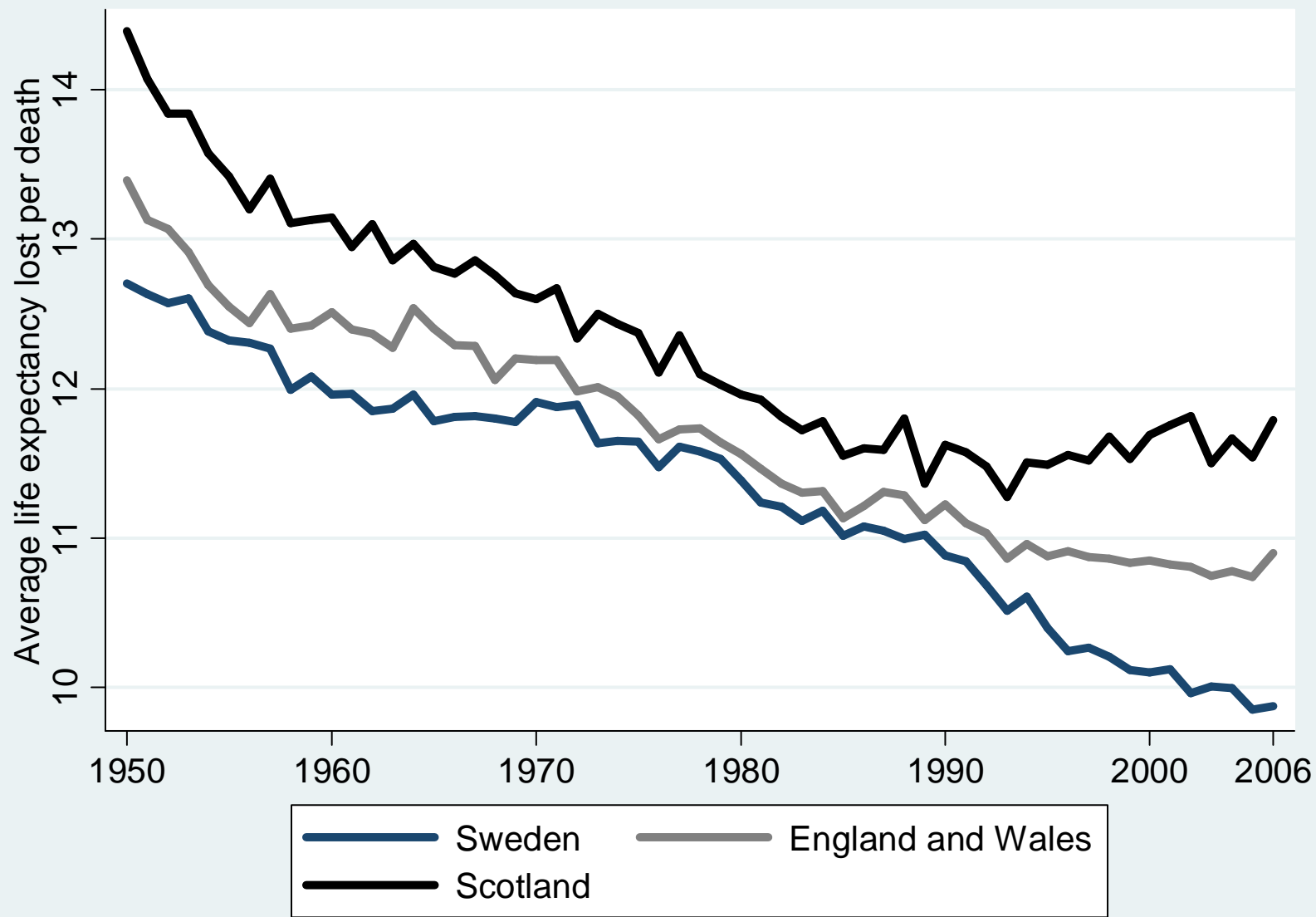
Source: Mackenback et al (2008) & Scottish Longitudinal Study

Further results

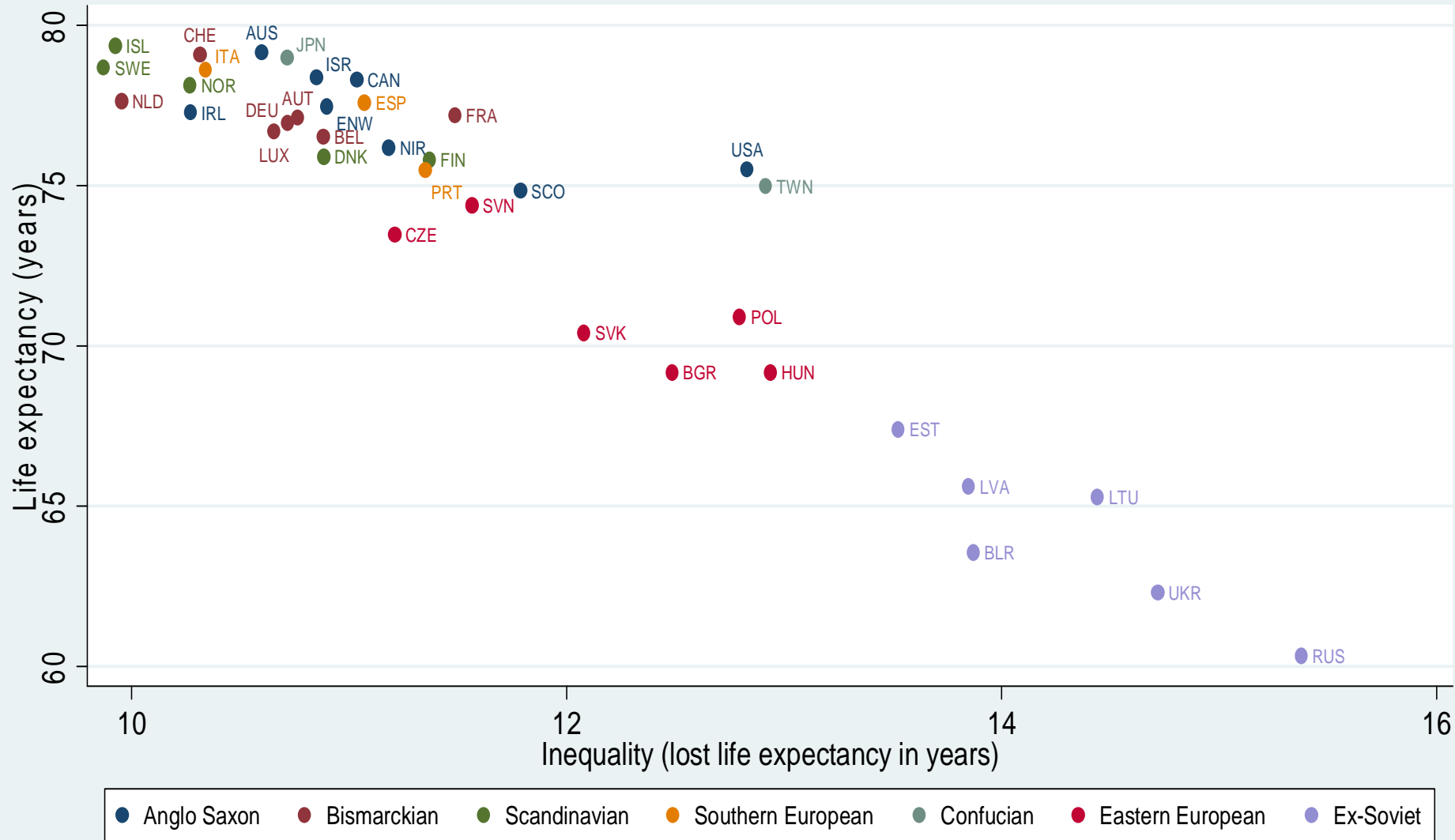
- Smoking related causes important for inequalities in mortality
- Highest inequalities in smoking comparatively
- Inequalities in self rated health comparatively very high in Scotland
- Obesity inequalities not comparatively high



Source: Human Mortality Database



Source: Human Mortality Database



Source: Human Mortality Database

Scotland from Sweden



Source: Human Mortality Database

Conclusion

- Large health inequalities in Scotland compared to many other countries
 - Evidence of widening overtime
- Need to include Scotland in future comparative projects
- Alternative measures exist
 - Capture social determinants? (Yes I would argue)

Acknowledgements

- Co-author was Paul Boyle
- Thanks also to Chris Dibben and Clare Bamba
- Thanks to John Frank and Scottish Collaboration for Public Health Research and Policy for inspiration and funding
- The help provided by staff of the Longitudinal Studies Centre – Scotland (LSCS) is acknowledged. The LSCS is supported by the Economic and Social Research Council (ESRC)/Joint Information Systems Committee, the Scottish Funding Council, the Chief Scientist's Office and the Scottish Government. The authors alone are responsible for the interpretation of the data. Census output is Crown copyright and is reproduced with the permission of the Controller of HMSO and the Queen's Printer for Scotland