

Example: Let $G = \{t, a, n\}$ and $H = \{n, a, t\}$. Then $G \cap H = \{a, n, t\}$.
Note that here $G = H = G \cap H$.
Example: Let $C = \{2, 6, 10, 14, \dots\}$ and $D = \{2, 4, 6, 8, \dots\}$. Then $C \cap D = \{2, 6, 10, 14, \dots\} = C$.

Example: Why is the location where a street and an avenue cross called an intersection? The location is contained in both the street and the avenue.

Example: Let $E = \{d, a, y\}$ and $F = \{n, i, g, h, t\}$. Then $E \cap F = \emptyset$.
Note: In all the examples, the intersection is a subset of each set forming the intersection, i.e., $A \cap B \subseteq A$ and $A \cap B \subseteq B$.

Disjoint Sets: Two sets whose intersection is the empty set are called disjoint sets.
Example: Let $E = \{d, a, y\}$ and $F = \{n, i, g, h, t\}$. Since $E \cap F = \emptyset$, the sets E and F are disjoint sets.

Intersection

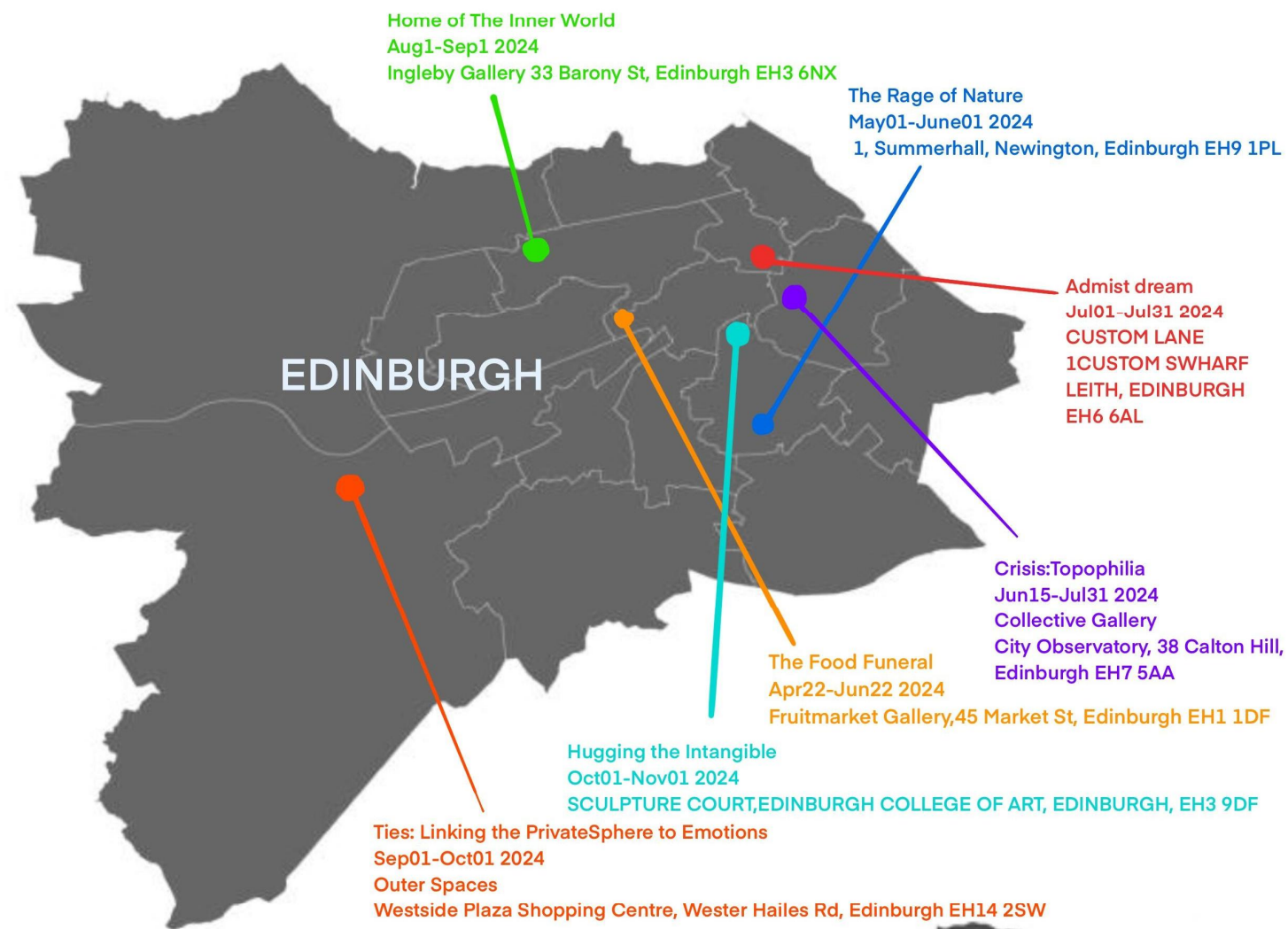
Curator: Linjie Qiu, Lingli Chen, Manman zhou, Yuyue zhao
Curator: Jiaying Yuan, Simeng Huang, Kangming Zuo

INFINITE SET

Curator: Yaoyi Cheng, Kanna

Index

Venue Map	-----	04
Dear Readers	-----	05
Set 1: Union		
- Introduction	-----	07
- Exhibition list		
- The Food Funeral	-----	08
<i>Simeng Huang</i>		
- Crisis ~Topophilia~	-----	10
<i>Jiaying Yuan</i>		
- The Rage of Nature	-----	12
<i>Kangming Zuo</i>		
- Curators' Voices ~Interviews~	-----	14
Set 2: Intersection		
- Introduction	-----	17
- Exhibition list		
- Ties: Linking the Private Sphere to Emotion	-----	18
<i>Lingli Chen</i>		
- Home of the inner world	-----	20
<i>Linjie Qiu</i>		
- Admist dream ~A voyage between illusion and reality~	-----	22
<i>Yuyue Zhao</i>		
- Hugging the intangible ~Art and emotion connectivity~	-----	24
<i>Manman Zhou</i>		
- Curators' Voices ~Words of the Curator~	-----	26
Set 3: Infinite Set		
- Introduction	-----	29
- Exhibition list		
- Fluid Traces ~Exploring Identity In the Liquid Society~	-----	30
<i>Yaoyi Cheng</i>		
- Unraveling Apron Strings ~Redefining Motherhood through Creativity~	-----	32
<i>Kanna Guo</i>		
-Curators' Voices ~Duo Curatorial Dialogue~	-----	34
Afterword	-----	36



Unraveling Apron Strings
Mar30-Apr26 2025
Chisenhale Gallery,64 Chisenhale Road, London E3 5QZ



Unraveling Apron Strings
May11-Jun07 2025
Joshibi Art Museum
1900 Magurodai, Minami-ku, Sagamihara-shi, Kanagawa, Japan 252-8538
Joshibi University of Art and Design, 10th Building, 1st Floor



Fluid Traces
Sep01-Sep14,2024
South Block,60-64 Osborne St,Glasgow G1 5QH



Dear Readers

Thank you for reading this catalogue.

We invite the audience to traverse the mathematical rigor and the artistic passion to discover the complex and wondrous interweaving between them. This collective exhibition takes set theory in mathematics as a source of inspiration, and uses it as a framework to analyze the infinite dimensions and deep connections of art.

"Intersection" is the resonance of artists' emotions and wisdom, and the place where ideas collide and merge. In this chapter, we will see how curators from different artistic styles and cultural backgrounds find intersections on common themes and ideas, demonstrating the universal value and commonality of art.

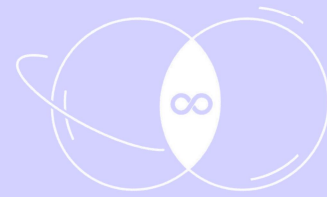
The "Union" is the unique color of the individual artist, which is the display of their unique originality. This section emphasizes the independent and wonderful perspective of each artist, showing how they carved out their own territory in the vast world of art. It is a way for artists to talk to the world and a stage for their self-expression.

"Infinite Set" represents the future of art - open, forward-looking, full of possibilities. This is a stage for artists to release their passion and explore the unknown. Whether through the use of new materials, the application of new technologies, or the proposal of new ideas, it reflects that the boundaries of artistic creativity are constantly being pushed forward.

In this exhibition, every work is an interpretation of "being", and every interaction is an exploration of "possible". We hope to experience the unity and diversity of art in this art universe composed of intersection, complement and infinite set, and understand the power of creation and innovation.

"Set" Editorial Team
Students of Contemporary Art Theory
The University Of Edinburgh





Set 1

Union

UNION

Set 1: Union

In nowadays's society, the interaction between humans and nature is a complex and nuanced topic. We live in an integrated natural environment, and our existence and destiny are inextricably linked to it. From antiquity to the present, from literature to art, science to philosophy, demonstrating people's awareness, praise, and impact on nature. Let us go through this world of beauty and meaning together, reflecting on our close relationship with nature, as well as our responsibility and respect for it.

Union is a set about people and nature, the set highlights the major problems facing society today, and there will be three distinct programs that will take you on a journey to discover people and environment in various circumstances.

Simeng Huang
Jiaying Yuan
Kangming Zuo

THE FOOD FUNERAL

Curated by *Simeng Huang*

Curator's Comment Regarding the Project

About the Exhibition

The Food Funeral exhibition, a creative and exciting artistic journey, will take place at the Fruit Market. In this environmental-themed show, we will take the audience through three distinct settings to investigate the visual and sensory experiences of food waste.

To begin, entering the Farewell Ceremony area is like attending a food funeral. The artworks on show here will elicit the emotional resonance of food loss in a deeply compelling way, prompting spectators to consider how much we cherish and appreciate our food supplies. Next, viewers will enter the Relic section and go through the land of food wrecks. In this food graveyard, the artists creatively illustrate the destruction of the natural world caused by food waste, prompting the spectator to reflect on environmental conservation. Finally, enter the area of Rebirth, which is filled with optimism and vigor. The artworks showcase the possibilities of food reuse and regeneration, prompting the audience to consider how to make effective use of food resources and live in peace with nature on a personal level.

Public Programmes

Workshop

Create your food

Curator's Guided Tour

Simeng Huang

...

ARTIST
Barbara Gollackner
Nakezia Avilly
Yum Tang
Zeger Reyers
Eloise Ricchiuto

...

Location: Fruitmarket

Exhibition time: 22.04.2024 - 23.06.2024

CRISIS

TOPOPHILIA

ARTISTS

Maya Lin

Fabrice Monteiro

Angela Blažanović

KIM DORLAND

Yang Yongliang

Sofía Gallisá Muriente

**CURATED BY
JIAYING YUAN**

EDINBURGH, COLLECTIVE GALLERY

EH7 5AA

15 JUNE--31 JULY 2024

WEDNESDAY-SUNDAY, 10AM-5PM

Crisis

~Topophilia~

Curated by *Jiaying Yuan*

Curator's Comment Regarding the Project

About the Exhibition

Technological advances have brought us into the Anthropocene, where the world is facing the same severe environmental crisis. This exhibition is inspired by Chinese-American geographer Yi-Fu Tuan's book *Topophilia*, which is a combination of the Greek words *topos* (place) and *-philia* (love), meaning "the emotional bond between people and the earth", encompassing all the emotional connections between human beings and the physical environment.

The exhibition focuses on artists' concern for the environment in the places where they live, from Chinese-American Maya Lin's concern for the changing ecosystems of the Chesapeake Bay region, the largest estuary in the United States, to Chinese artist Yang Yongliang's creative combination of urban imagery and landscapes, reflecting on the devastation of nature caused by China's rapid urbanisation, To the Puerto Rican artist Sofía Gallisá Muriente, who reflects on the history and current situation of Puerto Rico as a result of the natural disasters that have occurred in her hometown in her video works. We hope that through the exhibition, the energy of art will bring the public's attention to the sustainability of the environment and the homeland.

Public Programmes

Workshop

Permanent Garden

Curator's Guided Tour

Jiaying Yuan

...

THE RAGE OF NATURE

Curated by Kangming Zuo
Wed 1 May 2024–Sat 1 June 2024
Mon–Sun (12 pm–6 pm)
Venue: Summer Hall

ARTISTS:

Mary Mattingly
Maya Lin
Chris Jordan
Zheng Bo
Mark Dion
Eva Jospin



Photograph: Kangming Zuo

Curating Project

The Rage of Nature

Curated by *Kangming Zuo*

Curator's Comment Regarding the Project

About the Exhibition

Since the advent of the Anthropocene, humans have continuously altered nature through various means to meet societal needs. However, in the pursuit of economic development and social progress, we often overlook the harmony and coexistence with nature. Actions such as building dams in canyons to provide ample electricity, land reclamation to alleviate land scarcity in certain areas, excavating mountains for exquisite marble, and deforestation to stimulate local economic development are all forms of environmental destruction. Although these actions provide us with economic benefits and convenience, they inadvertently cause immense harm to natural ecosystems. It is based on a profound understanding of these realities that I have invited six artists with unique perspectives to participate in this exhibition. Through different artistic forms and creative techniques, they explore the relationship between humans and nature, presenting profound reflections on environmental issues, and echoing our exploration of harmonious coexistence between humans and nature.

Additionally, the exhibition will provide a creative workshop, offering materials for art enthusiasts to engage in artistic practice, encouraging them to express their creativity. Furthermore, we will invite some artists to hold relevant lectures, sharing their creative experiences and processes, interacting with the audience, and discussing how they perceive the relationship between humans and nature.

Public Programmes

Art lecture
Zheng Bo

Artist Interview
Mary Mattingly

Curators' Voices

~Interviews~

Q: *Jiaying Yuan*
A: *Set1 Curators*

Q: In your opinion, what is the biggest issue that curators must deal with?

Jiaying: I think funding sources are a major challenge for curators, especially in the field of contemporary art. Funding for arts and cultural projects often relies on a variety of sources, but each source has different challenges and limitations. The uncertainty of government funding, the strings attached to private sponsorships and donations can be a limitation to a curator's creativity. As a novice curator, seeking the right financial support and controlling the budget took up a lot of my time

Q: Some viewers may find contemporary art abstract and difficult to approach, is there anything you would like to say to them?

Jiaying: "A thousand readers have a thousand Hamlets". In the beginning, you can try to visit the exhibition without preconceived expectations. Allow yourself to have your own feelings and interpretations of the artworks. In addition, we have prepared a wealth of public activities to encourage everyone to participate!

Q: Can you briefly introduce the works of the artists in the exhibition?

Kangming: Of course, in the exhibition "The Rage of Nature," visitors can admire artworks such as Zheng Bo's "Fern Romance" (2018), Mary Mattingly's "Proposals: Cuenca sculptures" (2022), and Mark Dion's "Blood Coral" (2019). These works represent the different viewpoints of the artists, helping viewers to consider the relationship between humans and nature from different perspectives. They are free to use their imagination and contemplate the meanings behind these artworks.

Q: What was the reason for choosing this curatorial space?

Kangming: The choice of venue is a crucial aspect in curating an exhibition. Factors such as the convenience of the location, the accessibility of public transportation nearby, and whether visitors can easily find the venue are all considerations I typically think about when selecting a curatorial site. However, sometimes the choice of venue is also closely related to your theme. For example, initially, I chose the Scottish National Gallery as the venue. However, it became apparent that the Scottish National Gallery is a gallery with national attributes, and the theme of nature is quite broad—it's not exclusive to Scotland. Therefore, selecting the Scottish National Gallery as the venue was not a good choice. That's why I decided to choose Summerhall instead.

Q: The exhibition is called *The Food Funeral*, why do you want to use this title?

Simeng: The exhibition's main goal is to raise awareness about food waste in the context of environmental conservation. We know that food waste is a major issue in the UK right now, and the 'funeral' is a means to remember the food that was wasted while also drawing attention to the problem and urging everyone to participate in environmental preservation activities. We also encourage everyone to participate in environmental conservation efforts, to respect food, and to maintain the planet's habitat.

Q: What is the vision of the layout of the exhibition hall, and what is the correlation between the artists' works

Simeng: The exhibition will be held at the Fruitmarket. The exhibition will be divided into three main spaces: The Farewell Ceremony, The Relic, and The Rebirth. We have selected contemporary artworks related to the theme, they are all related to food and nature and placed them in these three spaces, which I hope will evoke different levels of thinking about human activities and nature.

Q: What is the best way for someone to view your work and offer support?

Jiaying: If you have any questions, welcome to email me. My email is jiayingyuanjane@gmail.com

Simeng: Feel free to contact me via my email: Hannah.011129@gmail.com

Kangming: My email is Kangming2023@ccmail.win, Just get in touch with me anytime.

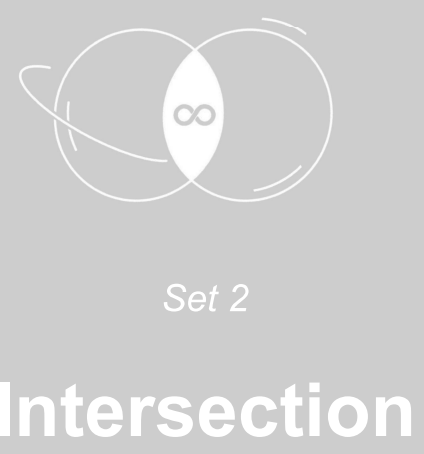


INTERSECTION

Set 2: Intersection

The intersection of sets is the set that contains all the elements belonging to both A and B and no other elements. In this section called "Intersection", the concepts of each curator's proposal have similarities and intersections, aptly reflecting the wonderful dialogue between art. Just as the intersection $A \cap B$ of a collection looks for common elements, the curators' proposals are also searching for resonances, points of art that can evoke a sense of empathy and reflection.

In this intersection, a large network connects the deepest emotional experiences of human beings, from the most intimate reflections to the broadest social interactions. It explores how humans understand and express their emotions through art, and how these emotions play out in our lives. From Linjie Qiu's emphasis on the external reflection of the human inner world to Lingli Chen's focus on emotional links in the private sphere, from Manman Zhou's presentation of embracing and emotional relationships to Yuyue Zhao's use of dreams to explore the expression of the human emotions and the soul, each curator provides a unique perspective through their projects, contributing to this intersection of "human and emotion".



Lingli Chen
Linjie Qiu
Yuyue Zhao
Manman Zhou

Ties: Linking the Private Sphere to Emotions

Curated by *Lingli Chen*

Curator's Comment Regarding the Project

About the Exhibition

"Ties" provides an in-depth understanding of how the private sphere, both mental and physical, can be a central arena for emotional expression and identity construction through the work of the artists. More than just a series of artworks on display, this is a narrative about the intertwining of personal identity, emotional connection, and creativity.

Starting from Murray Bowen's theory of family systems and Erving Goffman's concept of self-territoriality, the exhibition centers on the theme of the private sphere, and the artist's artistic interpretations of the private sphere, both mentally and physically: From JP Terlizzi's reconnection of personal and family relationships to Kyle Dunn's emotional isolation of people in private spaces, from Sining Zhu's reflection on the lack of personal and family emotions to Joanna Piotrowska's comparison of private spaces to personal emotional shelters, we can feel the overall diversity and relevance of the exhibition.

Public Programmes

Workshop

Make Your Private Sphere Visible

Lectures

Ellen Winner

Julie Brownlie

TIES: LINKING THE PRIVATE SPHERE TO EMOTIONS

CURATED BY LINGLI CHEN



ARTISTS

FRANCESCA HUMMLER
JOANNA PIOTROWSKA
JP TERLIZZI
KYLE DUNN
LUCILLE LÉGER
QIUQIN LYU
SINING ZHU
XUEYI HUANG

09.01-10.01

OPEN EVERYDAY
10AM-5PM

OUTER SPACES,
WESTSIDE PLAZA,
EDINBURGH, EH14 2SW

home of the inner world

“Ingleby Gallery”

33 Barony St,
Edinburgh EH3 6NX

ARTISTS

Do Ho Suh
Hyeyoung Hwang
Charlotte Keates
Fengyang Zeng
Piotr Fafrowicz

08.01-09.01

Opening Hours
11:00 — 18:00

Visiting Days
Tuesday — Sunday

Monday closed

CURATED BY LINJIE QIU

**HOME OF
THE INNER WORLD**

Curated by *Linjie Qiu*

Curator's Comment Regarding the Project

About the Exhibition

Join us this late summer in Edinburgh for our exhibition, "Everyone's Inner World". Through the theme of "home", we'll explore the inner worlds of ordinary people. Inspired by artist Do Ho Suh's exploration of transnational migration, our exhibition transforms the concept of "home" into both an idealized concept and a physical reality.

Hyeyoung Hwang portrays houses in various forms, each representing her emotional state. Charlotte Keates captures serene house scenes, evoking nostalgia and familiarity. Fengyang Zeng takes us through 100 different homes, revealing the inner stories of each family. Fafrowicz shares heartwarming childhood memories, depicting intimate narratives.

Join us as we delve into the hidden depths of the human psyche through the lens of "home" this summer in Edinburgh.

Public Programmes

Workshop

Home of the Soul

Lectures

Fengyang Zeng

Do Ho Suh

ART EXHIBITION

"ADMIST DREAM"

A VOYAGE BETWEEN
ILLUSION AND REALITY

1 CUSTOMS WHARF
LEITH, EDINBURGH
EH6 6AL

7.1-7.31
MON-FRI 9AM-5PM
SAT 10AM-5PM
SUN 11AM-4PM

ARTISTS

EVELYN TAN
JEEYOUNG LEE
TUUKZS
LUDOVICA DE SANTI
MACIEK MARTYNIUK
PAUL ROUSTEAU

CRUATER BY YUYUE ZHAO

Curating Project

Admist Dream

~A voyage between illusion and reality~

Curated by *Yuyue Zhao*

Curator's Comment Regarding the Project

About the Exhibition

Dream art can also shape emotions and the soul to a certain extent. When we enter a dream, it is like entering an illusory and bizarre world, and this illusion and reality are subtly connected. The exhibition aims to create a dream space, an art world where virtuality and reality alternate between dreams, fantasy and immersion. Enter the exhibition, explore the boundaries between consciousness and subconsciousness, reality and virtuality, and deeply explore the experience and expression of human emotions and souls in dreams, to achieve an immersive dream art experience.

Evelyn Tan uses dreams to help shape her art, incorporating memories and emotions from her dreams into her paintings. Tukzs endeavours to make it possible for viewers to trace scenes from their own dreams. Paul Rousteau explores the blurring of boundaries and searches for inner emotions, presenting a world between dreams and reality. Ludovica De Santis embraces the truest emotions of dreams by allowing reality to collide with the illusion of dreams. Maciek Martyniuk builds nests in the world of dreams, offering new worlds. Jee Young Lee Each installation is like a dream, feeling one's emotions and rediscovering one's own personal story.

Public Programmes

Workshop:

Dream journal

Lectures:

Tuukzs

Ludovica De Santis

The Embrace Spectrum

~ Love and Intimacy in Art ~

Curated by *Manman Zhou*

Curator's Comment Regarding the Project

About the Exhibition

Welcome to Embracing the Spectrum: An Artistic Exploration of Love and Emotion, an art exhibition dedicated to exploring the depths of love, embrace and emotion.

In the exhibition you will find a range of works, from painting, photography to video art, each of which is an exploration and expression of the artist's emotional authenticity; Arleene Correa Valencia's work touches on the intertwining of immigrant identities and emotional lives, while ANAÏS PROUZET's creations explore emotional dialogues between the individual and the environment; Sola Olulode's work is a reflection of her own emotional life through her colourful and colourful paintings. Olulode expresses the warmth and acceptance of love through her colourful paintings, while Photographer Hal captures the emotional intensity of moments through tight body combinations, and Margaret Salmon and Alex explore intimacy and connection in everyday life through film and photography.

Visit The Embrace Spectrum: Love and Intimacy in Art to explore, feel and rediscover the vital experience of human intimacy.

Public Programmes

Workshop

Experience perceptual material
throw pillows

Watch a dance performance



SCULPTURE COURT

EDINBURGH COLLEGE OF ART,
EDINBURGH, EH3 9DF

ARTISTS

ARLEENE CORREA VALENCIA

ANAIS PROUZET

SOLA OLULODE

PHOTOGRAPHERS HAL

MARGARET SALMON

ALEX

EXHIBITION DATES

MID-TERM 10.1-11.1

OPEN EVERYDAY

10 A.M.-5 P.M.

CURATED BY MAMAN ZHOU

"The Embrace Spectrum: Love and Intimacy in Art"

Curators' Voices

~Words of the Curator~

Lingli Chen:

Today's exploration of emotion in art includes how emotion drives creative thinking, reveals an artist's unique personality, and has deep social significance. I chose artists in this exhibition who explore the infinite possibilities of emotional space as well as physical space. Conversation and understanding begin at every intersection. We curators told our own stories while creating a narrative. This story transcends individuals and concerns shared emotions.

Manman Zhou:

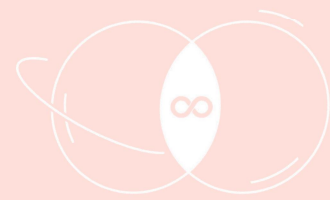
As the curator of this exhibition, I am honored to introduce "Between Touches: The Artistic Expression of Love and Emotion," an exhibition aimed at exploring the most fundamental human emotions through visual art. In this diverse art exhibition, our artists delve into the multifaceted aspects of emotion and love through their unique artistic languages. I sincerely invite you to participate in this exhibition, not only to appreciate these magnificent artworks but also to experience and reflect on our shared human emotions through these works and activities. In "Between Touches," let us together explore those seemingly ordinary yet profound emotional connections, rediscovering the invisible bonds that connect us all.

Yuyue Zhao:

Artists show their unique insights into dreams and the creation of illusory reality. Each work is an exploration into the depths of emotion, an attempt to unravel the mystery of human emotional complexity. As we cross the boundary between reality and dreams, we gain insight into the emotions and imaginations that lurk in subconscious minds. It is a spiritual journey and a profound insight into the emotional world of human beings. Walk into the exhibition to hear the artist's story, but also feel your own story. In an exhibition center, everyone is a curator, and everyone can tell a story.

Linjie Qiu:

As a curator, I believe we should be cautious and humble in understanding people's various voices about art and art museums. The relationship between art and its social attributes and expression context has changed, and we need to re-understand the spiritual core and social demands of each individual shaped by this era. In a dynamic practice, entering science, thinking about art, and allowing art to truly form meaningful encounters with people living in this city.



Set 3

Infinite Set

INFINITE SET

Set 3: Infinite Set

In the context of globalization, the formation and transformation of identity seem boundless, just like the infinite set in mathematics, full of infinite possibilities and variables. This is an area of exploring the diversity and complexity of personal identity. Here, we use the mathematical concept of "infinite sets" to symbolize the infinite possibilities and diversity of identity, where each individual's identity is a set containing countless elements and levels.

This section demonstrates how artists explore self-awareness, gender roles, cultural belonging, and social positioning in the context of globalization through selected contemporary art works. These works not only reflect the artist's personal experiences and insights, but also pose challenges and inspirations to the audience's identity recognition. Yaoyi shows a multidimensional exploration of identity mobility, belonging, and self-awareness through the perspective of artists from different cultural backgrounds living in Scotland. The works of these artists reflect the dynamic interaction between individuals and collectives, regions and the world, as well as between tradition and modernity. Kanna focuses on gender themes, particularly as female artists attempt to strike a balance between family roles and personal creativity. These works challenge the boundaries of traditional gender roles and explore whether society provides enough space for women to showcase their personalities and talents.

Yaoyi Cheng
Kanna Guo

Artist

Aqsa Arif

Haneen Hadiy

Paria Goodarzi

Remi Jablecki

YouLiang Zhu

FLUID

EXPLORING IDENTITY IN THE LIQUID SOCIETY

TRACES

🕒 Time

9.1-9.14 | 9:00-17:00

📍 Address

South Block, 60-64 Osborn
St, Glasgow G1 5QH

Curator: Yaoyi Cheng

Curating Project

Fluid Traces

~Exploring Identity In the Liquid Society~

Curated by **Yaoyi Cheng**

Curator's Comment Regarding the Project

About the Exhibition

In contemporary society, individual and cultural identities seek positioning in the constantly changing flow, forming a "liquid society" full of uncertainty and change. Fluid Traces is an art exhibition that explores identity diversity and fluidity. It invites Scotland artists from different cultural backgrounds to explore how to understand and express "identity" in this constantly changing world through their unique perspectives and diverse art forms. These artworks not only reflect the artists' understanding and reinterpretation of their own cultural roots, but also touch on the impact of globalization and cultural integration on individual identity perception.

This exhibition will display the works of five artists. Aqsa Arif is a Scottish Pakistani artist who enjoys exploring themes of displacement, immigration, and dispersion. Haneen Hadiy often praises the beauty and culture of Iraq through coconut trees, striving to challenge misunderstandings and mainstream cultural narratives about Iraq. Paria Goodarzi is an artist born in Iran, whose artistic focus is on cultural and political transfer, as well as contemporary human conditions, cultural identity, and displacement. Remi Jablecki comes from Poland and his large oil paintings are filled with themes of Polish tradition and horticultural practices. He enjoys exploring growth, labor, queer people, and social belonging; Youliang Zhu is very interested in the complexity of human tenderness, cultural heritage, and individual and collective memory.

Public Programmes

Workshop

Draw your own mobile map

Lectures:

Paria Goodarzi

Unraveling Apron Strings

~Redefining Motherhood through Creativity~

Curated by *Kanna Guo*

Curator's Comment Regarding the Project

About the Exhibition

In today's globalized society, women artists, particularly mothers, face challenges in their careers due to career and family issues, lack of recognition in the art world, limited exhibition opportunities, childcare concerns, and poor understanding from their families. Despite being considered good wives and mothers under traditional societal divisions, women should also be cared for. They are independent individuals with dreams that deserve respect, and their comfort zone should not be limited to the kitchen and baby's room. It is crucial to recognize and respect women's unique needs and desires in the society.

The artworks for exhibitions are divided into 3 refined themes: *Momspire* shows female artists reconciling the tension between caring for their families and careers with a sense of confidence and add them as inspiration to their work, demonstrating a high level of professionalism; *Momodus*, is a satirical representation of the neglect and discrimination in today's male-dominated society, aiming to break the traditional social norms, while also an interpretation of the independent women that female artists have shown in the contemporary era; *Morethers*, explores motherhood in a broader gender context, exploring the wider meaning of motherhood in the artworks of the LGBTQ+ artists, as well as breaking down the stereotypical "what motherhood should look like".

Public Programmes

Creative Workshop

Your Dream Apron

Internet Live Stream

Mama's Talk

Donation Box

for single mothers to start their own business



Curators' Voices

~Duo Curatorial Dialogue~

Kanna: Yaoyi, it's great to have this dialogue with you about our individual curatorial projects. The name of our small group is "*infinite set*", and I've always liked its icon of the Möbius loop in maths. It's as if the world of dichotomies has been destroyed, more and more complex possibilities is been creating...For my curatorial project, what I want to destroy is the traditional social structure of family division of labour, the stereotype of "male works out, female holds home" should be discarded. How did you come to know the identity of Infinity?

Yaoyi: The idea of 'infinity' in my project can be understood as the infinite possibilities of the identities of Scottish artists from different cultural backgrounds. Like the fluid society I mentioned, in such a social context, individual identities are also fluid and unfixed. Traditional definitions of identity are broken down and individuals have more freedom to explore and define their own identity. For individuals, we may move from one place to another for various reasons, which may be due to study, work or other reasons. In fact, in an increasingly globalised world, mobility has become a common experience for many people, which is why I chose this theme. So why did you choose this theme, Kanna?

Kanna: As a Chinese who grew up in Japan and is now studying in the UK, I can appreciate what you're saying :)
About my curating inspiration, it was when I was choosing a birthday present for my mom, I saw magazines recommending lots of cleaning items and kitchenware, but for fathers it was often cigarettes and alcohol, some of their interests, which made me wonder why motherhood is so often bound up with housework.
Yaoyi, is there a piece of artwork you particularly like about "fluid identity"?

Yaoyi: This is indeed the case.
I remember Zhu Youliang's work *Our Only Guidance Is Our Homesickness* as a prime example of "fluid society"; her family drifted from Mongolia to settle in central China, she was born in Wuhan, grew up in South East Asia and now lives in the UK. Her life's trajectory has been one of fluidity, causing her to constantly question, explore and define her identity. And what's your favourite artwork in your proposal?

Kanna: I have to say I really like Louise Bourgeois's sculpture *Maman*, which is a large sculpture in the shape of a spider showing maternal strength - not the soft kind. For practical reasons, however, it could not be shown in my on-site indoor exhibition;(it's too heavy to move, not feasible.

Yaoyi: This is really a real factor that you have to consider as a curator when curating an exhibition. In fact, due to budgetary reasons in the curation, my original choice of artists was changed and the venue was changed to a public space in Glasgow belonging to *Wrapsstudio*, which is spacious and easily accessible. Most of the artists I chose live in Glasgow, so that's where I chose... Kanna, how did you take these factors into consideration?

Kanna: The two venues I chose for the on-site exhibitions are *Chisenhale Gallery* in London and *Joshibi Art Museum* in Tokyo, both of which are in the vicinity of some natural parks that could attract some family audiences to drop by. I have designed a workshop on site to engage domestic women in the creative process, which is also part of the exhibition.
Yaoyi, I saw you plan to have a workshop, too. What's it gonna be like?

Yaoyi: Yes, my workshop would like to help participants better understand the fluidity of identity in the context of globalisation and provide a platform for them to share how their experiences have helped them to find their place in a changing environment.

Kanna: Sounds good. As you say "changing environment", what do you think our identity will become in the future in this infinitely evolving world?

Yaoyi: In my view, identities in the future are expected to become more fluid, diverse and complex. The development of digital technology, which allows individuals to explore and express themselves in unprecedented ways, may lead to the diversification and individualisation of identities.
How about you?

Kanna: For me, I hope that in the future, all people will be free from the shackles of stereotypes of identity. There could be a shift from "what I should do because I am" to "what I want to do".

Afterword

In this collective curatorial exhibition, we have embarked on a profound exploration of human experience and existence through three thematic collections: Union, Intersection, and Infinite Set. Each segment delves into different yet interconnected realms of our lives, illuminating the countless ways in which art captures and influences our interactions with the world and ourselves.

Union immerses us in the fundamental relationship between humans and nature. The artworks and discussions in this category not only highlight our admiration and awe of nature but also underscore the significant challenges and responsibilities we face in preserving it. Through a journey that intertwines art, literature, and science, Union encourages a reflective discourse on our role within the natural world and calls for renewed respect and stewardship of our environment.

Intersection reveals common themes and emotional resonances that support diverse curatorial propositions. Each curator, through their unique perspective, presents elements that resonate universally—empathy, reflection, and emotional depth. From intimate personal reflections to broader societal engagements, this collection weaves a tapestry of human experiences, demonstrating the power of art to connect us at a fundamental level.

Infinite Set challenges and expands our understanding of identity in the context of globalization. The selected artworks explore issues of self-awareness, cultural belonging, gender roles, and social positioning, reflecting the complex interplay between individuality and collective experiences. This section offers a platform for artists to explore and express the fluid dynamics of identity, challenging traditional norms and inviting viewers to reconsider their own views of self and society.

This exhibition not only fosters a dialogue among artworks but also among viewers, inviting each to confront and question their understanding of nature, emotion, and identity. Let us carry forward the insights and inspirations gleaned here, and continue to reflect on the profound connections and infinite possibilities that define the human condition.

MA Contemporary Art Theory Curating (2023-2024)

*All following lists are in alphabetical order
by surname*

-INSTRUCTORS

Julie Louise Bacon
Gabrielle “Gabi” Barkess-Kerr
Adam Benmakhlouf
Frances Davis
Beth Dynowski

-GROUP TUTOR

Beth Dynowski

-CURATORS

Lingli CHEN
Yaoyi CHENG
Simeng HUANG
Kanna GUO
Linjie QIU
Jiaying YUAN
Yuyue ZHAO
Manman ZHOU
Kangming ZUO

SET

Collective Programme Catalogue

-Collective Poster Design

Kangming ZUO

-LOGO Design

Kanna GUO

-Venue Map Design

Jiaying YUAN

-Visual Elements Design

Kanna GUO
Kangming ZUO

-Individual Poster Design

All Curators

-Writing

Yuyue ZHAO
Dear Readers

Simeng HUANG

Set1 Intro

Lingli CHEN

Set2 Intro

Yaoyi CHENG

Set3 Intro

Manman ZHOU

Afterword

All Curators

Individual pages & Curator's Voices

Set1 Interviewer

Jiaying YUAN

-Layout

Kanna GUO
Linjie QIU

-Proofreading

Linjie QIU