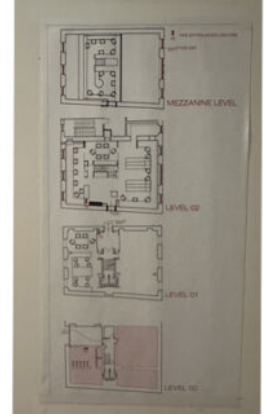


2. Research case studies: Richard Murphy Architects & Cirrus Logic offices



As part of our research, we visited two local offices which acted as case studies for our design project.

Richard Murphy Architects office is located just off the Royal Mile. The office neighbours another Richard Murphy project – a small residential building which Richard noted provides clients, upon their arrival at the office, with some insight into the work they have undertaken. The space itself is located in a former mission hall, with a lofty pitched ceiling and large Venetian windows which allow in a lot of natural light – quite surprising given that they face out onto the narrow close. An upper mezzanine level built into the centre of the space maximised the available floor space effectively, giving the reception area and meeting rooms below it a cosy feel, without making the adjoining office area feel cramped.

Cirrus Logic's offices are also located in an historic area of Edinburgh: Quartermile. The site is located at the former Edinburgh Royal Infirmary however the office itself is in a new development constructed of glass and steel. Despite the inspiration for the interiors focussing more on the company's work in creating semiconductors and microchips (there was a

lot of detailing around the office nodding to musical instruments, for which Cirrus creates parts), there was a harmonious flow between the interior and exterior with mirroring of certain patterns and colours. Clever use of acoustic panelling in the suspended ceiling which were both functional and provided visual interest. Definitely a high budget design – but with lots of details which can be applied in practical ways to projects of varying sizes and budgets.