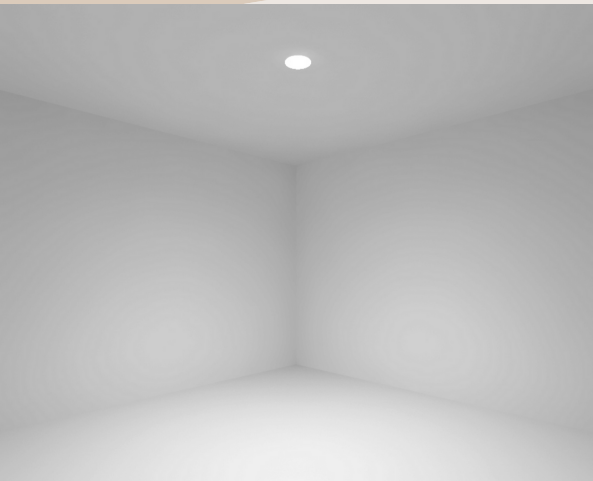


# NOTES & CLASS TASK

## WEEK 6



### Lighting Design Layer

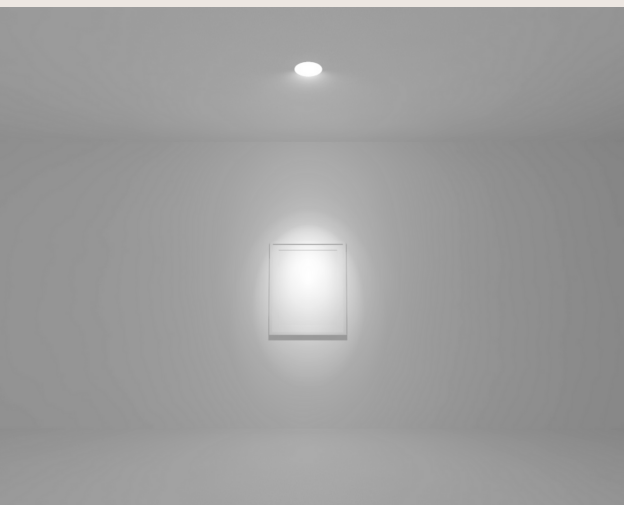
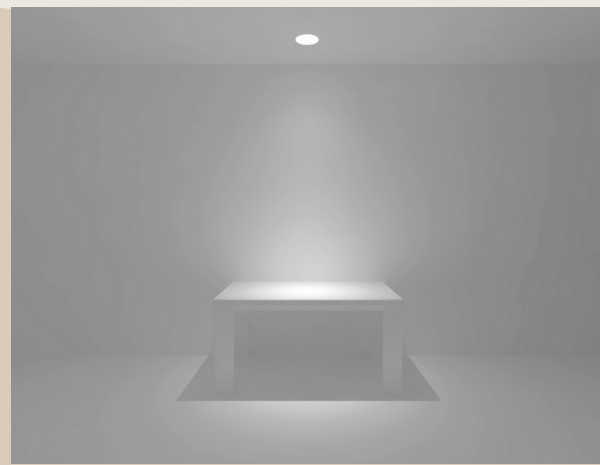


#### 1. general/ambient

the ambient layer provides the illumination required for occupants to see the space in its entirety. Most often, this layer is constructed through downlighting, with the initial layout set when the architectural plans are finalized.

#### 2. Task lighting

the ambient layer provides the illumination required for occupants to see the space in its entirety. Most often, this layer is constructed through downlighting, with the initial layout set when the architectural plans are finalized.



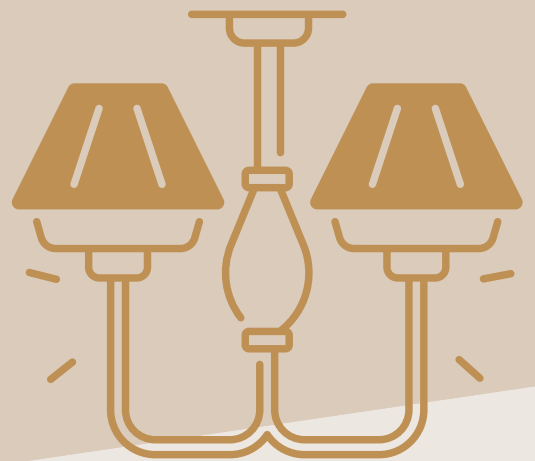
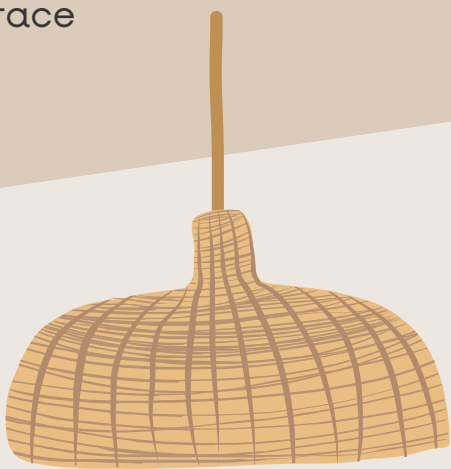
#### 3. Accent lighting

The accent layer adds a decorative finish by complimenting the other two layers and highlighting architectural features like columns, floral arrangements, and wall art.

### Luminaire Type

#### Surface lighting

The surface mounted light sits on top of a flat surface like the flat part of a ceiling and protrudes away from the surface



#### Pendant lighting

Pendant fixtures hang down from the ceiling by a cord, cable, or chain. They are usually found in spaces with higher ceilings.

#### Recessed lighting

Recessed lighting is hidden away, usually in a ceiling cavity, so you can't see the light source directly. This type of indirect lighting, usually in the form of a downlight, can be used effectively in any room of the home





# Track Lighting

Track lighting can provide a lot of flexible lighting options. There are multiple luminaires on one track, with multiple circuits and voltages.

## Luminaire Label

	Ceiling mounted luminaire		Ceiling light outlet		Spotlight, double head
	Enclosed ceiling luminaire		Recessed ceiling light		Exit sign, pendant mounted
	Wall light		Ceiling fan		Exit sign, wall mounted
	Down lighter		PC Ceiling light with pull cord		Light, pole mounted
	Outdoor lightning (standard or bollard)		Weatherproof landscape light		Light flood, pole mounted
	1-light bar		Light flood, wall mounted		Light, stanchion mounted
	Multi-light bar Light bar with glass globes.		Wall light outlet		Twin lights, pendant mounted
	Linear LED		Control keypad lighting		Emergency battery unit
	Surface fluorescent light		Emergency battery unit with two lights		Emergency single light, remote mounted
	Modular fluorescent fitting		Emergency duplex light, remote mounted		Inground light, floor mounted
	Emergency light		Spotlight, single head		Suspended light
	Illuminated emergency sign		Suspended lights		
	Emergency light, recessed				
	Light, surface mounted				

	Integrated light		Wall washer
	Night light		
	Lights, track mounted		
	Roadway light, cobra head		
	Louvers		Junction box
	Light, directional accent		Outlet for high-intensity on charge
	Light, directional aiming line		Lamp holder with pull switch
	Light, directional arrow		Track light with live end
	Lamp holder		Suspended light pendant
	Lamp holder with pull switch		Suspended spot light
	Vapor discharge lamp outlet		Surface mounted ceiling light fixture
	Accent light		Wall washer



# CLASS TASK

## WEEK 6

Yoga Studio.

- Some words to start your lighting strategy tree:

### Atmosphere

Calm

Luxurious

Inviting

Exciting

Mysterious

Relaxing

Dramatic

Cosy

Professional

Contemporary

Fun

Cheerful

positive

### Strategy

High contrast

Low ambient light

Accent light

Directional light

Sculpted light

Task lighting

Concentrated light

High brightness

Flexible lighting

Pinpoints of light

Coloured light

Diffuse light

### Luminaires

Uplight

Downlight

Wallwash

Recessed light

Pendant lights

Slot of light

Back light

Projected light

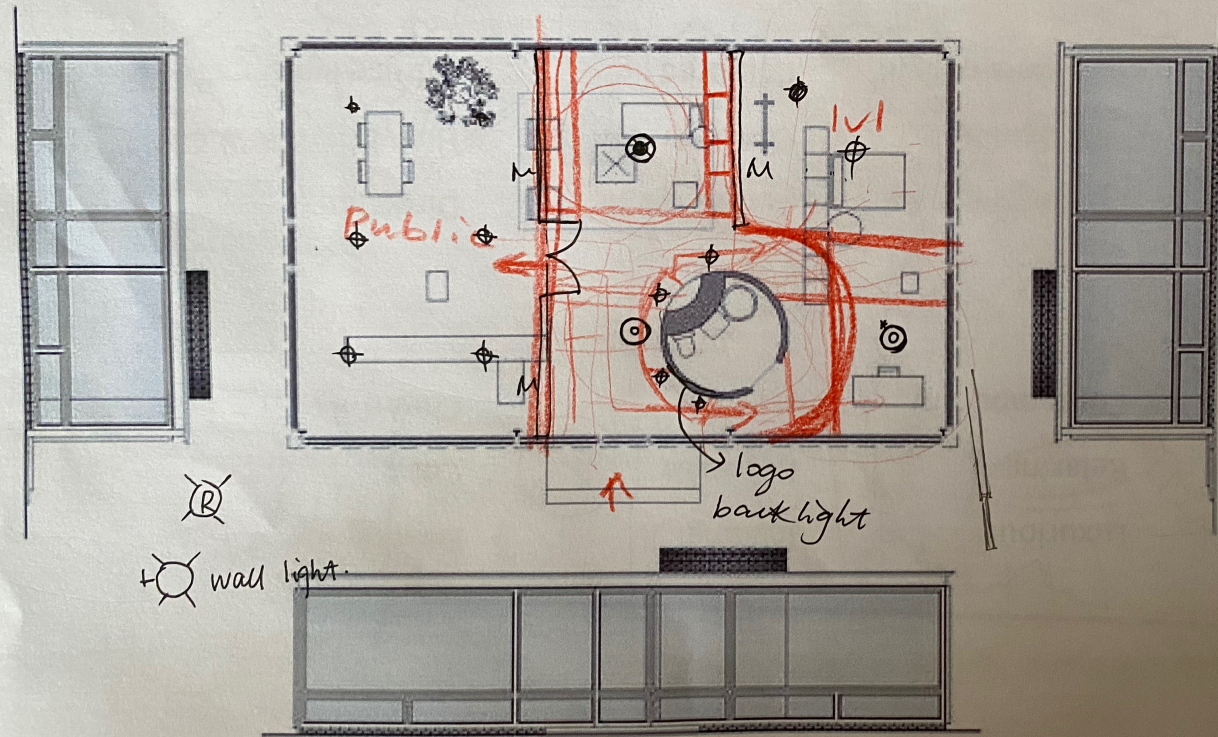
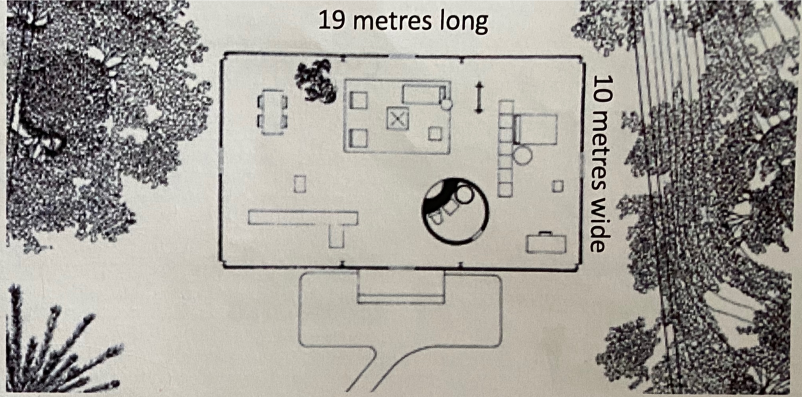
### Lamps

Warm light

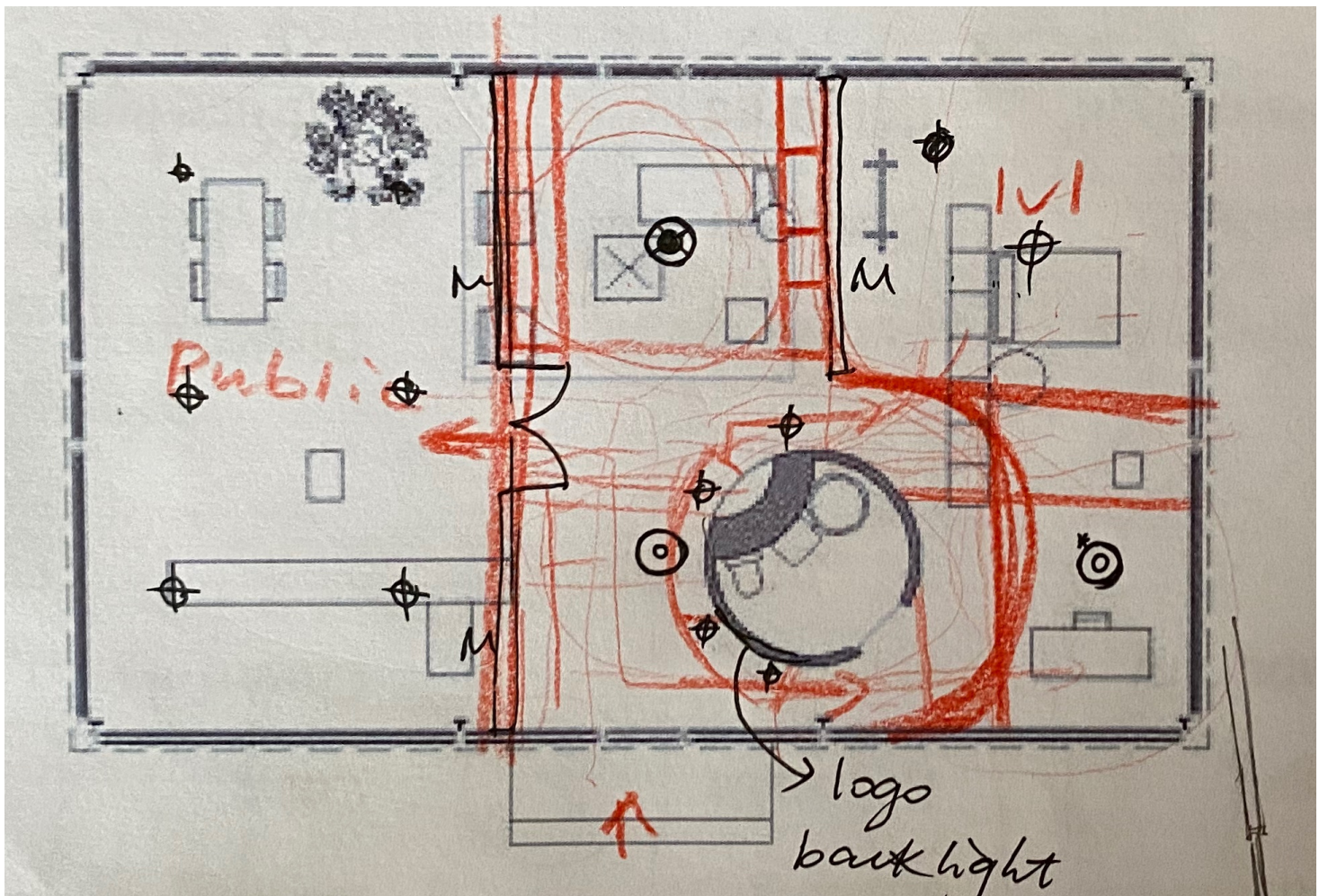
Cool light

Neutral light

Tunable light



Philip Johnson's House  
New Canaan



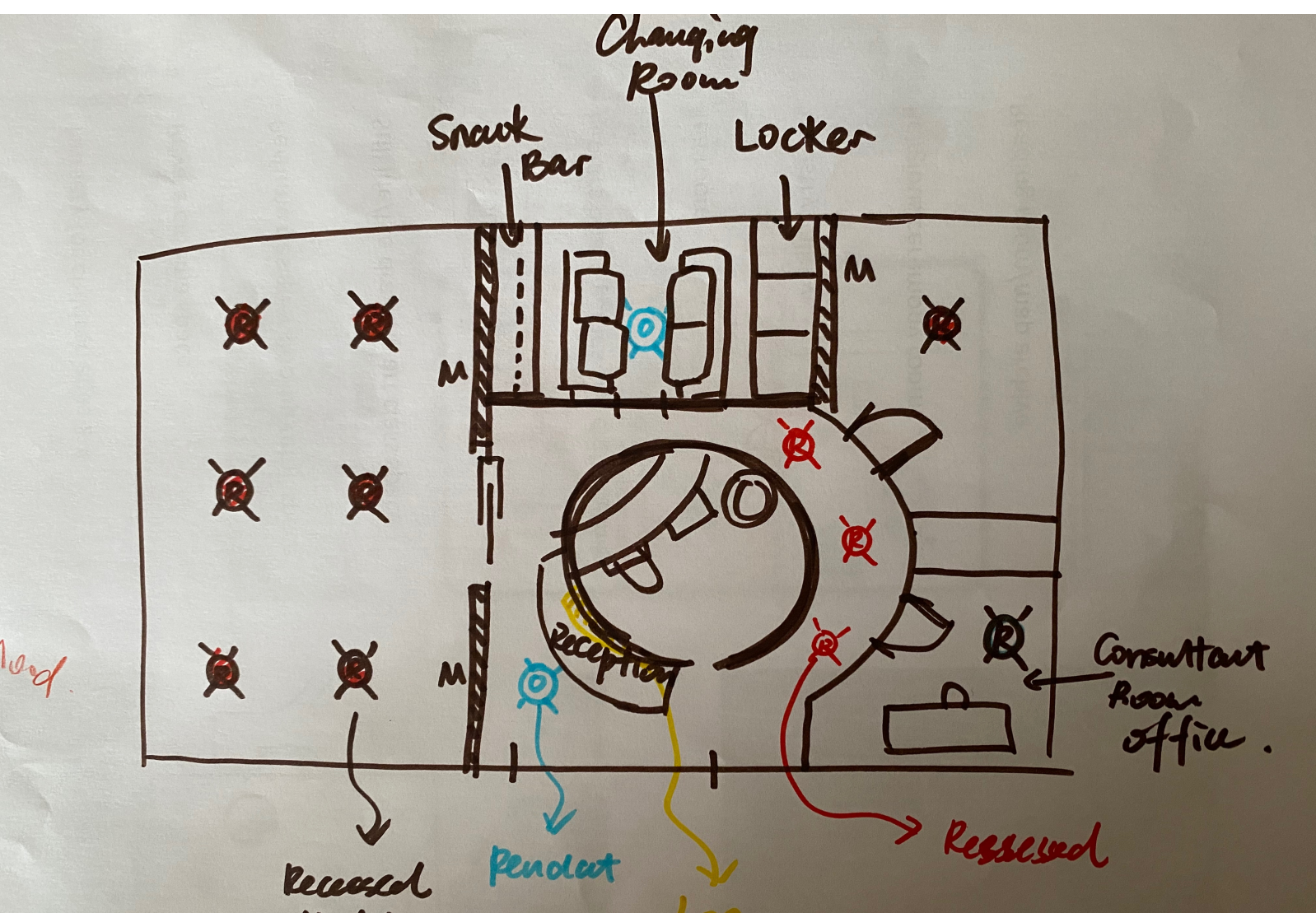


## Design Inspiration:



Yoga Studio should rely more on natural lighting instead of artificial light. Thus, the building would keep all the exterior glazing and let people more focus on natural light and outside.

## Design Explanation:



The lighting in this yoga room has been designed according to the different functional areas and lighting requirements.

In the reception area, the backlighting is used to brighten the LOGO. The recessed downlight would be used in this left public yoga room, private yoga classroom, office, and hallway as a way of finding.

However, the yoga classroom needs to have fabric covering up the recessed downlight so that when people do yoga and look up, they won't be hurt by the recessed light. The pendant lighting is used in the reception area, and the changing room is the accent layer for decoration.