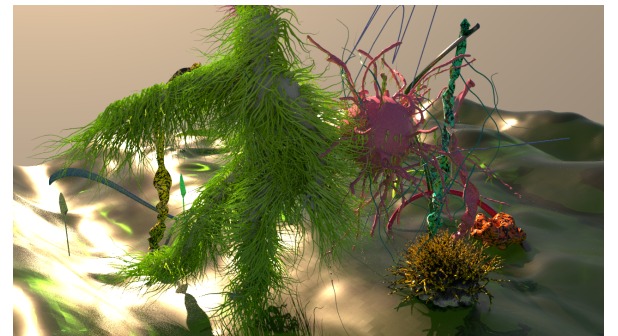
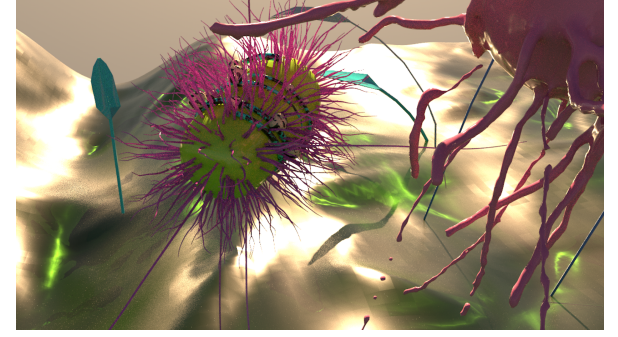
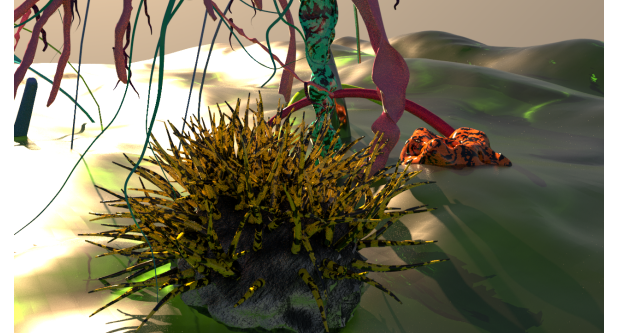
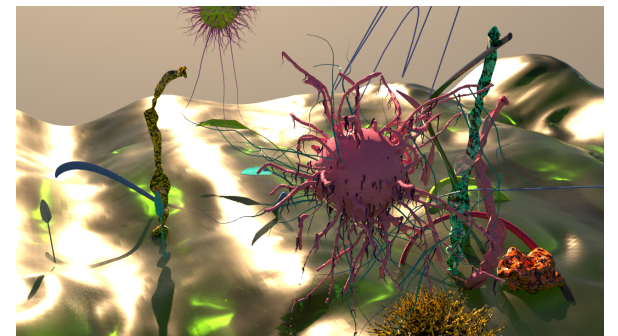


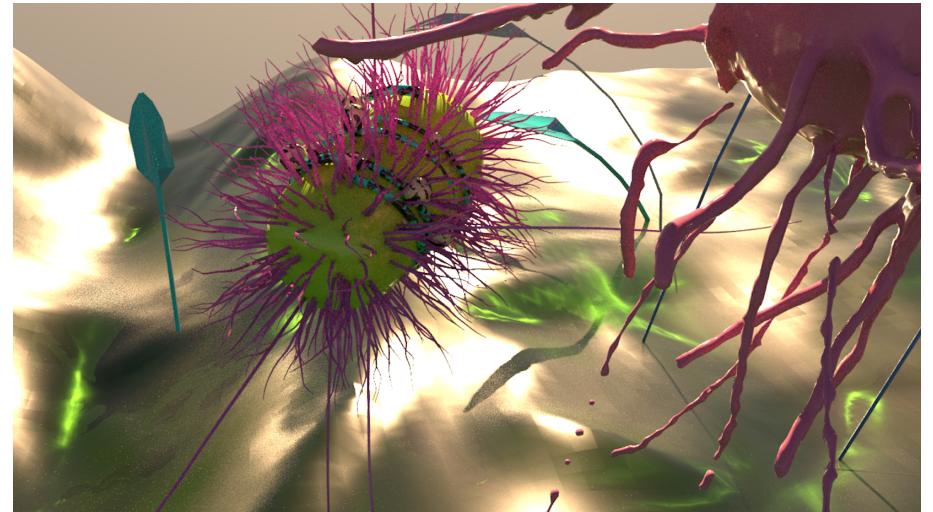
Being lost in a virtual garden



Do bionic plants dream of electronic gardens

What is the boundary between virtual plants and real plants?

Through my experiment, I want to use the dynamics of electronic plants to express vitality and emotion. The dynamic imitation began to upgrade gradually, from the movement pattern of single-celled organisms to the movement pattern of simulating human dance, and throwing aside the camouflage that simulates the appearance of plants, how do we define whether it is a human or a plant or a program setting?



part 2

Do bionic plants dream of electronic gardens

Influenced by the novel *Do Androids Dream of Electric Sheep*, the boundaries between people who once had to go back infinitely to find and the robots were put aside. People do not need to struggle about the boundaries that cannot be clearly defined, but find the existence of beauty and meaning in those vague and fragmented scenes. So in the second scene, I wanted to use the dynamics of electronic plants to express vitality and emotion.