



NATIONAL MUSEUM OF QATAR SHOP INTERIORS

BY KOICHI TAKADA ARCHITECTS
ECE GUL



DESIGN DETAILS

- **Architects :** Koichi Takada Architects
- **Year :** 2019
- **Area :** Museum Gift Shop 174 sqm, Children's Gift Shop 97 sqm
- **City :** Doha
- **Country :** Qatar
- **Clients :** Qatar Museum Authority
- **Project Management :** ASTAD Project Management
- **Main Contractor :** IMAR Trading & Contracting
- **Lighting Fixtures :** ERCO and IBL Lighting



- *The timber walls of the museum shops were inspired by Dahl Al Misfir (Cave of Light). Its organic architecture echoes Koichi Takada's vision of bringing nature back into architecture, establishing relationships that connect people and nature through design.*

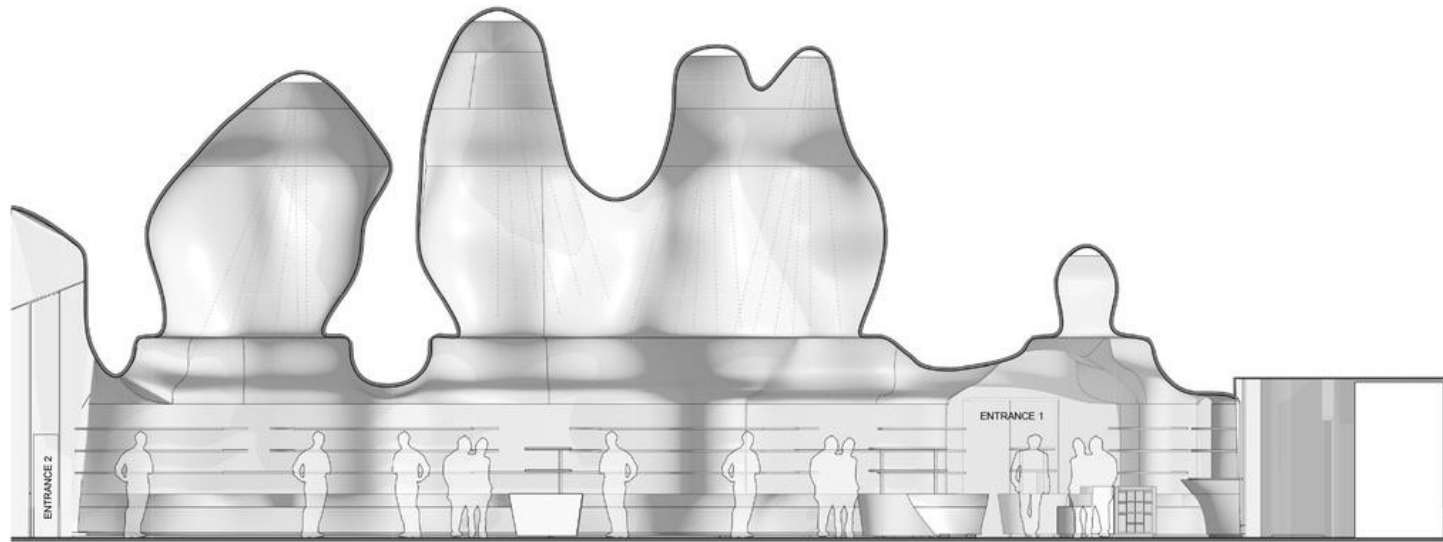


- No less than **40,000 individual pieces of sustainably sourced European oak** were designed with 3D modelling software. Each piece, **CNC-cut (Computer Numerical Control) in Italy** is entirely unique, fitting only with its exact complementary piece. The site assembly was an engineering and assembly challenges that was skilfully executed on-site **by Italian master carpenter, Claudio Devoto and his team of artisans**. The **40,000 pieces** were inserted in numbered order into a rib-like steel structure.



European Oak Timber

- *The heartwood varies from light tan to biscuit or deep brown*, with distinct bands of earlywood and latewood. The grain is usually straight, but irregular or cross grain can occur including some small knots. Rays and growth rings show an attractive figuring ("silver grain") when quarter sawn.
- A fairly hard, heavy and dense hardwood, with high crushing and bending strength, low stiffness and resistance to shock loads. Preboring is advised for nailing and screwing, and a reduced planing angle is advised for irregular or cross-grained stock. Oak timber turns satisfactorily, is good for gluing, painting, sanding, staining and varnishing and will take high polish. European oak can be darkened by fuming with ammonia. Due to tannins present in the timber, oak wood will react with ferrous metals when wet. Select non-ferrous (brass or stainless steel) fixings where possible. ***Extremely durable.***
- *Oak timber is often used for furniture and cabinetmaking*, quality joinery including church pews and pulpits, office furniture, kitchen cabinets, flooring (including parquet), coffins, boats and harbour work, truck bodies, cooperage for wines, cognac and beer. Planed oak timber is sliced for decorative veneers and rotary-cut to make plywood.



① BOOK SHOP SECTION 1
Scale 1:50 (A1)

