

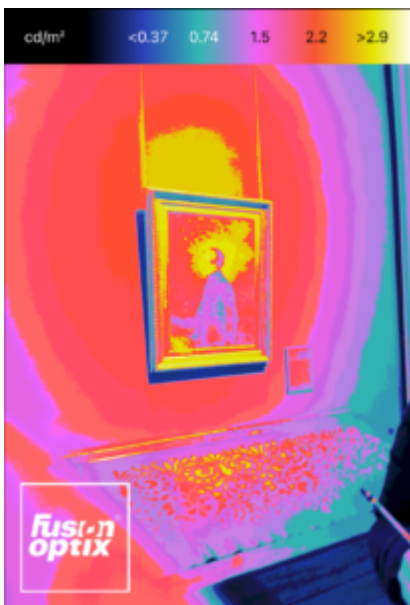
# Portrait Gallery/St James Visit

Week 5s first task was to measure the illuminance and luminance level in the portrait gallery. Our group chose two portraits in contrasting spaces to access the difference in illuminance and luminance levels.



(George Seton Portrait/Luminance Contrast – Image Credit Josie Lancaster)

This room was painted with a blue matte paint. Blue Wall luminance 1.58, Glass Surface Portrait luminance 3.21, Gallery illuminance 27.5 lux, Surface mounted track lighting providing lighting close to portrait measuring at 65.1 lux. Natural Light was minimal in this gallery preserving portraits. Darker space with track lighting on portraits made them stand out. These portraits have minimal light to preserve them.



( Portrait/Luminance Contrast – Image Credit Josie Lancaster)

Green room with matte paint. Green wall luminance 2.89, Portrait canvas luminance 10.15, Gallery illuminance 17.4 lux, Close to portrait 66.6 lux. This gallery had some natural light but the lux levels in the overall gallery were a lot lower than the blue room but the room was a lot brighter, this was partially due to natural light within this space. Higher luminance and illuminance levels closer to portraits and no glass on the portraits.



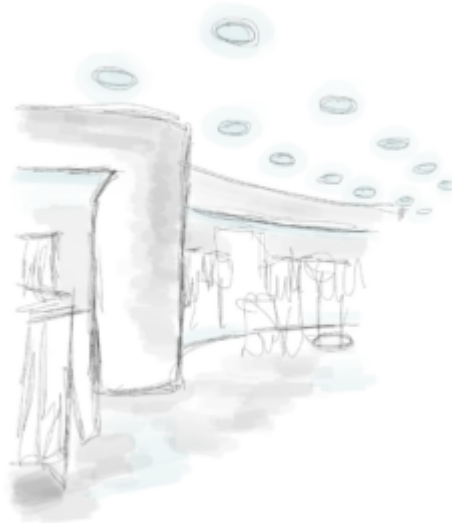
( Portrait Library/Library Lighting Sketch – Image Credit Josie Lancaster)

The library had no windows and no natural light within the space. Down lighting in the form of pendants, and recessed in shelving. Lighting was cool white in this space. Mini spotlights lighting objects in cabinets from specific angles with narrow beams. Space felt cold.



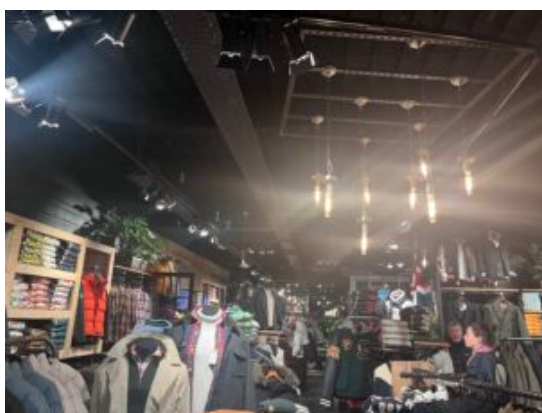
(Portrait Play Area/Lighting Sketch – Image Credit Josie Lancaster)

Natural light from windows, diffused with coverings. Track lighting on ceiling with warm directional light. Lighting highlighted material textures making the room feel warm.



(Zara/Lighting Sketch – Image Credit Josie Lancaster)

Cool blue lighting throughout store. Featured down lighting in curved spaces, spot lights on ceiling. Overall space is brightly lit but feels minimalistic. Products were all equally highlighted, no focus on specific products. Lighting temperature is intentional to create a bright minimalist feel to the space, making it feel light and airy. 3002 lux.



(Super Dry/Lighting Sketch – Image Credit Josie Lancaster)

Warm yellow lighting throughout store. Directional track

Spotlights, Tracks with pendants hanging lower to highlight specific areas. Bit overkill with the lights but space felt warm and cosy. Did not feel intentionally lit, although spotlights were purposely directed at mannequins which was intentional. Superdry sign was neon lit behind counter which is intentionally highlighting the brand which aligns with their products that are all highly branded. 826.1 lux.



(Lane 7/Lighting Sketch – Image Credit Josie Lancaster)

Warm light. Low pendant lights over tables creating intimate spaces. Spotlight purposefully pointing to service areas. Lots of depth, drama, shadows created within the space from the lighting creating multiple points of interest within the interior. 20.5 lux (general areas) 118 lux (at tables).