

# Los Angeles LGBT Center.

Over 50 years ago a group of Queer activists came together in aim of creating the “world” that “they’ve been waiting for”. Their original creation of “Liberation House” as a shelter house quickly grew into a much larger organisation as the need LGBT help and support in LA was becoming more and more evident. Now they as recognised as the Los Angeles LGBT center which is one of the largest of it’s kind in the world.

The aim of their centre is to ‘house, nourish, heal and celebrate our people’. Their centre is open to everyone, old and young, everyday of the year.

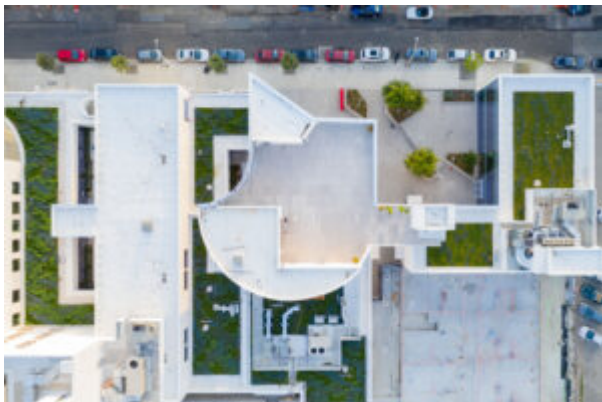
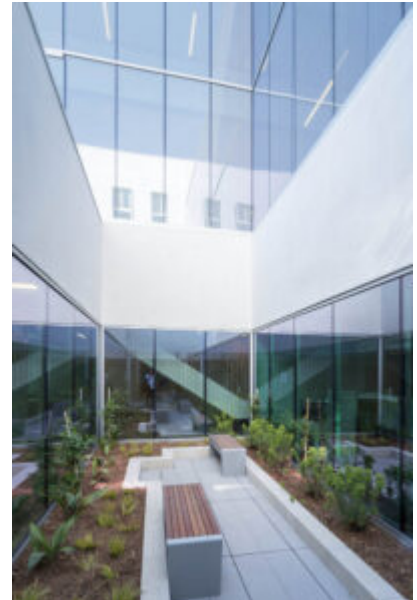
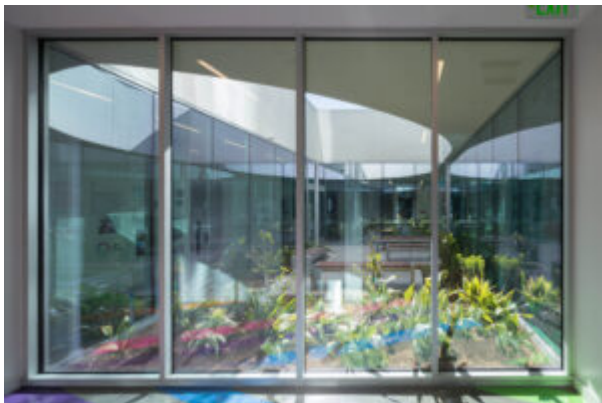
This is a large facility with over 800 employee offering services in a range of categories: Health, Social Services, Housing, Culture, Education, Leadership and Advocacy. There are also services specifically aimed at youth groups and the senior community. The need is clear for their project as the organisation supports over 500,000 people a year across its 10 locations in LA.

The specific site I am looking at is Anita May Rosenstein Campus, 6725 Santa Monica Blvd.



This building was completed in 2019, by Leong Leong and KFA Architects. It’s bold glass exterior is used to form a confident and open architectural symbol of Pride present in the Los Angeles greater community.

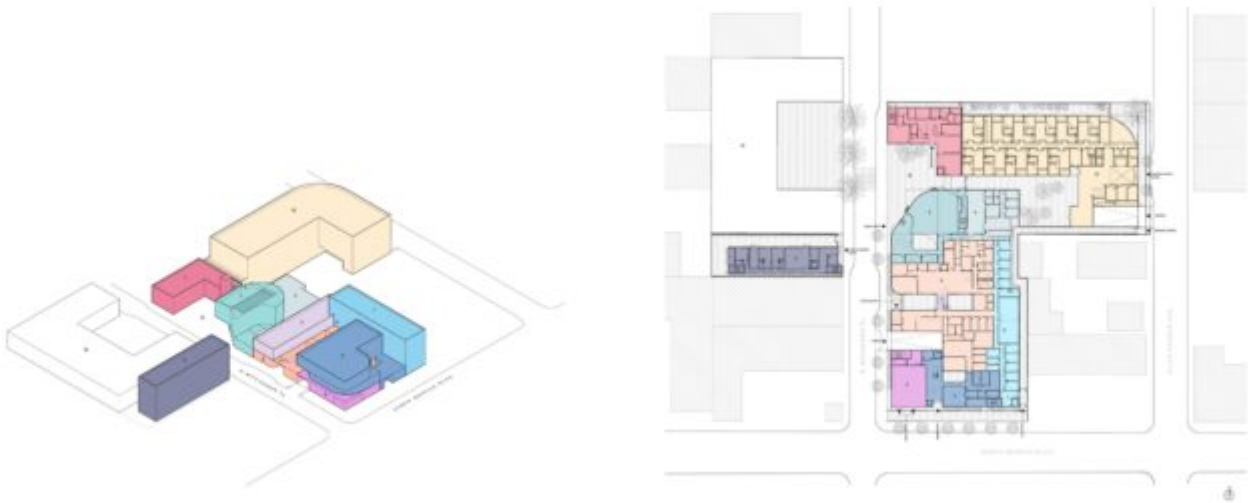
The programs within the building subtly linked through different interior courtyards and plazas. This gives a sense of separation, which is necessary in buildings that can offer sensitive services, but not total isolation which is a crucial from a community centre.



The site also includes community housing for the elderly as well as housing units for youth within the community, this is something the organisation has done from the being but never on this scale. There are 99 affordable housing units for the elderly and 25 supportive housing units for youth. This is a aspect/service I hadn't thought about before within my design but actually could be really well executed as my site 'Hotel Du Vin' already easily caters for rooms can could be used for housing in need people in the community.

The site is able to host 12 indivual departments while still

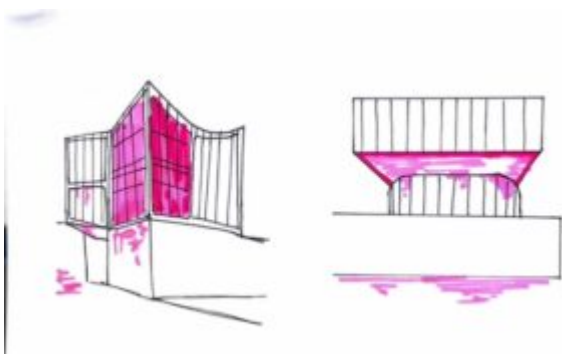
maintaining a collaborative feel, due to its huge size, 180,000 sq feet.



The masterplan includes 12 dedicated programs, each a distinct form that, together, comprise a multiplicity of identities spanning over 180,000 square feet (or over four acres).

Another aspect that I love within the building is there use of natural but also bold artificial lighting. The building using both these light sources to create shape and form. The interior artificial lights are recessed linear fixtures that really help to create a warm well lit environment.

Both the interior stairway and exterior strip lights have the ability to change colour creating a bold statement of a beacon of light. There are also area pole lights to ensure the feeling of a soft, safe and secure environment is still present.



Artificial Exterior Lighting Effect.



## Natural and Artificial Lighting



Light Wells to enhance Natural Lighting.

Overall I think this project/building is a really good case study in terms of both the services and then of the project but also the design elements that they have chosen to incorporate.

Sources:

<https://la-lgbtcenter.org>

<https://oculuslightstudio.com/projects/la-lgbt-center/>

<https://www.archdaily.com/917774/los-angeles-lgbt-center-anita-may-rosenstein-campus-leong-leong-plus-killefer-flammang-architects>

# Theme Collage

---

## Manifesto – Draft 2

### The Queer Culture Hub

Queer is an umbrella term used to generalise different labels and definitions. But what really is Queer Culture? It is dance, music, fashion, art, literature, sports, community, love, activism, and freedom. An open and accepting community with rich history, values, beliefs, and identities. A culture that has been formed out of exclusion and isolation.

Edinburgh being a city filled with multiple universities it is full of young people from a range of backgrounds, but it is also a busy city external from the universities. While the Queer Community is an active part of the city and includes people with all different ages, races, interests and hobbies there is a noticeable lack of a connected community. There is no centre. Despite the presence of various environments where queer individuals may feel accepted, many are still seeking a dedicated hub—a safe, welcoming venue where they can connect and engage with one another. How can we create a reserved space that allows for casual meetings, engages and inspires a

community, who often feel pushed out in other spaces?

It is import that this project also takes a responsibility in providing and facilitating health care for Queer people. With standard health care being targeted for the '*norm*' there is a huge lack in resources to care for the specific needs of the Queer Community and the niche problems that they face, in both physical and mental health. The project will offer a separate space for examinations, clinics and counselling.

The design aims create a gay village within a building in the centre of Edinburgh. A daytime haven to connect, explore, and enjoy. A space for groups, individuals, and speakers.

---

## Infographics Examples

---

### Manifesto – Draft 1.

The Queer Culture Hub

Queer is an umbrella term used to generalise different labels and definitions. But what really is Queer Culture? It is dance, music, fashion, art, literature, sports, community, love, activism, and freedom. An open and accepting community with rich history, values, beliefs, and identities. A culture that has been formed out of exclusion and isolation.

Edinburgh is a University City filled with young people from a range of backgrounds in need of an open social space for people to connect and live in their culture.

The design aims create a gay village within a building in the

centre of Edinburgh, place that Edinburgh is currently missing. A daytime haven to connect, explore, and enjoy. A space for groups, individuals, speaker.