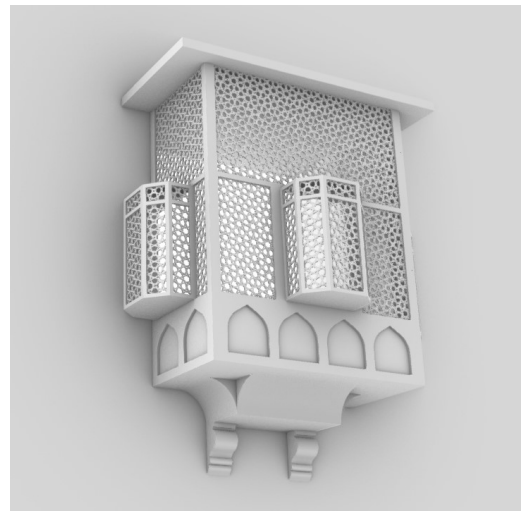
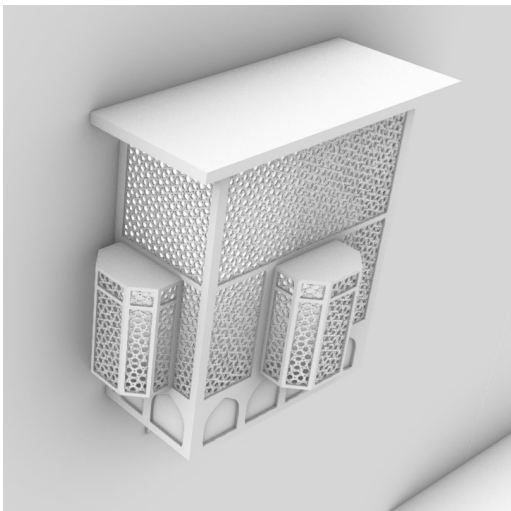
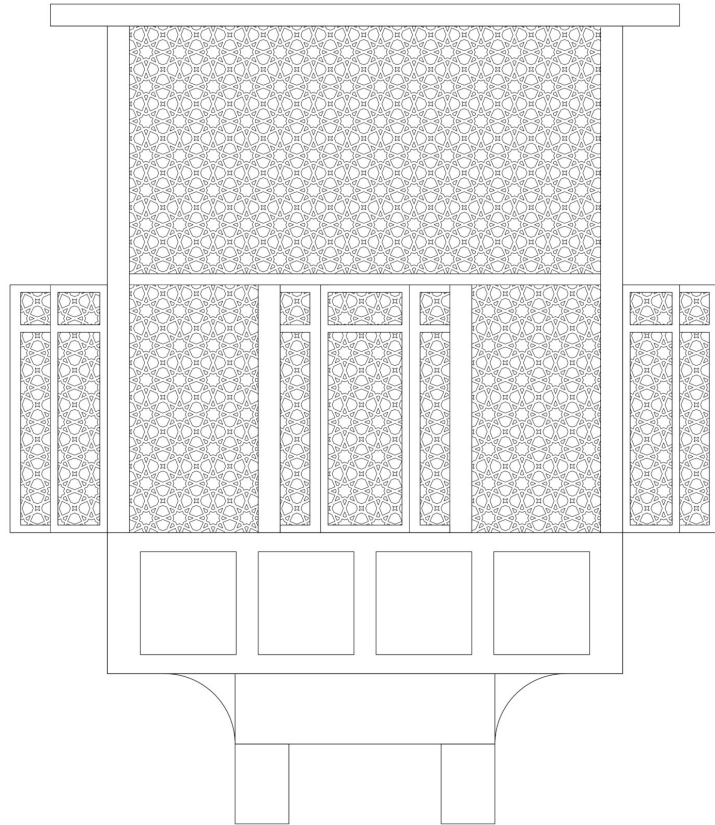
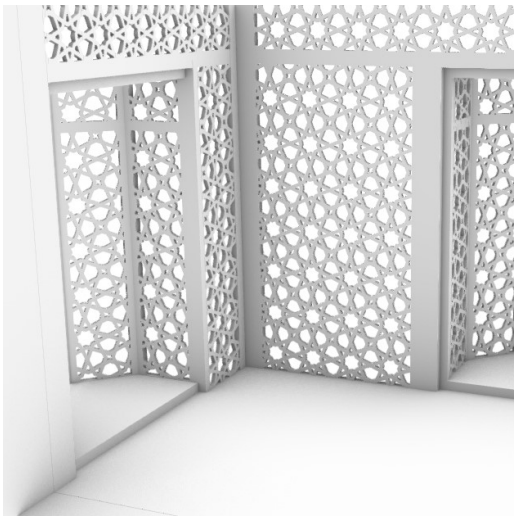
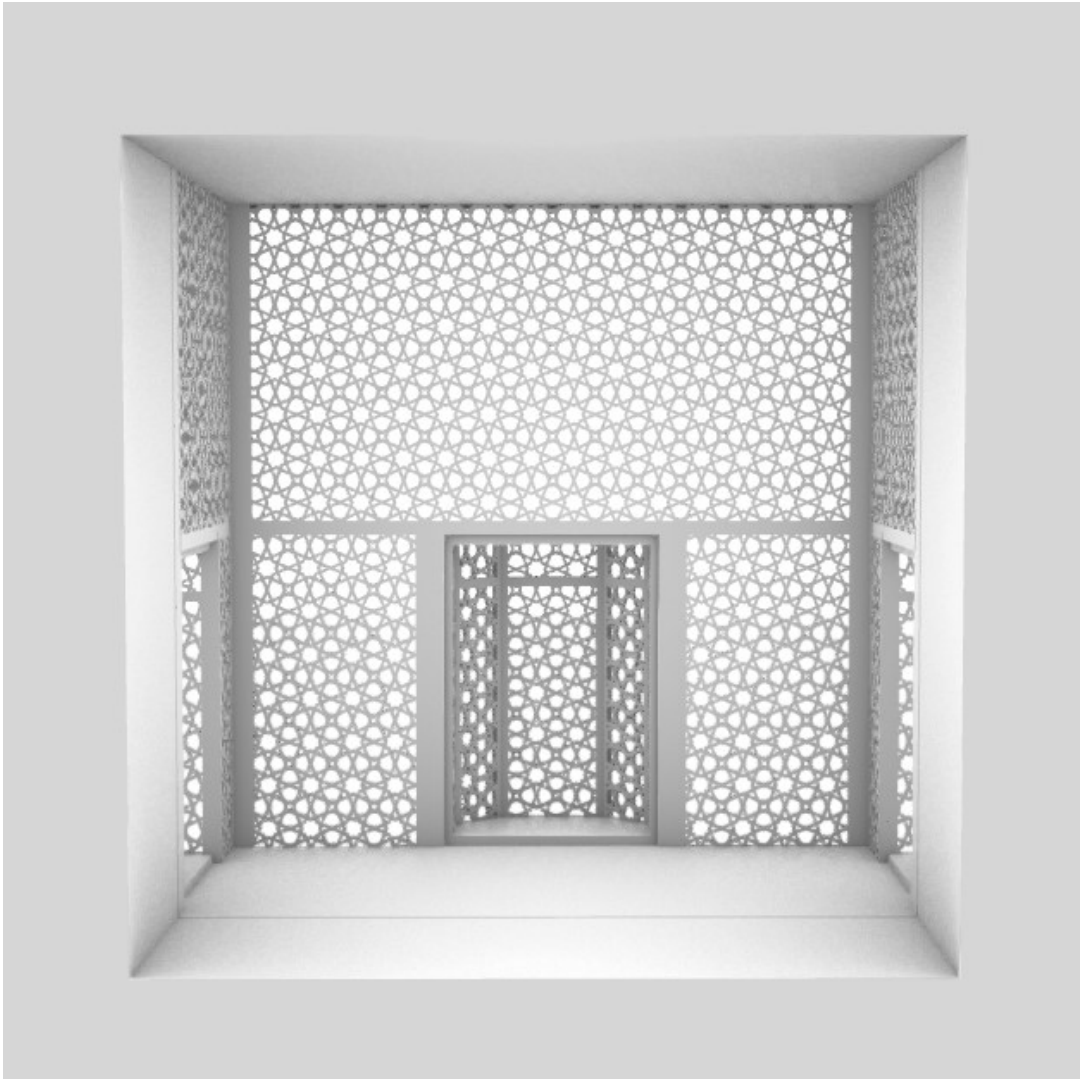
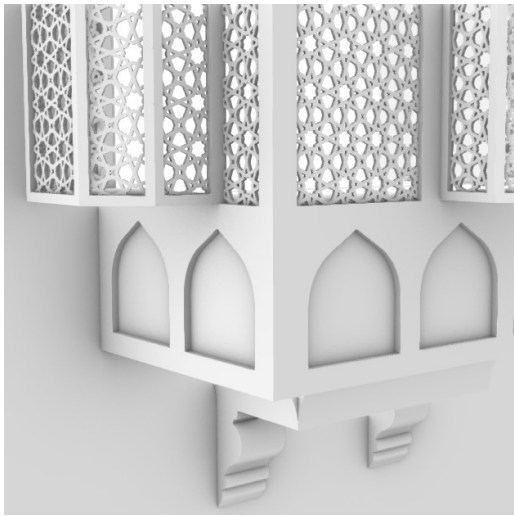
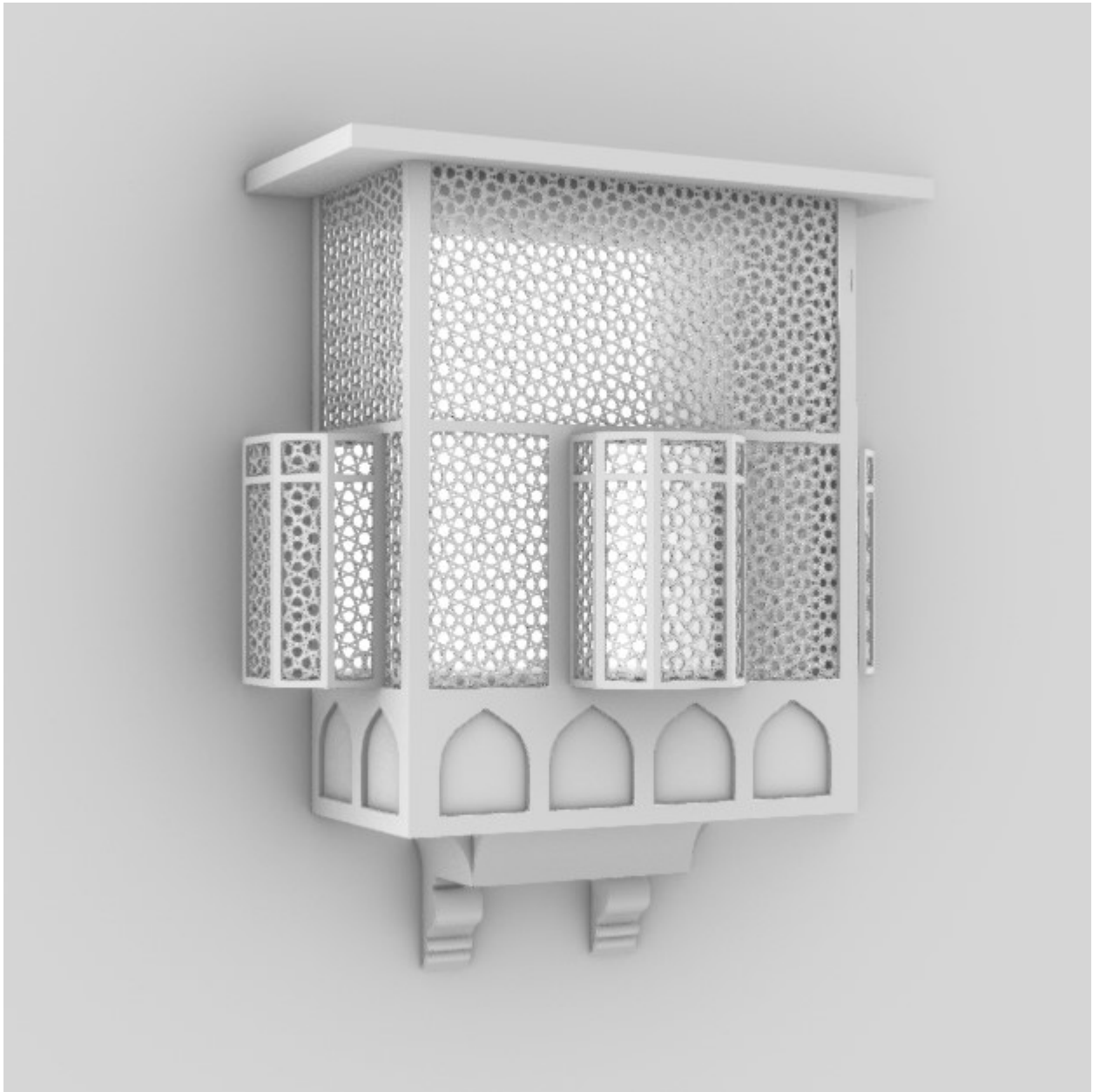
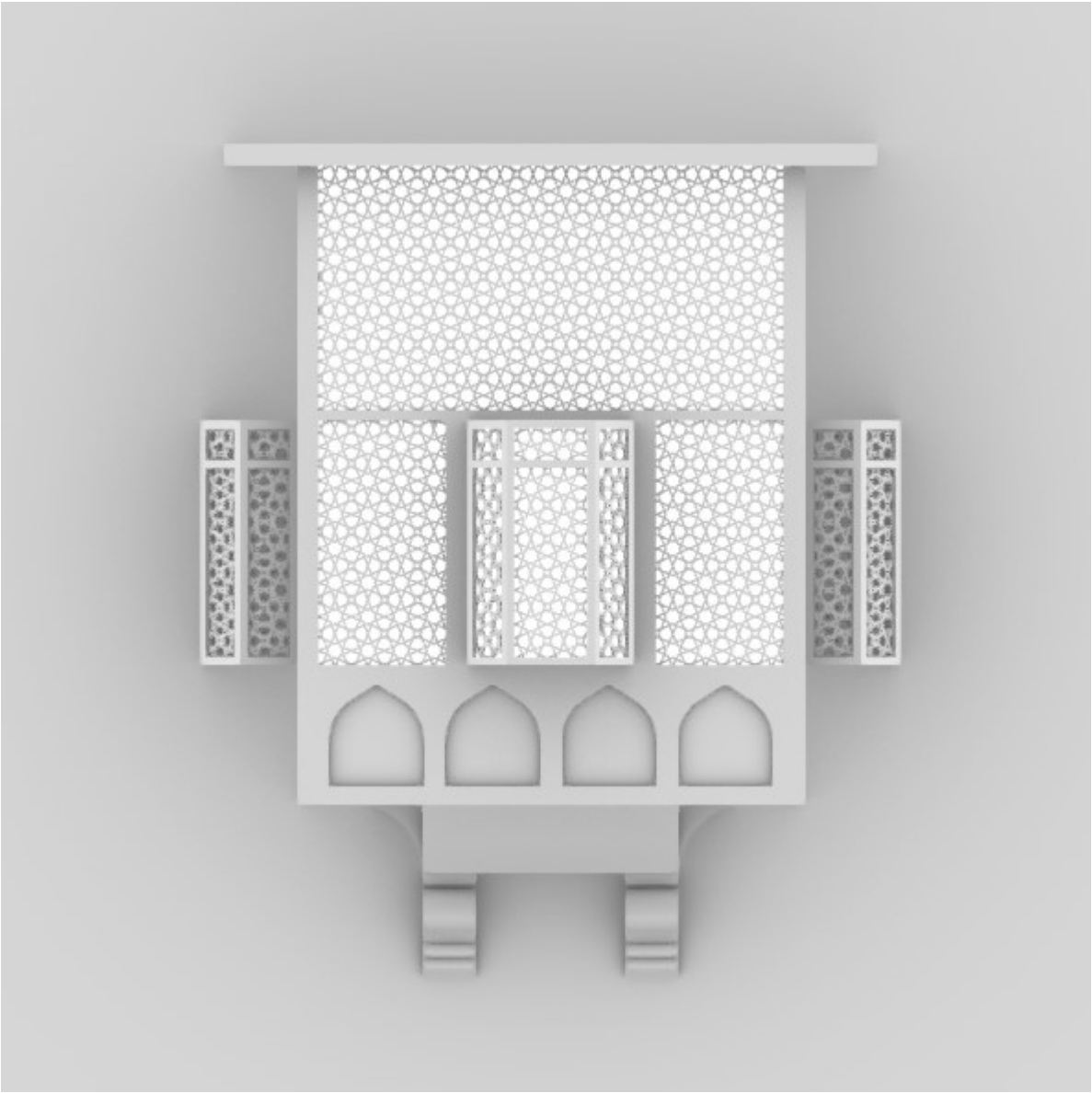
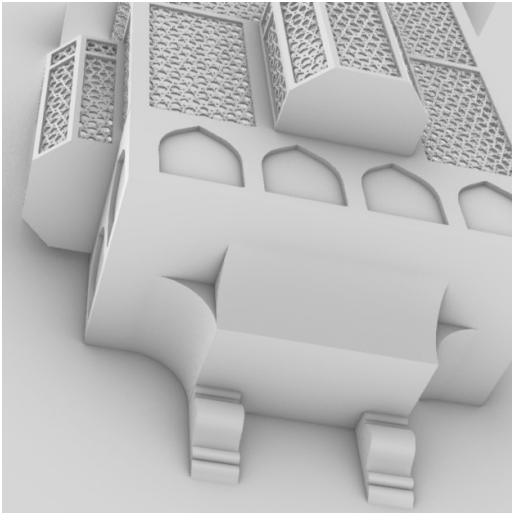


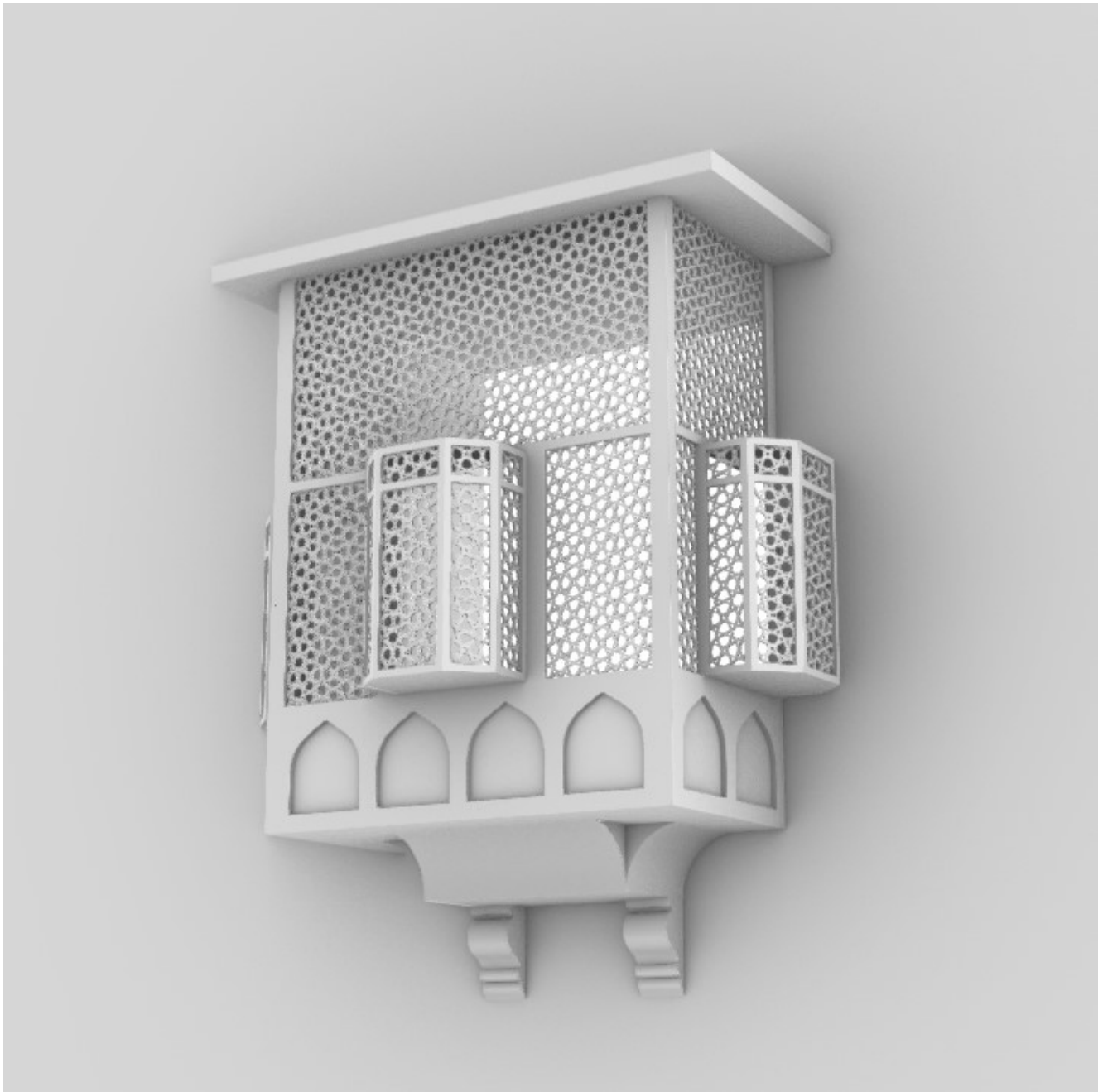
# ISLAMIC GEOMETRIC PATTERNS – MASHRABIYA MODEL











Following research on the role of a Mashrabiya within Arabic life, I wanted to design one for myself. This piece is an amalgamation of elements in its form and sizing from precedents found and researched online. The model itself wasn't too challenging to create, but the screening was particularly finicky to produce – requiring it to be re-drawn several times due to problems in extruding. In comparison to other examples, mine is relatively simple. That said, if it were completed in wood and traditionally fashioned in wood by craftsmen, it might present itself rather different entirely. In its final state, I really like how it turned out;

successfully featuring the main aspects of the mashrabiya, which I'd set out to do.

The geometric pattern featured in this piece is one I've used throughout this sub-project, and has been chosen for its open features, promoting air circulation.

Accompanying this model I've included a drawing, depicting the front-facing perspective.