

## Design process - design idea development

( Insertion/ persevere - leith motto )  
( Flexible - dynamic space )  
( Sustainability - material choice )  
(mental health - colour/ space arrangement/ material/ lighting/  
way- finding system)

1. Metal Industrial
2. Wood industrial
2. Food hall
3. Container

---

# BRIEF

---

[Street sport: The architects turning industrial buildings into radical centres for street sport and art | CLAD \(cladglobal.com\)](#)

– skate center

[Zap' Ados by Bang Architectes \(dezeen.com\)](#)

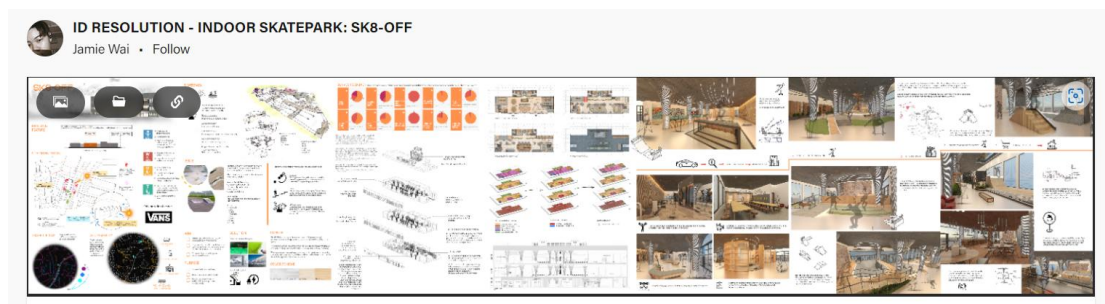
– Skate park

[Retail Experience is the Future, and It' s Here \(The Psychology of Retail Store Interior Design, Part 3\) \(fohlio.com\)](#)

– Retail ethos

## REFERENCE

[ID RESOLUTION – INDOOR SKATEPARK: SK8-OFF on Behance](#)



Cozy industrial style

---

29  
OCT



[10 stunning industrial cafe interiors - My Cosy Retreat](#)

## Inclusive design

[What is inclusive design? \(architecture.com\)](#) (LGBTQ community coffee shop, colour/ material/ spacial arrangement/ user type )

## Railway Arch Design

[Studiomama transforms Yotam Ottolenghi's test kitchen into "happy space" \(dezeen.com\)](#)

---



Vauxhall railway arch design  
[Restaurant in Railway Arch - Moreno Masey](#)

[ID:SR converts railway arches into offices for Monmouth Coffee \(dezeen.com\)](#)



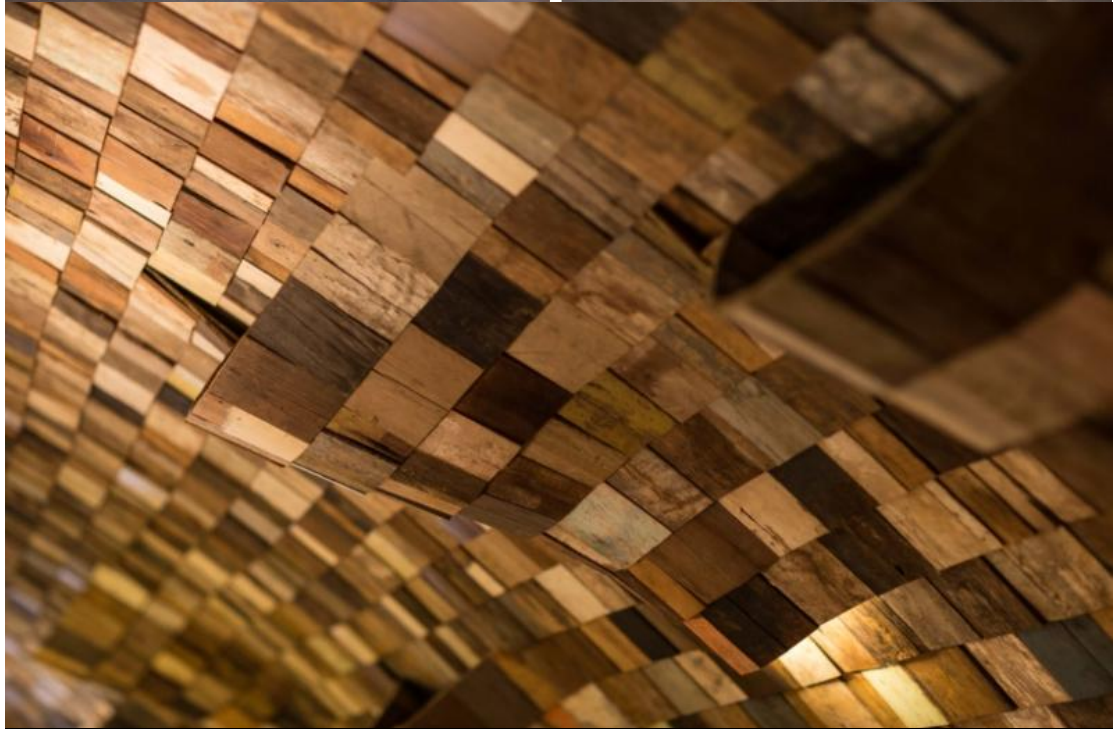




Activate Window



view gallery





[El Pastor | Wallpaper](#)

---



Metalic ceiling and concrete floor with fairy light

---

[OFMA Offices in a Vineyard / MAPAA | ArchDaily](#)



©

---

# Translucent Polycarbonate Facades

[How to Design and Install Seamless Translucent Polycarbonate Facades](#)





| [ArchDaily](#) ©

[Bangsaen SCG Library By DBALP | Wison Tungthunya & W Workspace \(wordpress.com\)](#)

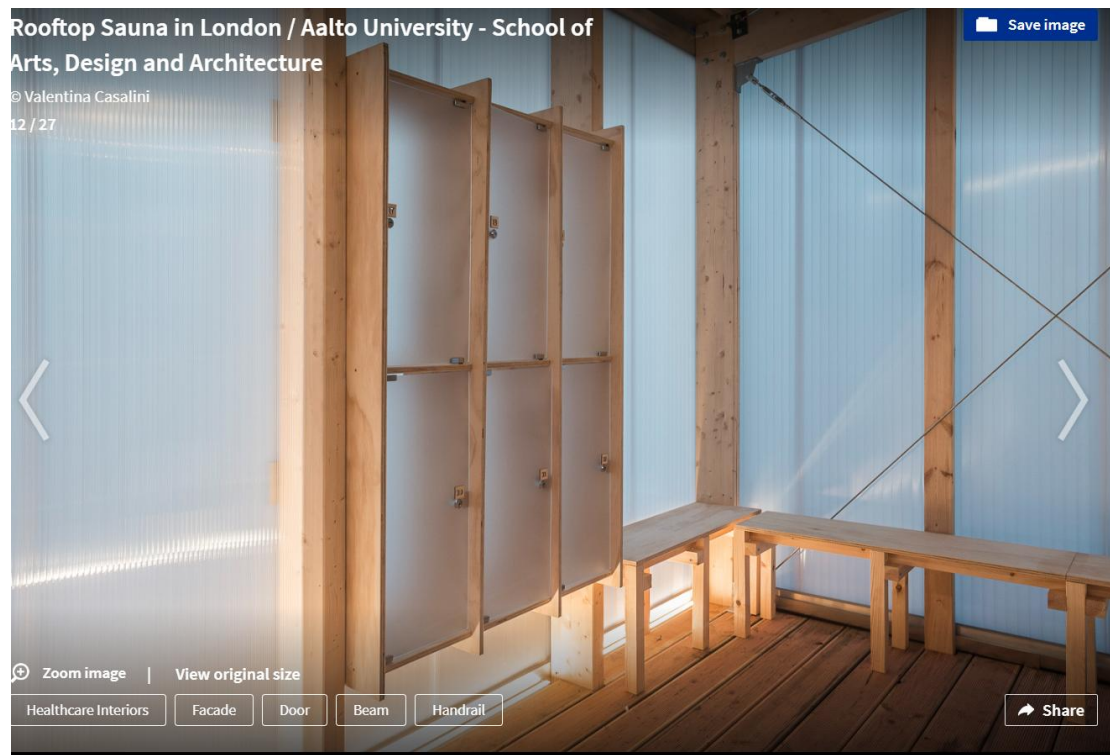


[studio mk27 - marcio kogon, Fernando Guerra / FG+SG • MiCasa Vol.C • Divisare](#)





Gallery of Rooftop Sauna in London / Aalto University - School of Arts, Design and Architecture - 3 (archdaily.com)



# Concrete Interior

[Eight brutalist Mexican home interiors proving concrete isn't always cold \(dezeen.com\)](#)

---

## **Eight brutalist Mexican interiors that prove concrete doesn't ha**



## **ve to feel cold**

[Gallery of ArchDaily Building of the Year 2020 Awards: The Finalists](#)  
[- 61](#)



[Ulupinar Textile Headquarters Showroom / Zemberek Design | ArchDaily](#)

[Christian Dada “废墟”主题专卖店 / Fumiko Takahama Architects | ArchDaily](#)



[RocketSpace Offices - London | Office Snapshots](#)  
Concrete Office



## PARKOUR Design

[The world's first 3D-printed parkour playground was made with recycled concrete! - Yanko Design](#)

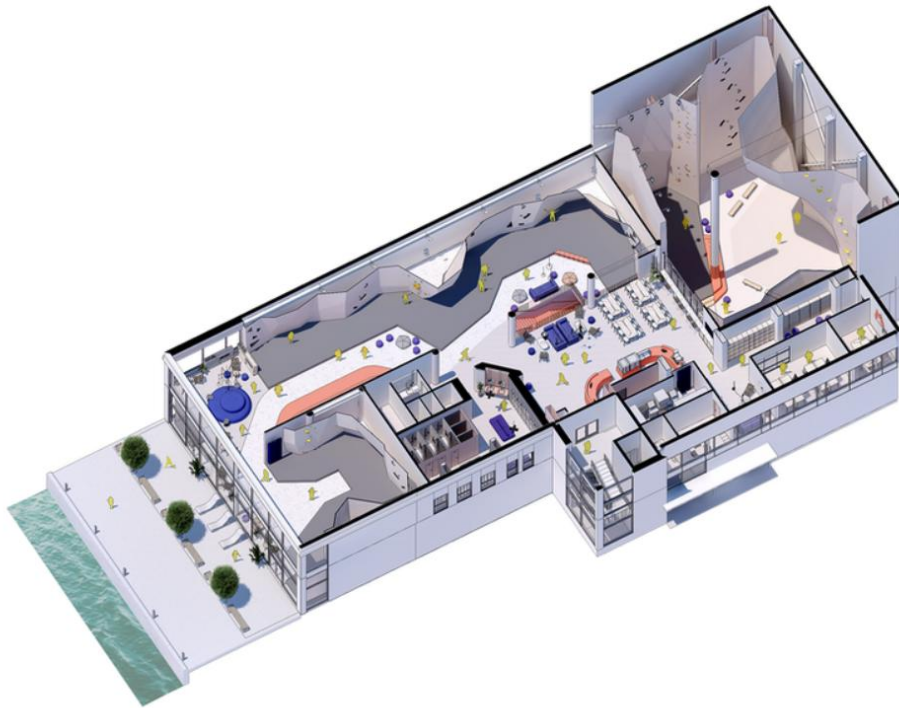
---



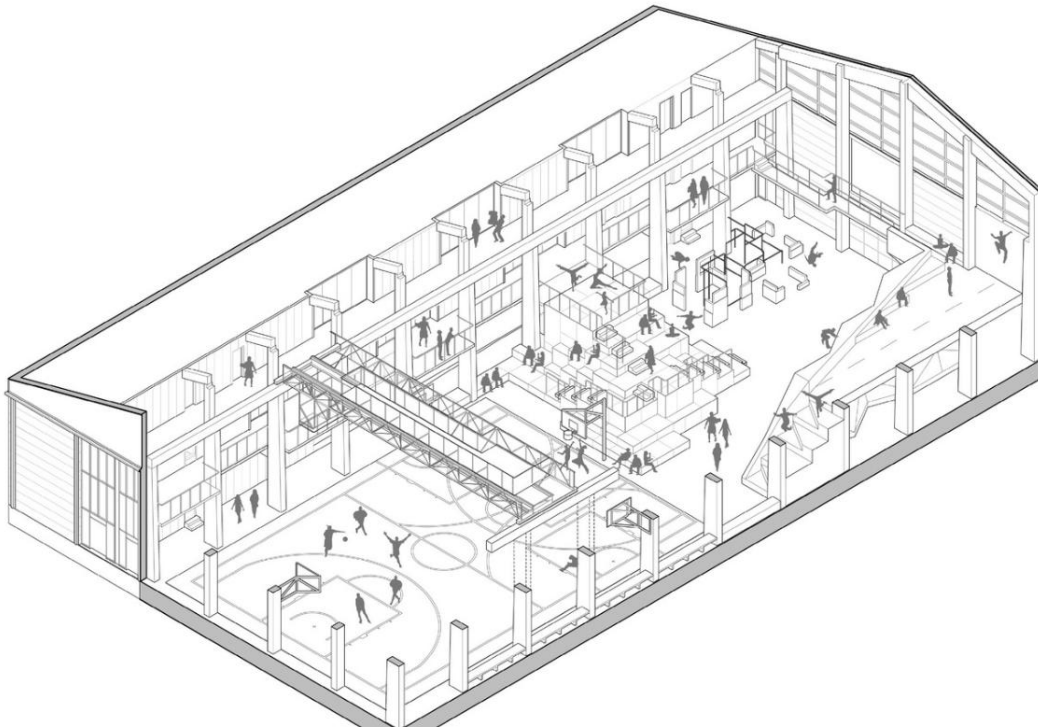
[3D Floor Plan Climbing Gym Molde | Moldeveggen Climbing Gym \(altlinestudio.com\)](https://altlinestudio.com)

[Concrete and oysters are on offer at Vancouver restaurant Shuckschuck \(thespaces.com\)](https://thespaces.com)

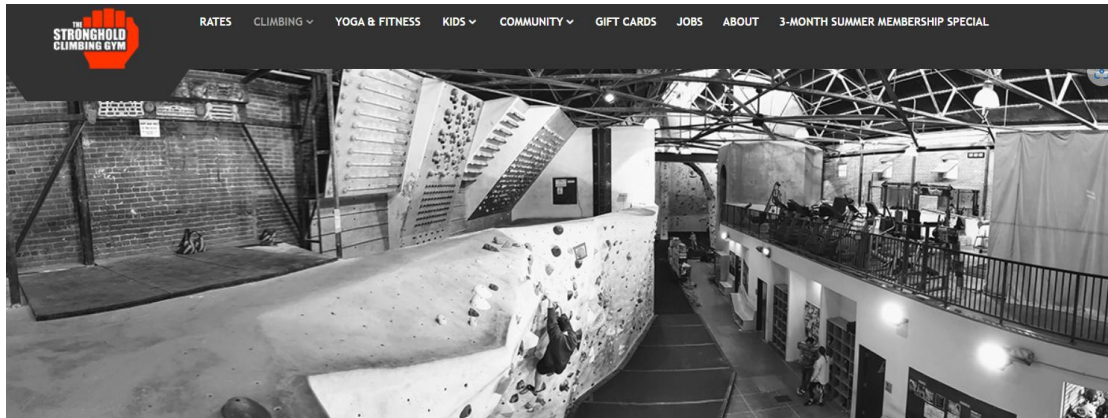




[Gallery of Game Streetmekka Aalborg / JAJA Architects - 45 \(archdaily.com\)](https://www.archdaily.com)







[The Stronghold Climbing Gym - Facility](#)  
[Bouldering Walls | Kong Climbing Ltd. \(climbingwall.co.uk\)](#)

---

# SKATEPARK DESIGN

## \*1 Skatepark research

[Teodor Thesis 2015 final.pdf \(theseus.fi\)](#)

[Bar 399 | Riorampdesign](#)





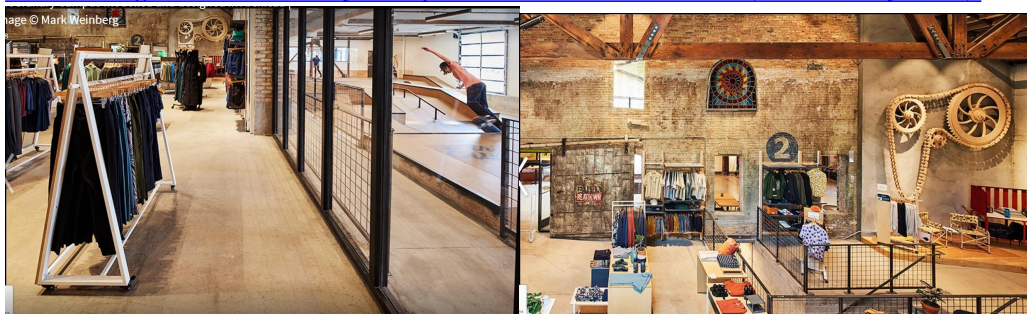
[2001. JOYPARK. RUMELANGE PHOTO ESSAY BY MAXIME DELVAUX • Divisare](#)  
[Latraac Skate Cafe \(trippin.world\)](#)  
[latraac - AIR FRESHENER](#)

LATRAAC IS A SOCIAL SKATEBOARDING VENUE BUILT INSIDE A 19TH CENTURY  
COURTYARD IN KERAMEIKOS, ATHENS.  
HIDDEN BEHIND AN INDUSTRIAL DOOR LIES AN URBAN GARDEN, A GARDEN SHED CAFE,  
AND AN OPEN AIR, PLYWOOD SKATEBOARD BOWL FITTED INSIDE THE COURTYARD  
WALLS.

THE LATRAAC BOWL IS OPEN ON THE GARDEN SIDE CREATING AN INTERACTION  
BETWEEN SKATEBOARDERS AND VIEWERS.  
SINCE ITS LAUNCH IN 2017, LATRAAC PROVIDES A UNIQUE ATHENS VENUE FOR THE  
SKATEBOARDING, MUSIC AND ARTS COMMUNITY.

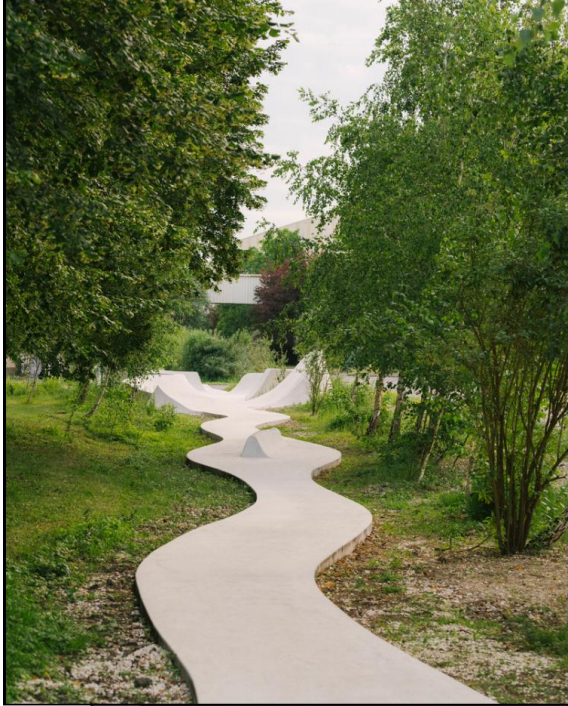


1. woodward park [Woodward Park City | Action Sports Hub - Indoor Facility](#) (Massive 3d model )
2. Primitive skatepark [Introducing | The Primitive Skatepark - YouTube](#) ( minimalist industrial , recessed led in staircase , clear design simple )
3. Moreprk design, use coloured concrete, indoor and out door, function and circulation [MOREPEK piazza skatepark, Shanghai by MOREPRK - 谷德设计网 \(gooood.cn\)](#)
4. Arch aid design **spacial relationship between skate and retail and accommodation/ also brick wall structure and retail design and a well written description can be used as reference** [Archicad BIM Design for Granary Campus from GRAPHISOFT \(archdaily.com\)](#)



- 
5. Skatepark Continua / MBL architectes + bureau David Apheceix - backyard nature skate park linear, river like -

have detail specification on ramp construction



[Skatepark Continua / MBL architectes + bureau David Apheceix | ArchDaily](#)



[Mind-bending Job to Shape Exposed Shotcrete Structure of Gilder's Curvy 'Canyon' | Engineering News-Record \(enr.com\)](#)



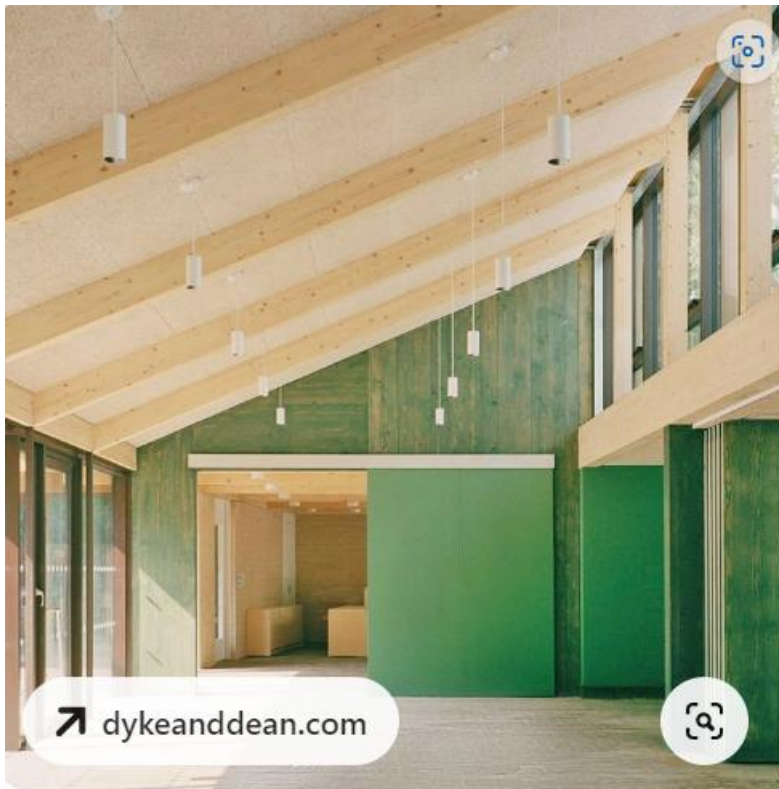
[Rather Korso by DTP « Landscape Architecture Platform | Landezine](#)



[Zap' Ados by Bang Architectes \(dezeen.com\)](#)

---

[Pinterest](#)



# Postmodernism

( can find inspiration from other place -  
painting / film /photos/Fashion and so on )

motto less is bore,break the tradition, use of colour/ shape /  
abstraction( Weird and absurd but sincere and attitude )

- Freedom of expression
- Bring emotion to architecture
- Using reference
- Personality of the building
- People's identity

**Add Case study** : Post modernism architect and analyze.

**Add Case study** : Post modernism interior and analyze

(Tv am studios, Hawley Cresce, NT,london 1951-83)

(Judge business school, Cambridge, - John Outram)

*First, in the 1960s it started as an architecture movement, later in the 1970s, Postmodernism started as an interior design movement. This style lasted until the 1990s. At the bare beginning, this art movement was mainly rejected and mocked by artists from this time period. It was considered ridiculous at the beginning, but later on, mostly in the 90s, this art movement had boomed. After the 90s, many people consider that this art movement had largely gone out of fashion,*

[Postmodernism Furniture Design: Its Influences, Inspirations, and Characteristics - Affordable Modern Design Furniture and Furnishings // Moderno House](#)

## - Post modernism furniture

Extravagant and Bright Color Palette

Combination of Shapes

Contradiction

Form Doesn't Necessarily Follow Function

**- popular group and artwork**

The Memphis Group 1980-1987 ( Italian design architecture group found by Ettore Sottsass)- post modern furniture, lighting , fabric and so on )

Alessandro Mendini

[Postmodernism Furniture Design: Its Influences, Inspirations, and Characteristics - Affordable Modern Design Furniture and Furnishings // Moderno House](#)

**- Related artist**

---

## Park design

[Skateboard](#)

[GB](#)

### Design and Development Guidance for Skateboarding



[energetic orange adorns the zuzeum art center in riga, designed by annvil](#)



[designboom.com](https://www.designboom.com)



## Aldo van Eyck's Playgrounds - Minimalist playground design in Amsterdam

Over the last decades, these playgrounds have been studied by sociologists, theorists of art and architecture, and psychologists. Adopting an ecological approach to the human environment, it is argued that the **abstract forms of van Eyck's play sculptures indeed stimulate the creativity of the child**. Whereas a slide or a swing almost dictates what a child is supposed to do, van Eyck's play equipment invites the child to actively explore the numerous affordances (action possibilities) it provided.

Yet **despite the positive effects on the aesthetics, the symmetrical patterns of van Eyck's play sculptures are likely to have negative effects on the attractiveness of the sculpture as a play element**.

In fact, messy structures with a fair amount of variation in heights and distances afford children to cross over different gaps. And such an affordance might be an indispensable ingredient of genuine play. [Frontiers | Aldo van Eyck's Playgrounds: Aesthetics, Affordances, and Creativity \(frontiersin.org\)](https://www.frontiersin.org/articles/10.3389/fpsyg.2019.01611/full)

( Minimalism and abstract shape and layout help with creativity and enjoyment)

# Landscape for Play is a huge colourful playground in Madrid

shapes, surface relationship, boundary, composition, territory, graphic language and threshold.

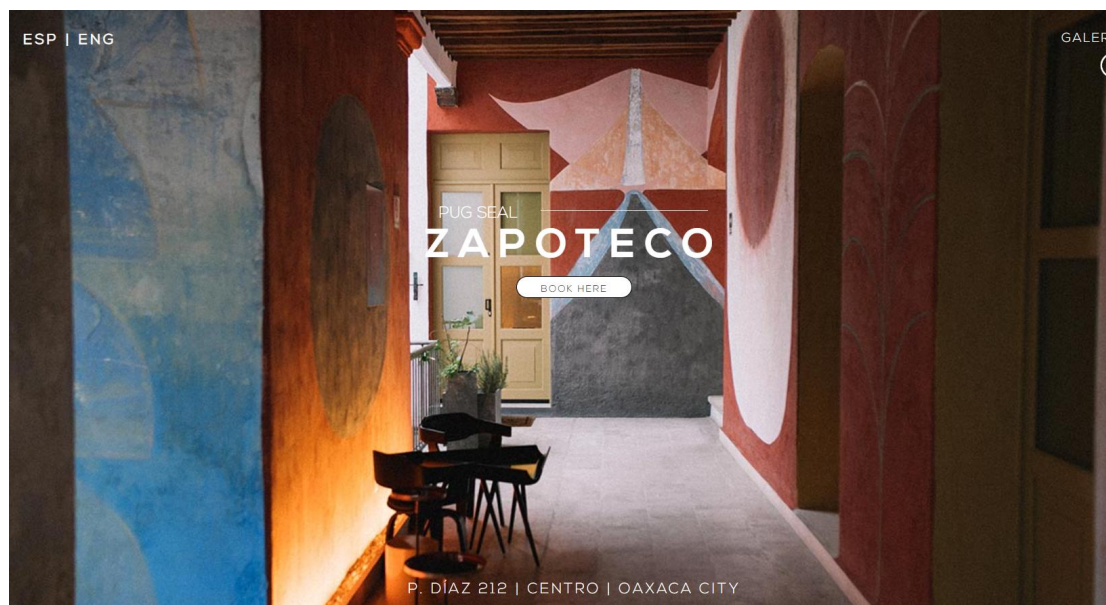
"Colourful graphics decorate the forms, offering a striking contrast with the industrial architecture of the old slaughterhouse building. The colour palette, with its bold shades of red, yellow, green, blue and black, references postwar graphic design.

We shortlisted over 100 colours before creating colour samples which we mixed and matched before settling on the final combinations

[PUG SEAL - Zapoteco - Boutique Luxury Hotel Oaxaca City](#)

[Art Collection Zapoteco - Pug Seal Blog](#)

Use artwork as wall mural



**2015, Kriss  
Kyle's Kaleidoscope**

Normally when you think BMX, you think of dusty dirt jumps and small, confined skateparks. It's not something you tend to associate with moody lighting, techy cinematography, movie sound stages, cleverly constructed mechanical sets and Hollywood-type directors.

Released back in 2015, [Kriss Kyle's Kaleidoscope](#) rethought that notion. Teaming up with esteemed set designer and first-time director Ben Scott of Ridley Scott Associates, the Scottish biker's Kaleidoscope project was seen as a game-changer for bike videos. It saw Kyle perform a number of world-first BMX tricks on moving obstacles in an ever-changing environment. Not everything is quite what it seems in Kaleidoscope

[Best BMX films: Top 17 documentaries & more to watch \(redbull.com\)](#)

---

## Colour Pattern design

### yinka ilori adds punchy pops of color to skatepark sited within a cultural institution in france

[Designer Yinka Ilori - New Colorama Skate Park in France \(elledecor.com\)](#) - [Interview](#) (Design inspiration for using colors and patterns. / also interview format)

How did you choose your palette?

**YI:** **The building's facade** has some amazing glazed brickwork—green, orange, and red. I wanted to bring an element of that inside the park, so it felt like there was some kind of connection.

Where did your love of bright and bold colors come from?

**YI:** It came from seeing my Nigerian mother and father wear so much color. It was incredible. People gave my parents respect for wearing bold hues, which, in turn, gave them pride.

The pandemic is definitely going to change the way we play in general.

I learned about different cultures and about many races, religions, and perspectives. It made me understand the power of community. It's the most beautiful place I know.

[vinka ilori adds punchy pops of color to an indoor skatepark in france \(designboom.com\)](#) – case study

the design and arrangement of the obstacles were made using FSC certified recycled paper from [skatelite](#), and the project was developed with the support of [decathlon](#). beyond a skate spot, 'colorama' intends to become a space for community engagement, and a mediation tool in support of the area's youth.

( Personal analyzatio - light colour on the top surface)  
\_ Case study need analyze)

## Camille Walala revives east London high street with community-funded artwork

"Art and colour have an amazing power to spread positivity, especially at the scale of the street. It's wonderful to have an opportunity to have such a significant impact on the look and feel of an entire neighbourhood."

"We believe art and culture is a great way to engage the community and brighten up public space, instil a sense of civic pride and also attract more people to the area and increase footfall,

[Camille Walala revives Leyton high street with Walala Parade \(dezeen.com\)](#)

## With bold colours and characters, Martcellia Liunic's works are "the right combination of cute and trippy"

( use her drawing for inspiration of the colour and shapes)

colourful, playful, sometimes abstract raw shapes and animals with girl characters.” Illustration, in particular, is a medium which has always been “personal and therapeutic” for Martcellia

With bold colours and characters, Martcellia Liunic’ s works are “the right combination of cute and trippy” (itsnicethat.com)

*(\* Line stroke experinment your self and develop a sketch book ! and add in the photo you took around edinburgh, and patterns in the sketch book ! after that can also use air dry clay to make small model version \* )*

- Collective pattern and colour designs can use as reference!

Cory Uehara | Dribbble

Can use its model but make small changes

#brickwallmural on Instagram | Hashtags



## Bar Design

# Pllek: One epic Bar and Restaurant in Amsterdam

Design inspiration : Located inside a warehouse by the river. The main hall if may design focus. This space is divided into 5seperate space, the bar located at the ned of ground floor, cross the building from one end to another, there are 3 platforms on both side and on the end of the space which is above the bar. Two platform on the side are supported by the metal beams, and they provide more private seating. The kitchen is located on the left hand side of the building in the middle.In the middle of the space there's public seating combination, from sofa seating to bench to smaller dinning tables.The over all layout promote interaction and establish an public and intimate environment. The placement of the furniture were right next to each other, on purpose. To shorten the space between people and provide opportunities for conversation and interaction. The seating on the side or on the platform are comparatively more private, which also accommodates people's needs. Some pople might come around as individual group and so on.

What change I want to make. I do wish to have a platform for private seating and ground floor for public seating, I want to combine the movie and bar and the restaurant all together, and I want to add a pathway for skateboarders and bmxers to go through the building without stopping to cross over. They can directly travel on the main street and continue their ride or skate to the back of the building

[Pllek: One epic Bar and Restaurant in Amsterdam - Hand Luggage Only](#)

## Movie Bar design

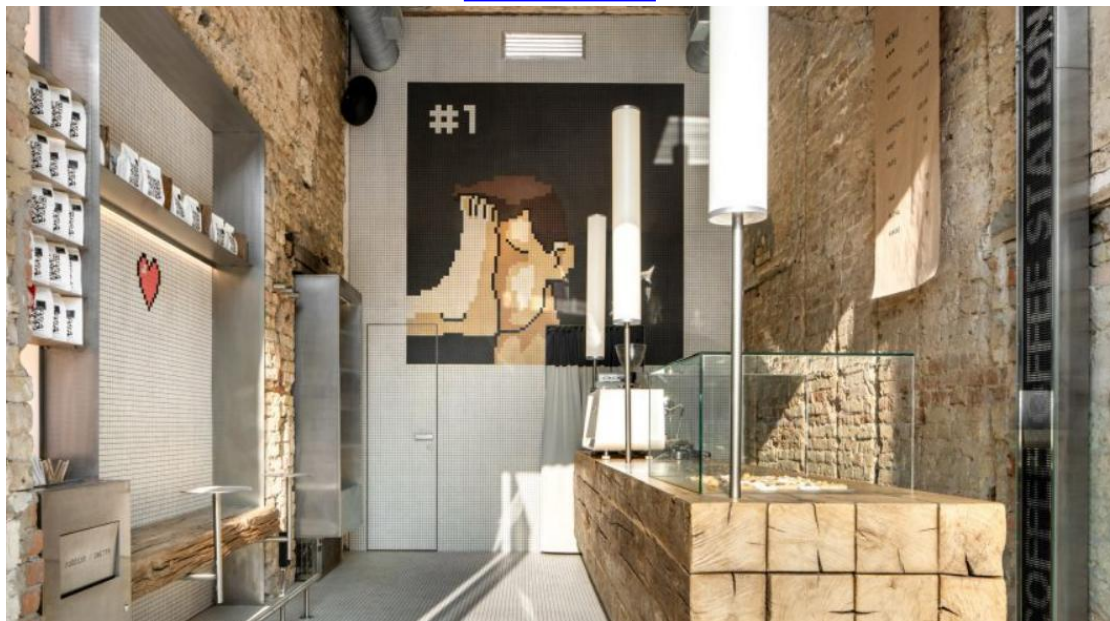
### Sala Equis - Madrid

In the 1980s, the Alba cinema became an X-rated cinema, or a 'sala x', and it was one of the few that were still open in Madrid. .The space was remodelled and redecorated with exquisite taste, and it's got a terrace at the front; the Plaza room, which is the epicentre and features a large movie screen, a bar where you can get a bite to eat, and a play area with wooden benches, lounge chairs and even swings; and of course there's a cinema room with 55 seats for celluloid fans to catch a flick during their film cycles.

Design inspiration : 6000\*4000 film screen on top of the bar is supported by the metal frame structure. , The overall layout of the space are divided clearly, public wooden seating installation on the right hand side, theres a wee platform on the left with bench on top, and it creates a diversity between layers, floor levels. Open area in the middle occupied with individual furniture combo, unique choice of furniture help with establishing an relaxing atmosphere, casual and playful. There is a terrace on top which was used for upper floor seating back when the cinema was open, it creates diversity between floor level and break the space. Appliance of vintage decoration on the wall and cinema element and modern frame and exposed pipe creates a unique diverse interior environment, the choice of colour sets a warm tone of the space.

[Sala Equis | Things to do in Madrid, Madrid \(timeout.com\)](#)

[YOD Group installs pixel-like mosaics inside Kyiv coffee bar \(dezeen.com\)](#)



## Bike Shed in London

Design inspiration : The overall design style is industrial which suits the theme and the building itself. I can adapt industrial in my building as well since its for street culture and it echos with surrounding building type and the original design style. Bike shed in London is located in several railway arch which is similar to my building type. On top of that, it accommodates various function for the target users, except retail, restaurant, outdoor seating, they also have tattoo shop, barber shop, parking lot. For the outdoor seating area, it is also used as an entrance for bikes towards the parking area. People can drink coffee and observe the bikes coming thru, which adds interaction to the space and make it more engaging. I want to reconsider my function of the space, whether it is a youth center or it is a social space. Cause in street culture in Edinburgh, people are involved in tattoo culture, music culture, broadcast and art and workshop and so on.

[Bike Shed Motorcycle Club | Dining, Barbers & Motorcycle Clothing](#)

- Kitchen Design -

## Guidelines :

### [Quick Tips for A More Efficient Restaurant Kitchen Layout - AnytimeStaff \(anytimechefs.com.au\)](#)

- Food Prep area: counter space, cutting tools, and storage containers.
  - Washing areas: ideally, one for food and another for dishes to avoid food contamination.
  - Storage area: space for storing utensils and other cooking tools, food ingredients and place settings.
  - Cooking area: space for cooking appliances and a kitchen display system for BOH staff to keep up with incoming tickets.
  - Service area: space for plating dishes and handing them off to servers to deliver to diners.
- An example is the designation of the delivery receiving area, which should be situated near your storage. The storage should be situated next to your preparation area, which is located near your cooking area. Your cooking area should be located near your plating area which is next to your servery...and so on. Having your chillers near the receiving area to ensure less time is lost when moving temperature-sensitive ingredients. Another is ensuring that the storage for cleaning chemicals is situated away from where food preparation is done. Another great example is ensuring that your food prep for raw materials is separate from cooked areas. You want to avoid food contamination and you need to make it easy for your staff to do it.

---

## - Lift Design -

### [Clarity Enclosed Platform Lift - Ascension Wheelchair Lifts \(ascension-lift.com\)](#) - retail lift design ( A 14' enclosed wheelchair lift for indoor and outdoor locations)



## An ADA compliant, visually striking wheelchair lift for narrow spaces

Ideal for locations where space is tight, an uncluttered feeling is essential, and top quality is a must. The Ascension Clarity enclosed wheelchair lift can reach heights up to 14 feet and needs only 4 feet of clearance for installation on the existing floor. With such a small footprint and ultra-thin platform floor, the Clarity requires no access ramp or installation pit.



## Clarity

Elegant Narrow Profile

**34" - 168"**

Vertical Travel

**750 lbs.**

Max Capacity

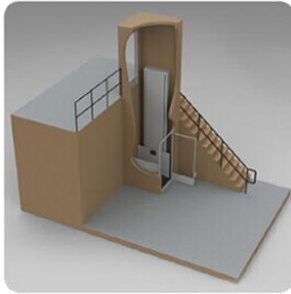
**48"W x 68"L**

Footprint

Vertical Travel: 34" to 168"

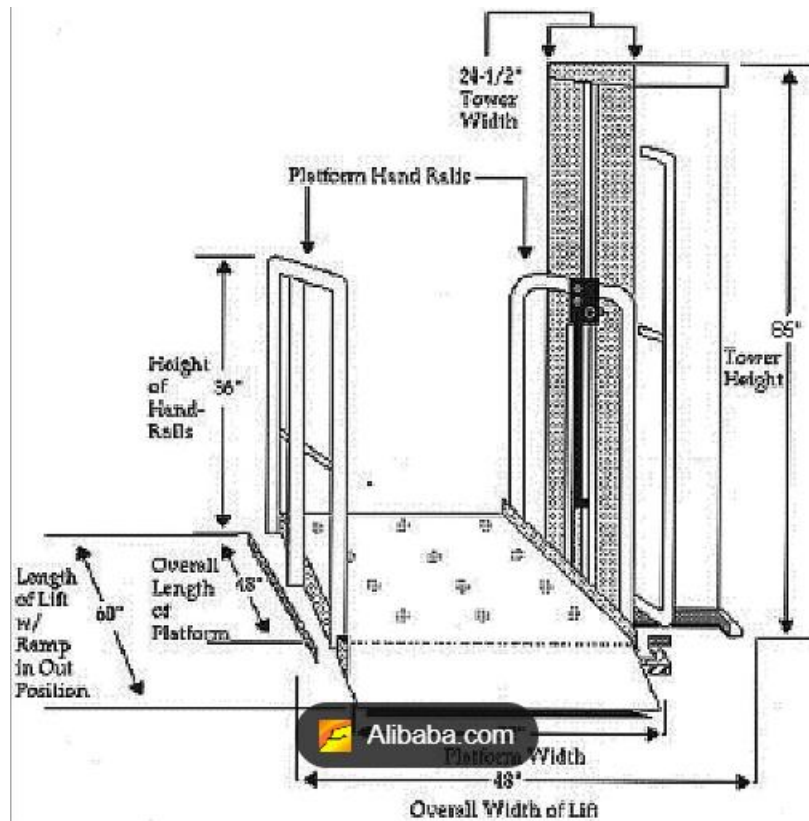
Capacity: 750 lbs

Lift Footprint: 48" W x 68" L



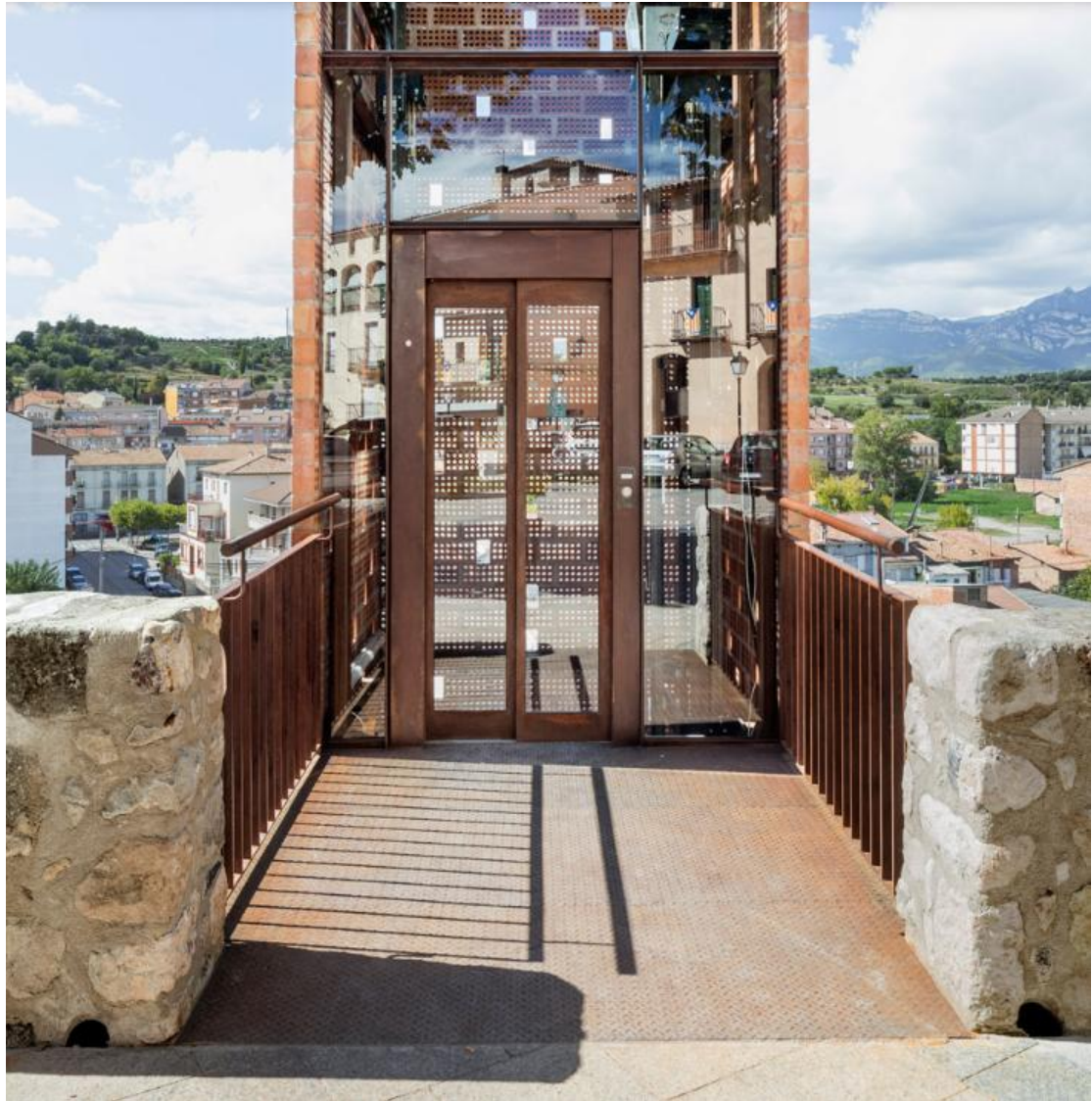
[wheelchair](#)

[enclosed platform lift on plan - Bing images](#)



[Clarity Enclosed Platform Lift - Ascension Wheelchair Lifts \(ascension-lift.com\)](http://ascension-lift.com)

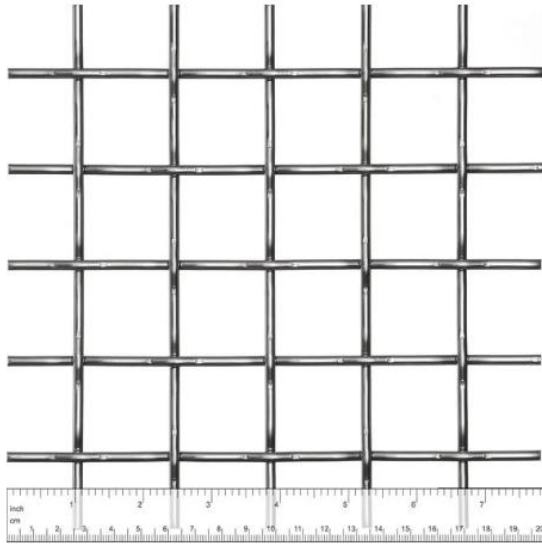
[Perforated brick elevator connects medieval town to riverside \(dezeen.com\)](http://dezeen.com)



[Elevator of Museo Gustavo de Maeztu / Dirección general de cultura, Gobierno de Navarra | ArchDaily](#)



[Special mesh for architecture | Haver & Boecker  
\(haverboecker.com\)](http://haverboecker.com)



### Technical data

**Weight:** ~ 5.9 kg/m<sup>2</sup>


**Open area:** ~ 79%

**Main applications:** Facade, parapet

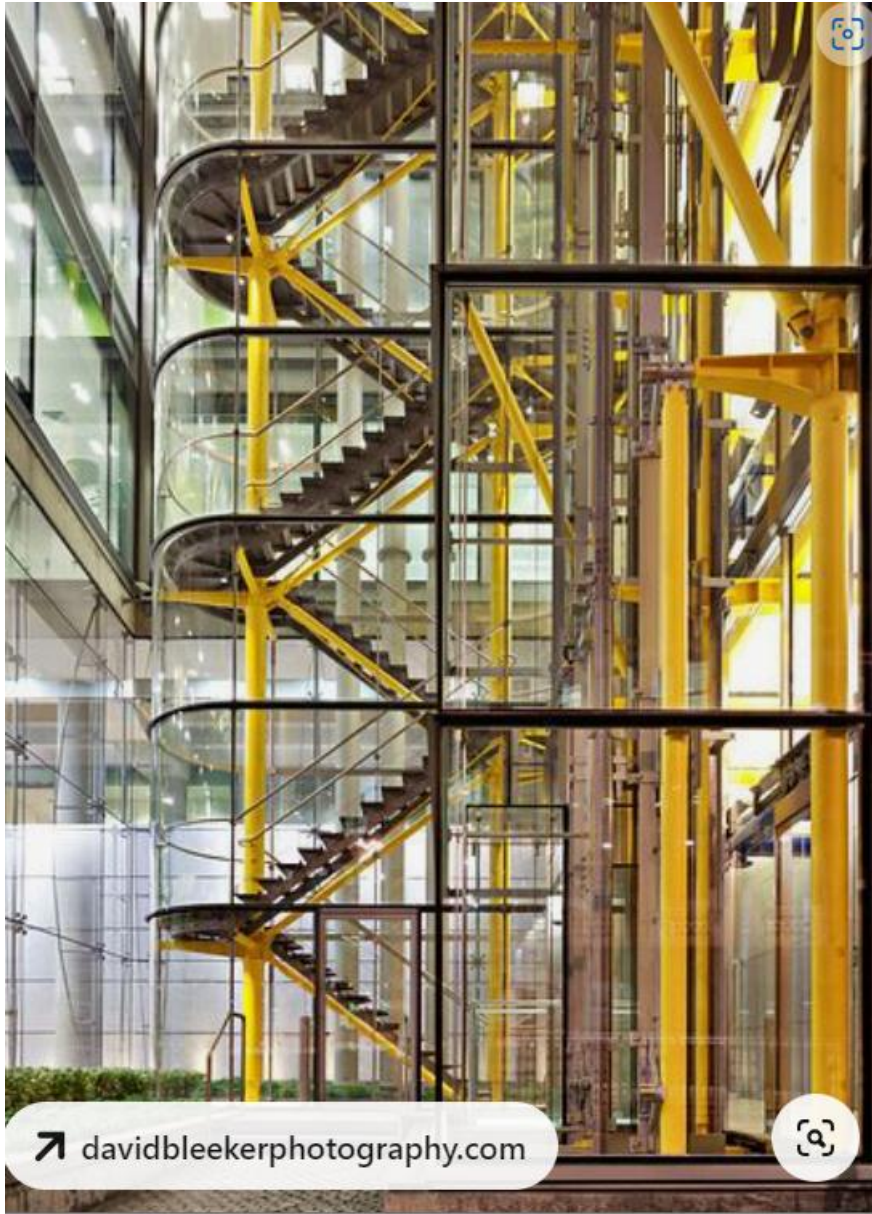
### Characteristics:

- An homogeneous appearance thanks to square meshes
  - A very robust metal mesh with high transparency
  - Popular as railing or parapet infill
  - Optionally, the wire mesh fabric can be made "movable" so that the course of the mesh adapts to the gradient of the stairs.
-



 [weavingarchitecture.com](https://weavingarchitecture.com)







# Retail

[studio mutt designs vibrant store for universal works in coal drops yard, london \(designboom.com\)](http://designboom.com)





Mirror, wood exhibition stall, brick wall, green metal clothes shelf system

[Hé Architectuur, Tim Van de Velde • Karper House • Divisare](#)  
Wooden interior



# *FURNITURE*

[Industrial Long Bar Height Table Set for 6 Wooden 7 Piece Breakfast Table and Bar Stools-Homary](#)



Abstract seating design



[» Let' s Sit and Talk by Marie Khouri at Equinox Gallery, Vancouver - Canada \(retaildesignblog.net\)](#)

[Concrete and oysters are on offer at Vancouver restaurant Shuckschuck \(thespaces.com\)](#)

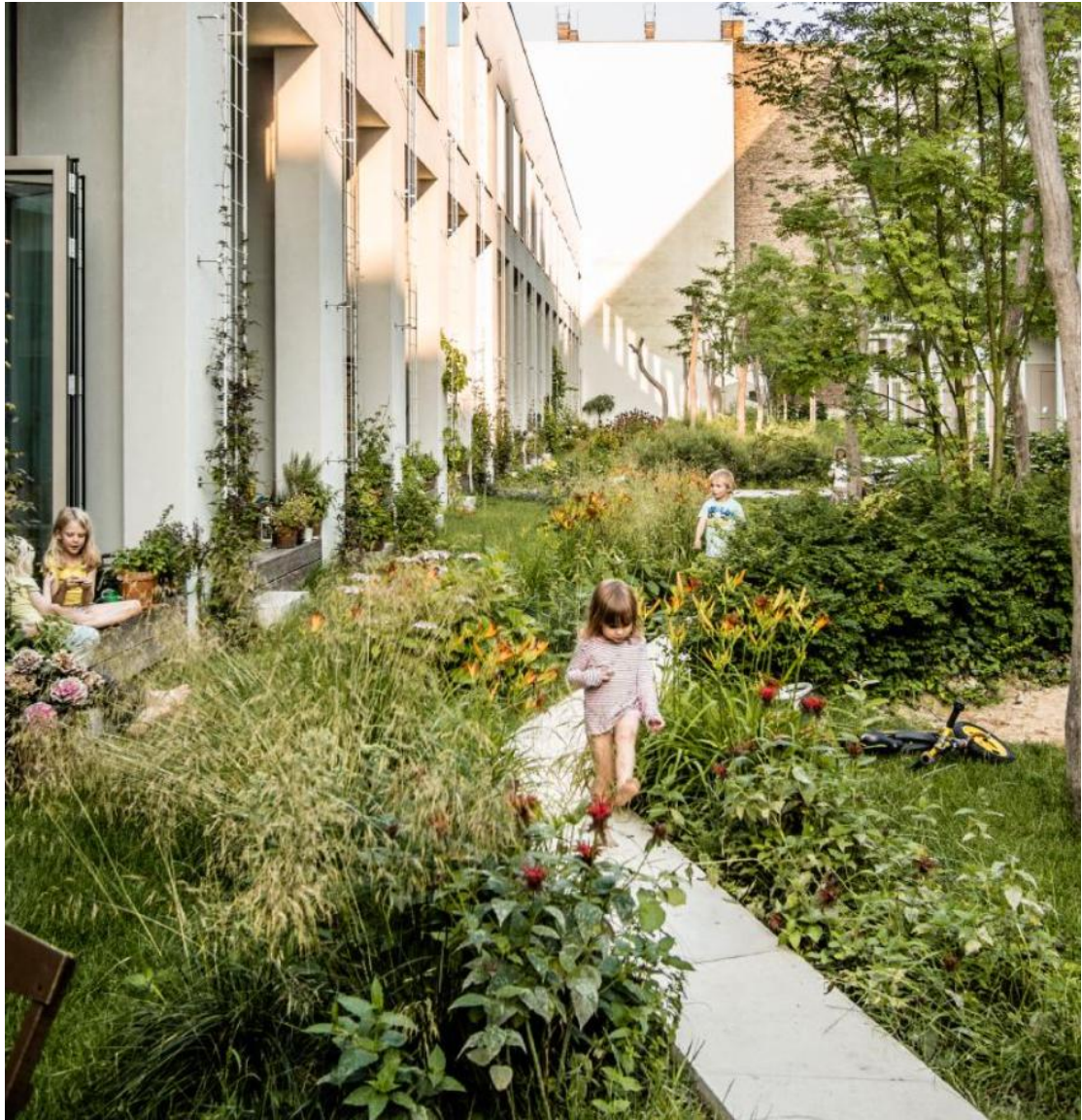


[The world' s first 3D-printed parkour playground was made with recycled concrete! - Yanko Design](#)



## ROOF GARDEN

[zanderroth architekten](#), [Simon Menges](#) • [ze05](#) • [Divisare](#)



Garden design and Site plan

Inspiration

Whitely Bay  
Porty skatepark

Why not pump track because narrow sapce can only have single track, speed limit incase of danger hazard.

All the ramp are less than 1300, which is also the height of the wall on the roof.  
Spaced distance are around 5m. incase the board flew out and so on, also provide garden space for people to sit down. Provide space for viewing platform ?

Obstacles are measured from google earth - actual park



[\(1261\) Pinterest](#)



The courtyard at [VIA 57 West](#) is a park within a pyramid—a space that works in concert and in contrast with the building that surrounds it.

[VIA 57 West | Starr Whitehouse](#)



## **wavy concrete strips stretch along french industrial site to form 'skatepark continua'**

[skatepark continua forms as wavy concrete strips along french industrial site \(designboom.com\)](https://www.designboom.com/skatepark-continua-forms-as-wavy-concrete-strips-along-french-industrial-site/)



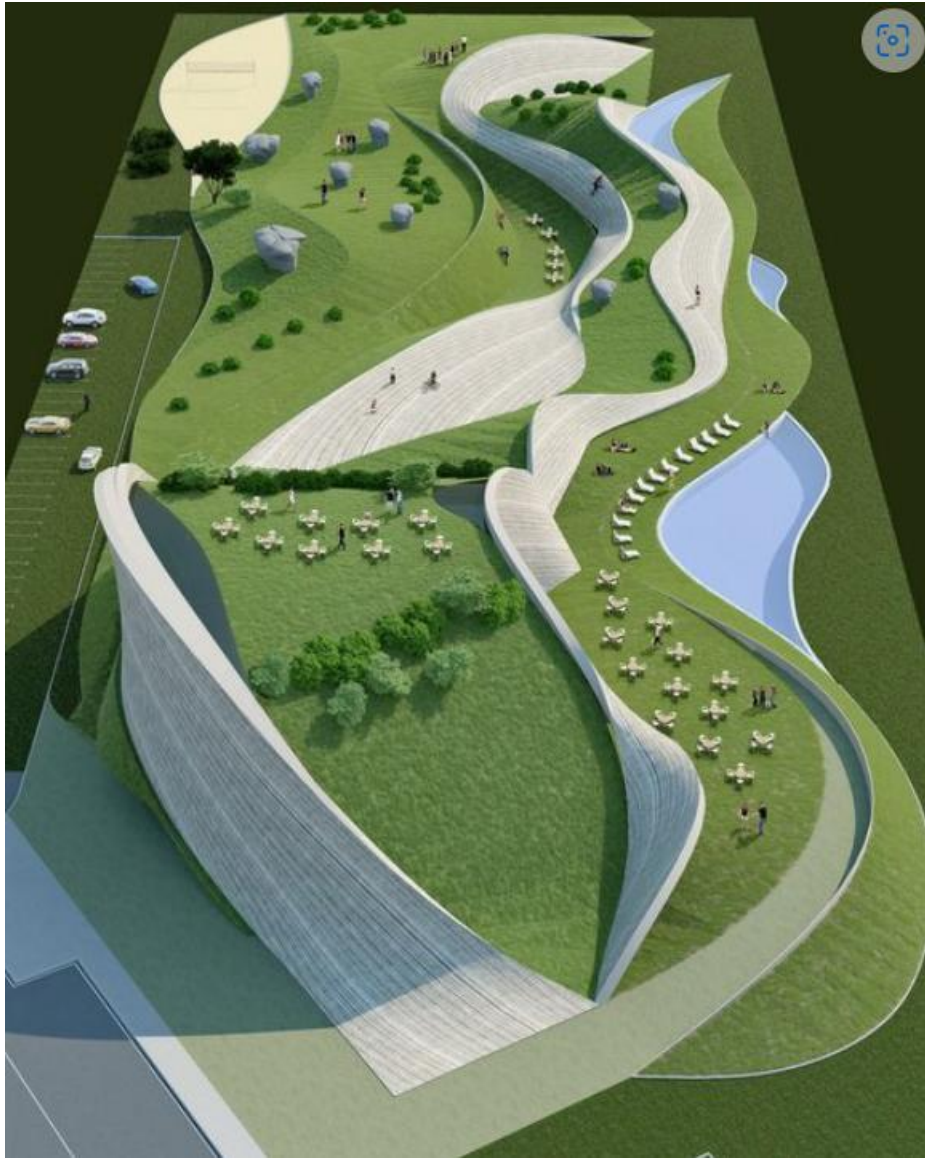
[Rather Korso by DTP « Landscape Architecture Platform | Landezine](#)



## **High Line timeline: a monograph on Diller Scofidio + Renfro and James Corner Field Operation's masterpiece**

[Tracking the High Line | Wallpaper](#)



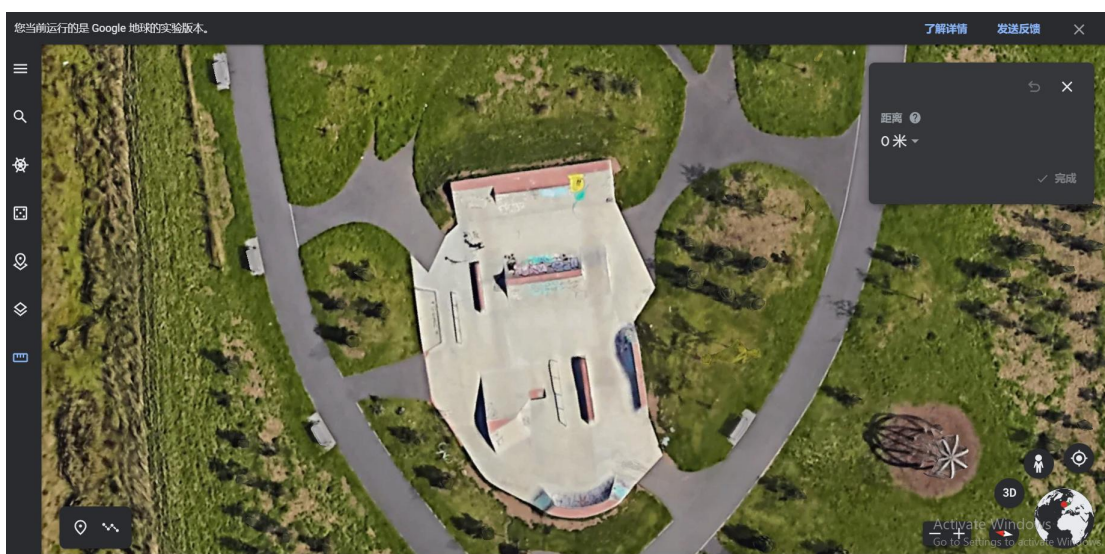


## Collider Activity Center Competition Entry | Architectural Studio Keremidski

[Collider Activity Center Competition Entry | Architectural Studio Keremidski - Arch20.com](#)



[Eidanger, lokal sport | Fikk 230.000 til sykkelbane \(pd.no\)](#)





CONCRETE PIPE

## Concrete Pipe Sizes Available in the USA: A Comprehensive Guide

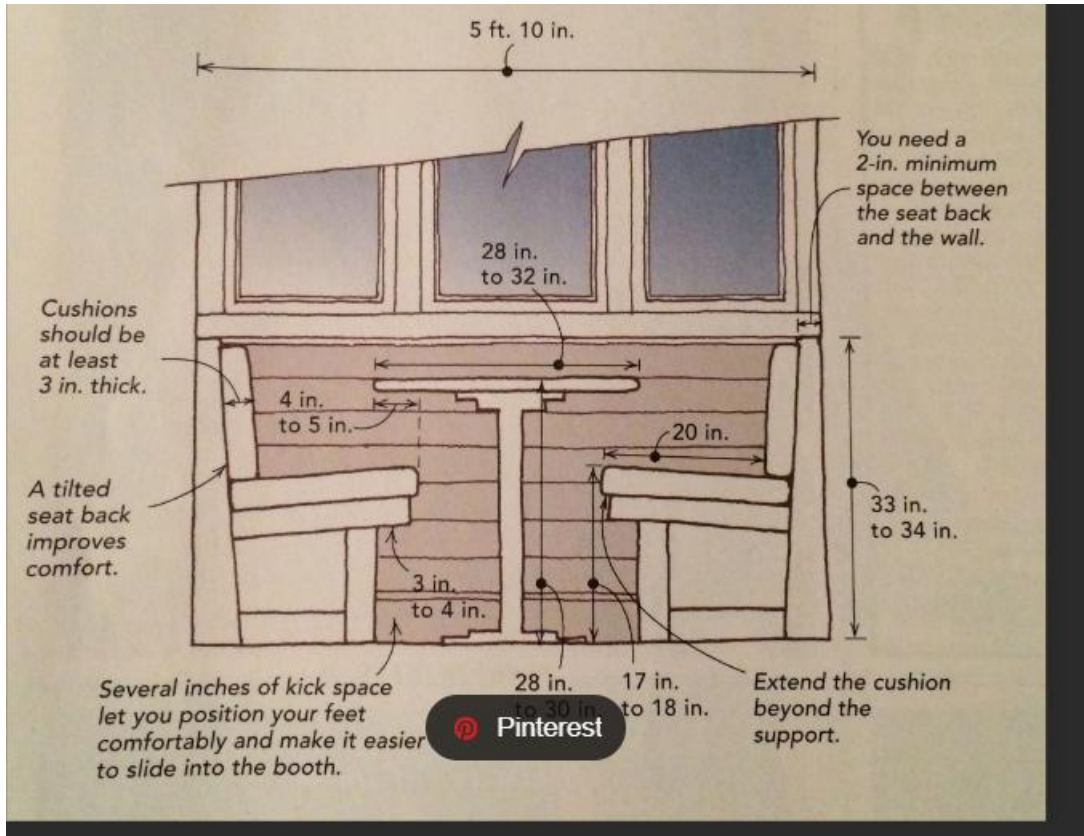
### Dimensions & Approximate Weights of Circular Concrete Pipe English Units

ASTM C76 – Reinforced Concrete Culvert, Storm Drain and Sewer Pipe					
		WALL B		WALL C	
Internal Diameter, inches	Waterway Area, square feet	Minimum Wall Thickness, inches	Approximate Weight, lbs. per foot	Minimum Wall Thickness, inches	Approximate Weight, lbs. per foot
12	0.8	2	93	---	---
15	1.2	2.25	127	---	---
18	1.8	2.5	168	---	---
21	2.4	2.75	214	---	---
24	3.1	3	264	3.75	365
27	4.0	3.25	322	4	420
30	4.9	3.5	384	4.25	475
33	5.9	3.75	451	4.5	550
36	7.1	4	524	4.75	655
42	9.6	4.5	686	5.25	810
48	12.6	5	867	5.75	1,010
54	15.9	5.5	1,068	6.25	1,210
60	19.6	6	1,295	6.75	1,475
66	23.8	6.5	1,542	7.25	1,735
72	28.3	7	1,811	7.75	2,015
78	33.2	7.5	2,100	8.25	2,410
84	38.5	8	2,409	8.75	2,660
90	44.2	8.5	2,740	9.25	3,020
96	50.2	9	3,090	9.75	3,355
102	56.7	9.5	3,480	10.25	3,760
108	63.6	10	3,865	10.75	4,160

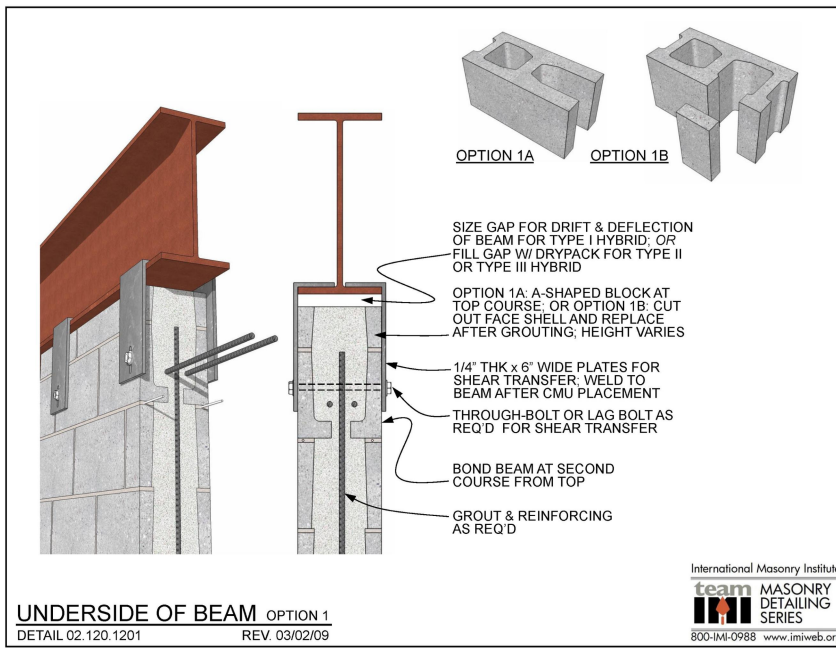
Dimensions & Approximate Weights of Circular Concrete Pipe

[Concrete Pipe Sizes Available in the USA: A Comprehensive Guide – Drainage Advice](#)

[Your Guide to Standard Concrete Pipe Sizes | AmeriTex Pipe](#)



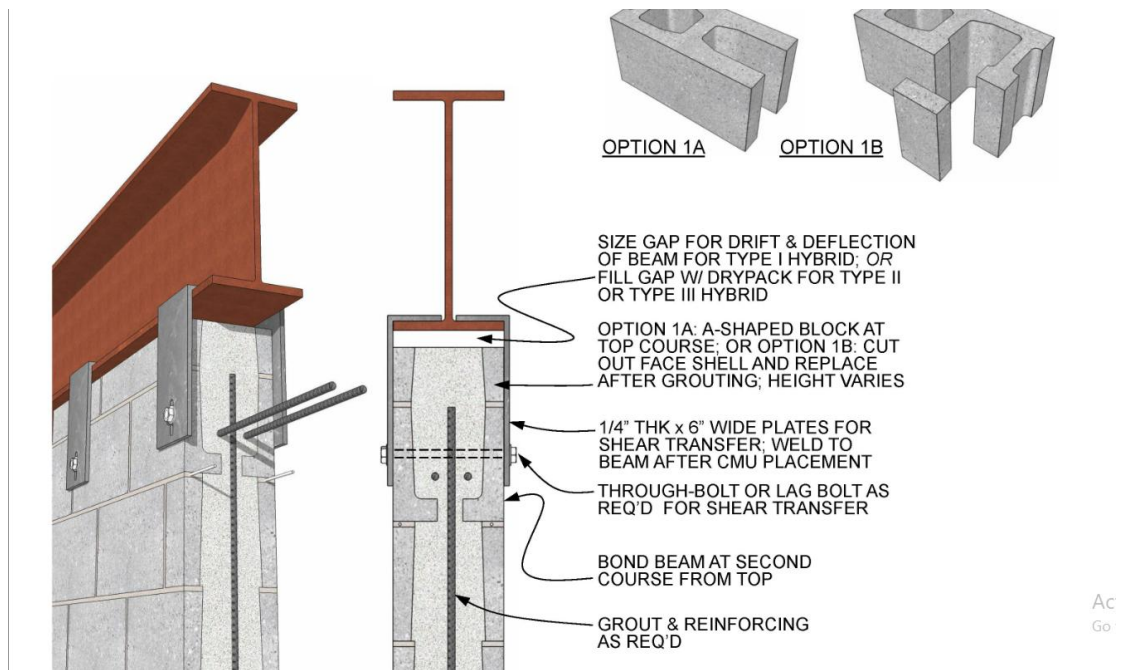
Steel beams and concrete walls



[Steel Beam to Concrete Wall Connection Detail - Bing images](#)



[Steel Beam to Concrete Wall Connection Detail - Bing images](#)  
[Proposed steel beam to existing concrete wall connection advice - Structural engineering general discussion - Eng-Tips](#)  
[02.120.1201: Underside of Beam - Option 1 | International Masonry Institute \(imiweb.org\)](#)



[SCI P102.pdf \(steelconstruction.info\)](#)

SCI PUBLICATION 102

CONNECTIONS  
BETWEEN STEEL  
AND OTHER  
MATERIALS

INTERFACES

R G Ogden BA(Hons), Dip Arch, PhD, MCSD  
R Henley BSc (Hons)



[Make the most of your balcony with a railing bar - ideacious](#)

4weeks before deadline submission  
Deadline is August 8<sup>th</sup>

[SASS-Design@ed.ac.uk](mailto:SASS-Design@ed.ac.uk)