

# Trollstigen Visitor Centre

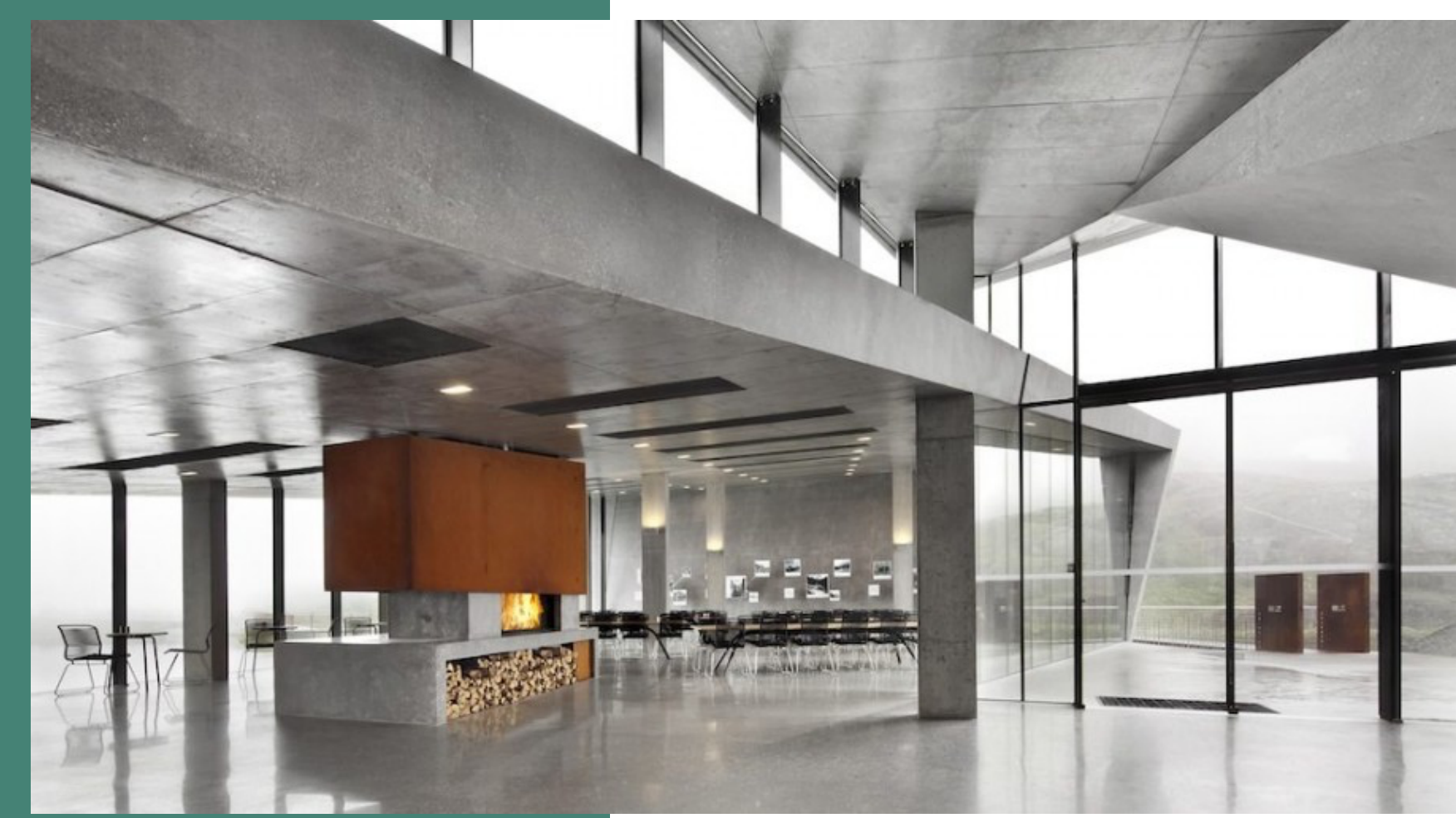
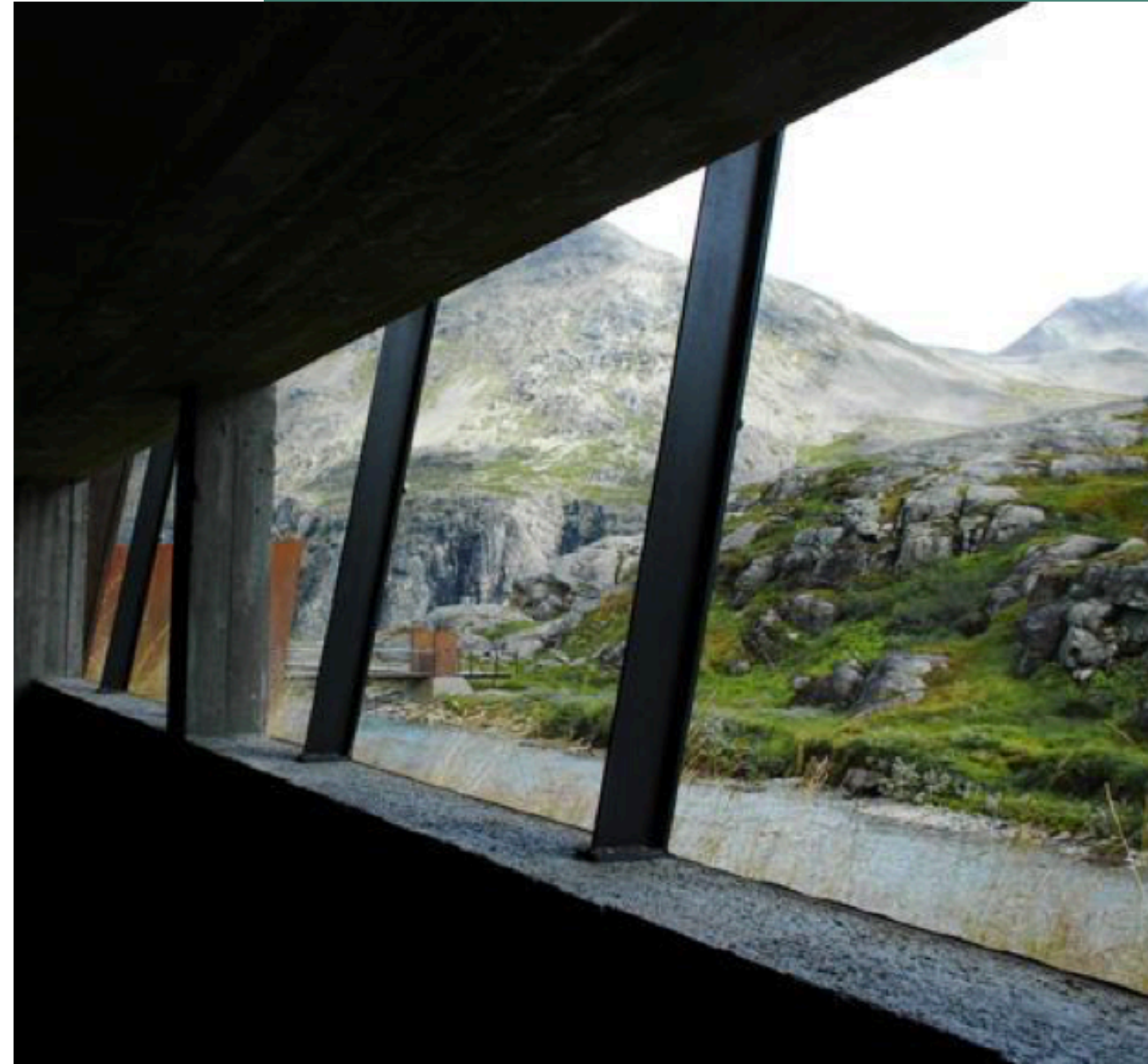


Reiulf Ramstad Architects, 2012

Romsdal, Norway

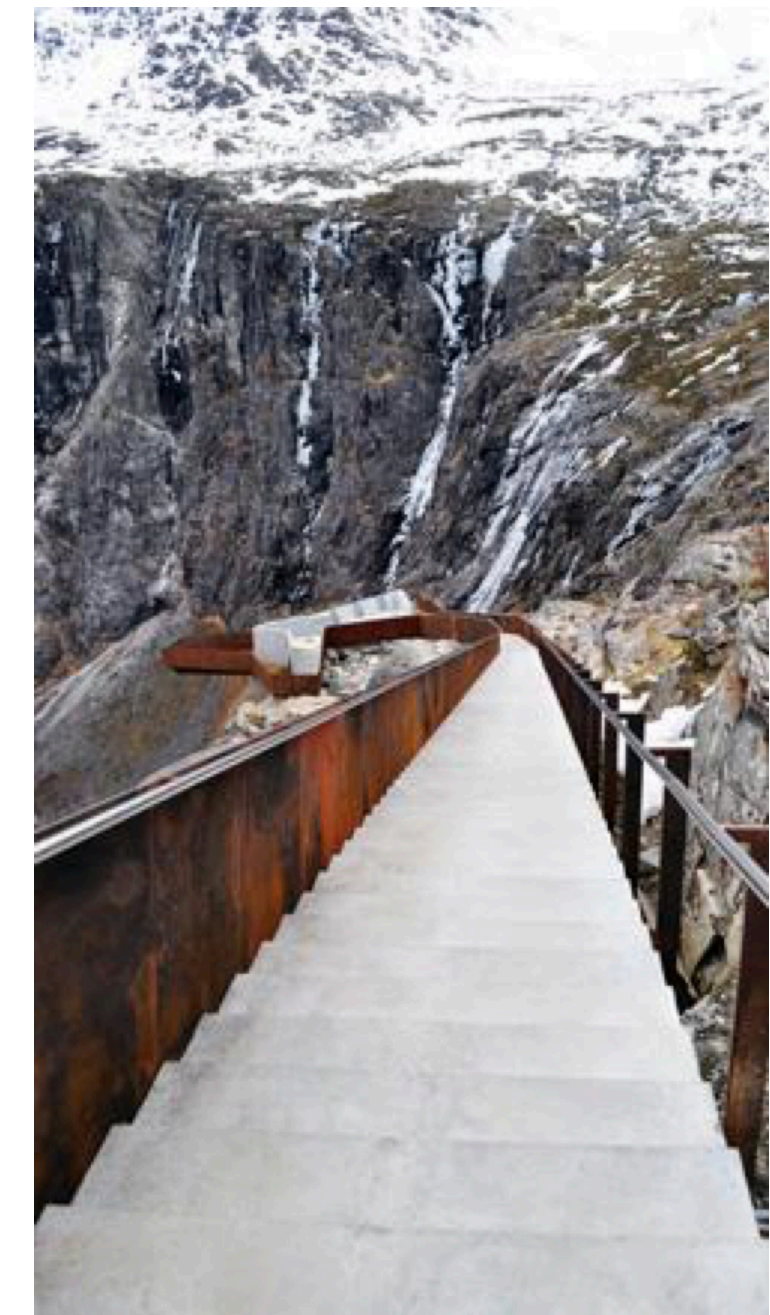
“All of these elements are moulded into the landscape so that the visitor’s experience seems even more intimate”

- angled concrete block contains a waterside restaurant and gallery
- Buildings resemble the shapes of the surrounding landscape
- Minimalistic design, oak tables and black accents, doesn’t take away from the view
- Some buildings contain service facilities, a kiosk and a souvenir store



## Materials

- cast in place concrete
- Cor-ten steel
- Surfaces alternate between being smooth as ice and rough as rocks echoing the complex natural forms of the mountain scape



## Sustainability

- low infrastructure consumption energy installations in all parts
- Mini hydro power plant



- Also integrates sustainability into urban design
- Is modern, minimalistic and quite futuristic but doesn't stand out. It fits well into the surrounding space and doesn't look out of place.

