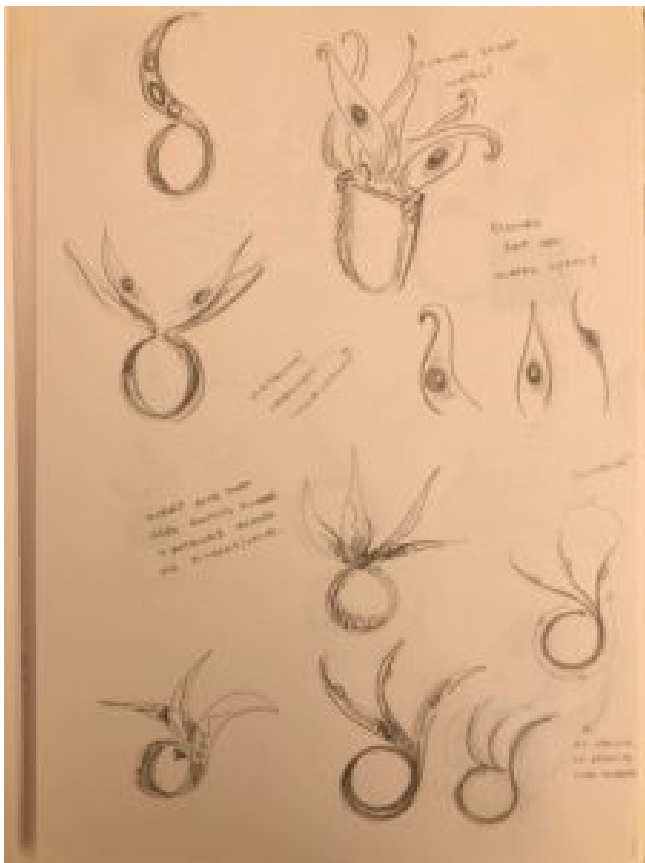
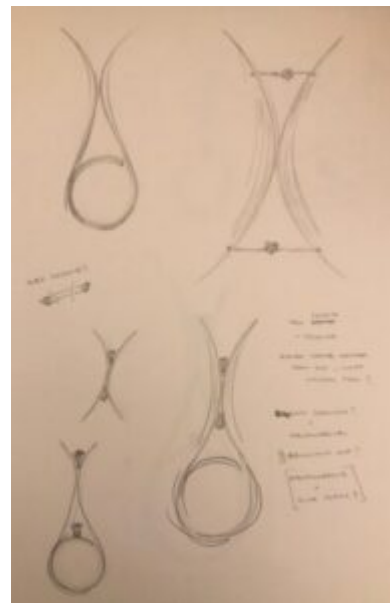
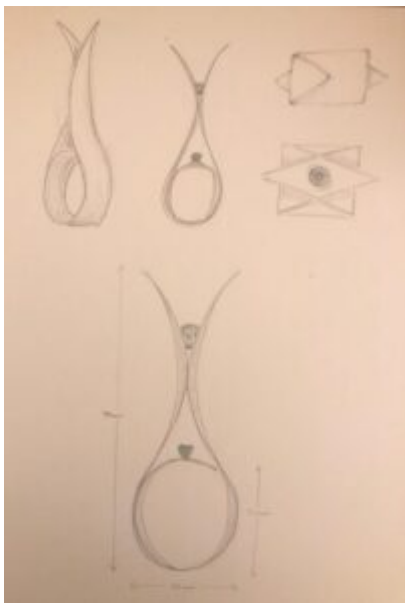
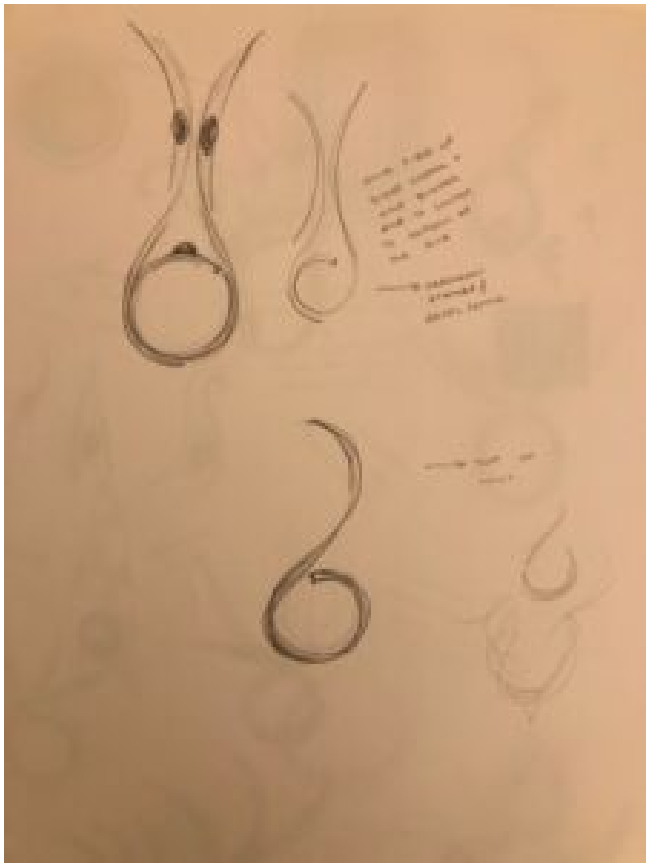


Scottish Ring Designs

I began working with basic simplified shapes that I thought best resembled the will o' the wisps and then refined the shape to a single continuous line which I thought best captured the shape and essence of the wisps. I wanted to make the ring feel more like a piece of sculptural jewellery than a simple accessory so I decided to create a more symmetrical design with two wisp shapes mirroring each other. I knew I wanted to have a central stone to resemble the 'soul' of the wisp so I began sketching ideas as to how I could potentially suspend the stone and how to incorporate another stone or two into the design without taking away from the minimalistic lines.







I thought about using a tension setting but decided against this due to the thickness of the sheet metal not being strong enough to hold a stone in place. I was also unsure as to where I would place a second stone in this design.









