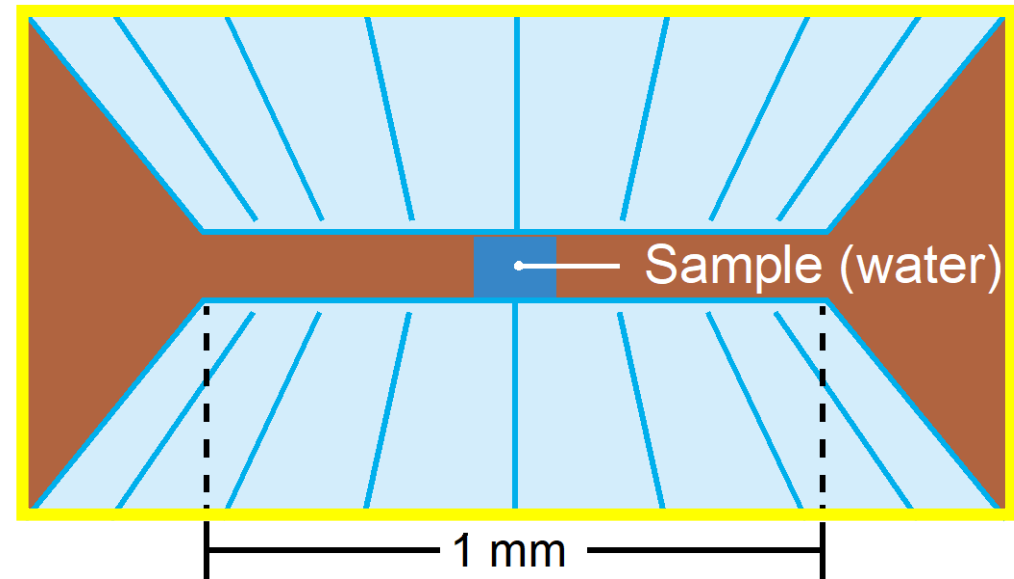
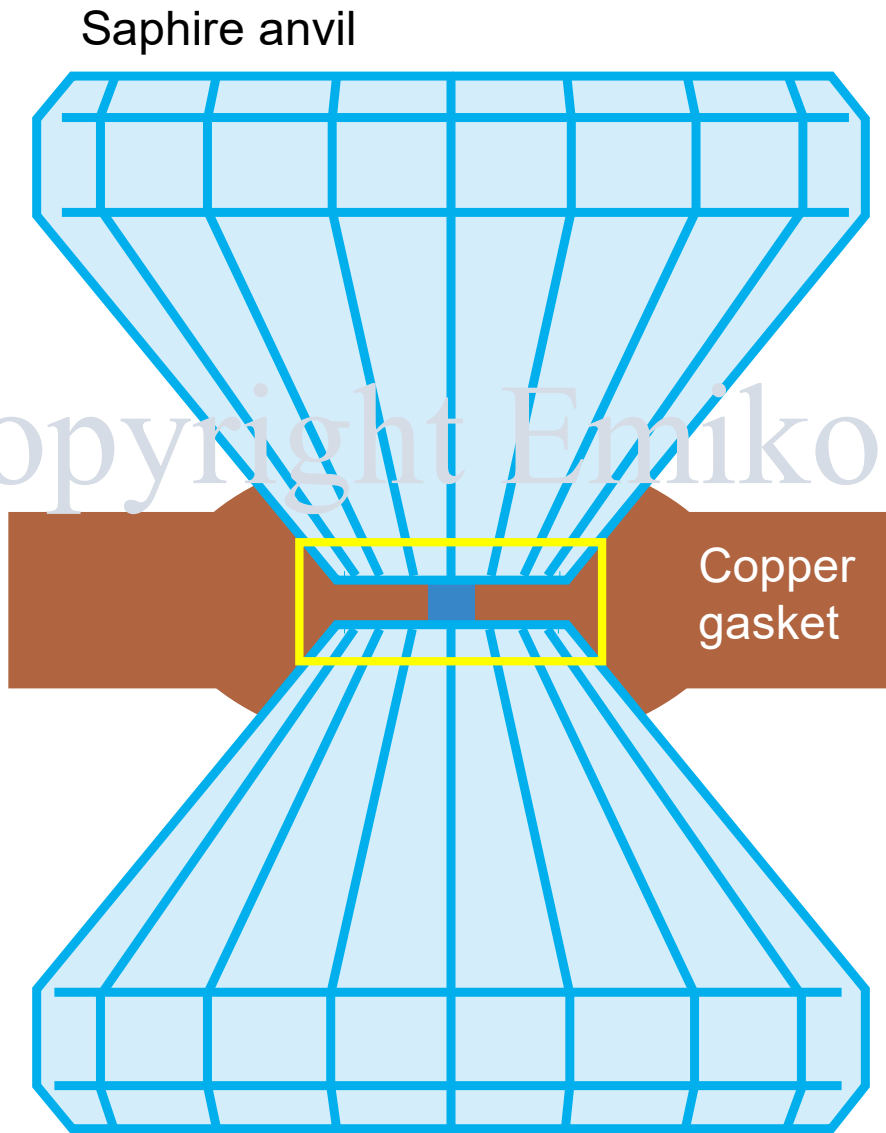


High-pressure experimental device "SEED"



Copyright Emiko Sugimura-Komabayashi

Interior of planets

Upper-Lower Mantle Boundary
(Transition zone)

Core-Mantle Boundary

26 GPa
1600 °C

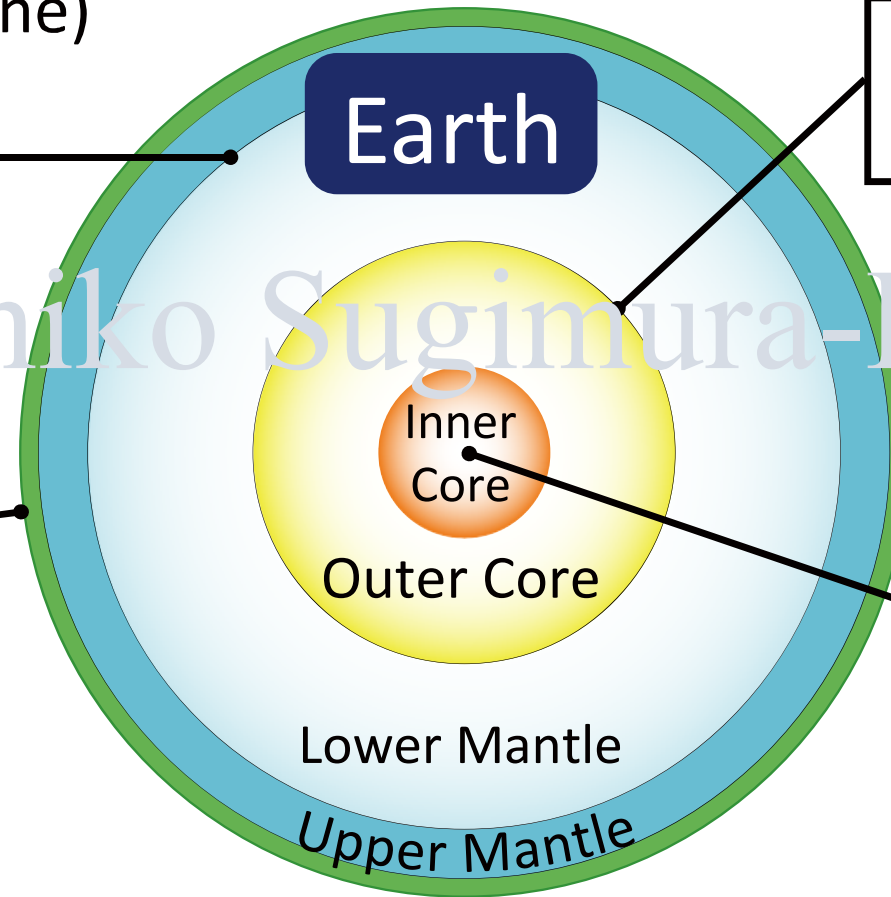
135 GPa
3000 °C

Surface

1 atm
27 °C

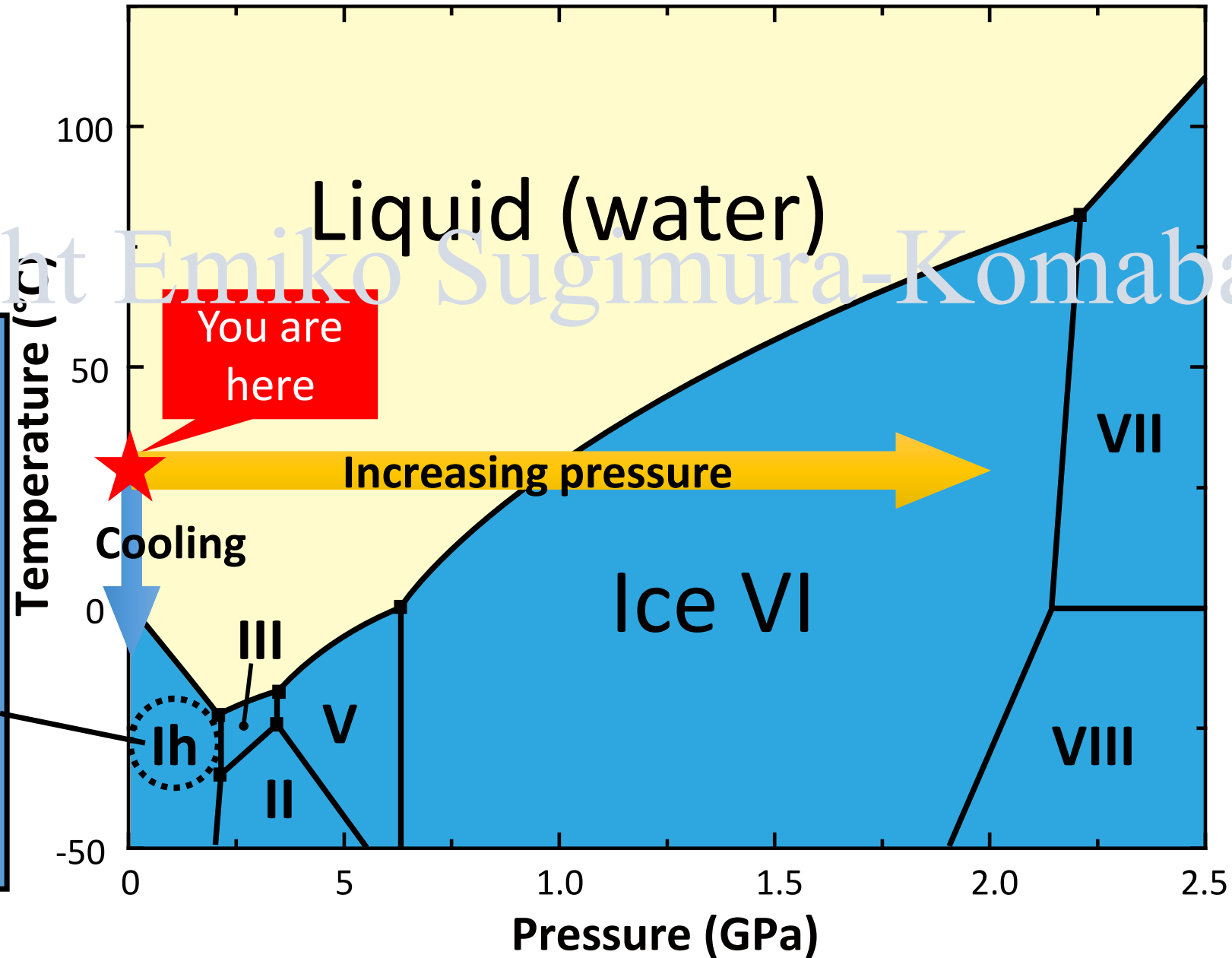
Centre

364 GPa
5000 °C




High-pressure & High-temperature

Phase diagram of H₂O



Copyright Emiko Sugimura-Komabayashi

Ordinary ice
II
Hexagonal Ice (Ih)



<https://physicsgeekblog.wordpress.com/2016/02/13/why-ice-cubes-dont-sink/>

Single crystal Ice VI
coexisting with water

Copyright Emiko Sugimura-Komabayashi

Ice VI



Water



Copper gasket

Do we have Hot Ice in our Solar System?

