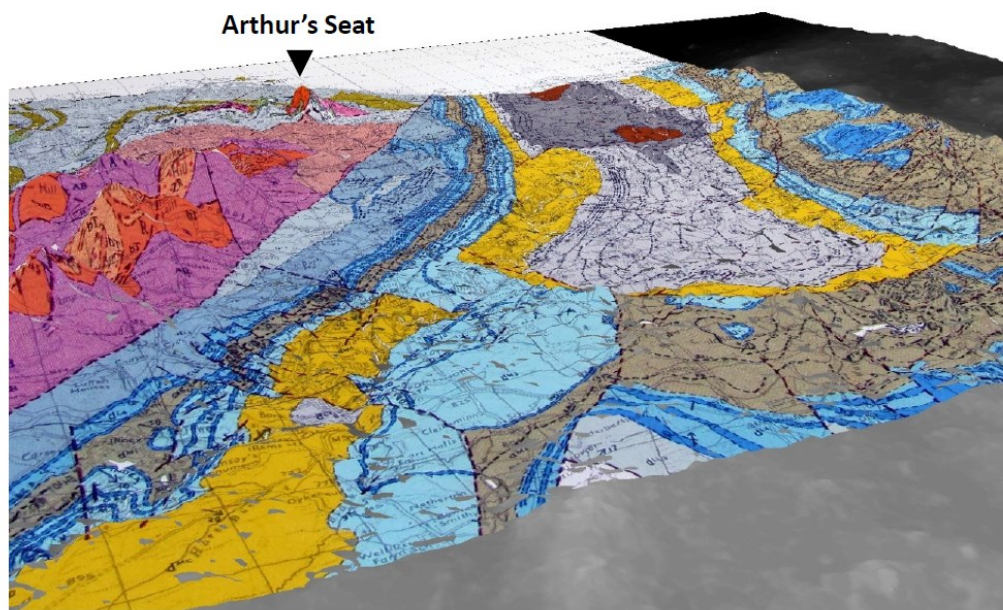
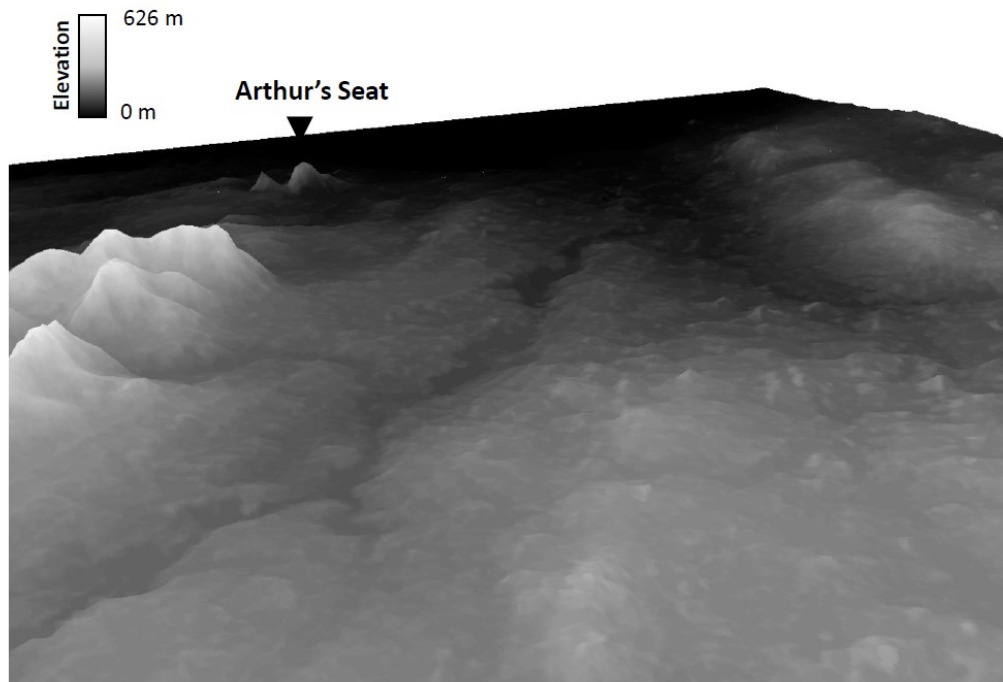


GIS tools for GeoSciences undergrad students

Mikaël Attal
School of GeoSciences



GIS tools for GeoSciences undergrad students

→ Retrieve topographic data, manipulate them in ArcMap / ArcScene, Georeference images, do basic topographic analysis, advanced topographic analysis, prepare base maps, ArcGIS online(?)

Introduction to the Geological Record: 1st year ES

Geology and Landscapes: 3rd year Geology + GPG

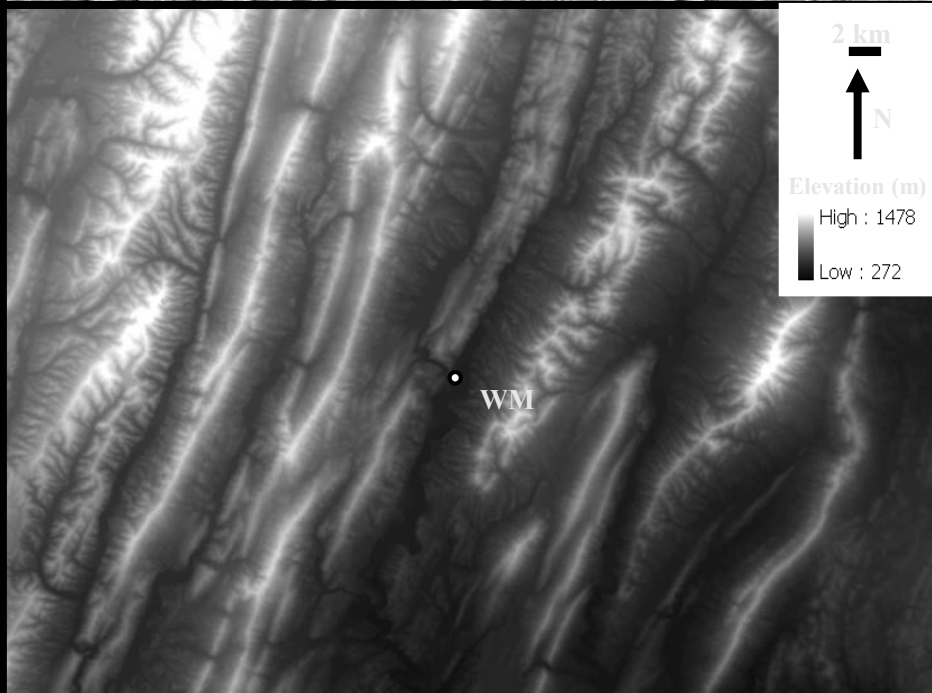
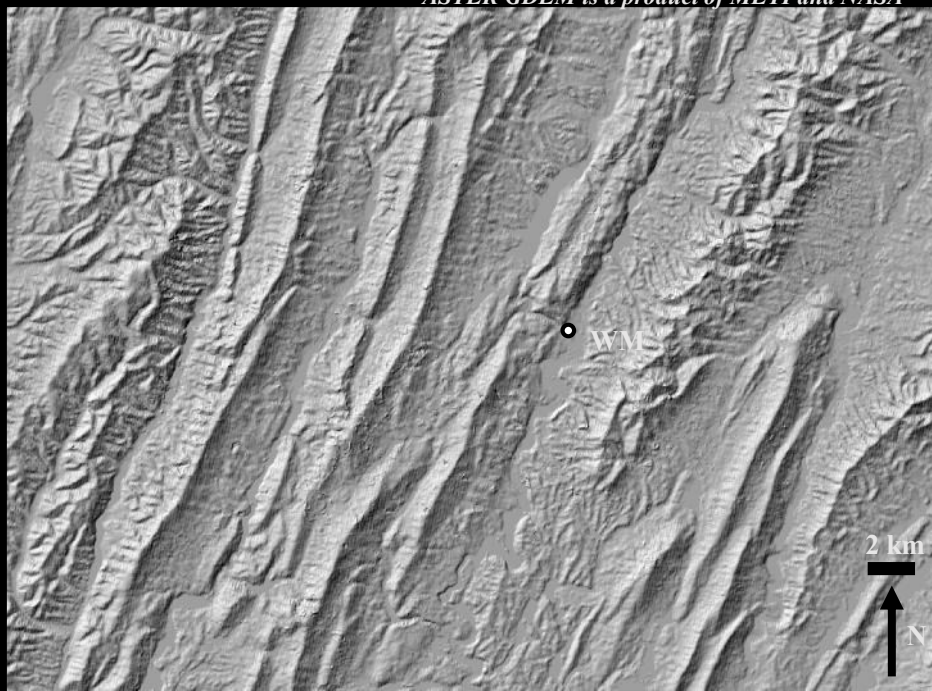
Eroding Landscapes: 3rd-4th year Geography option

Geology – Geography – GPG 4th year dissertation / mapping project

**Geological map with relief, Williamsville,
VA 1:62500**

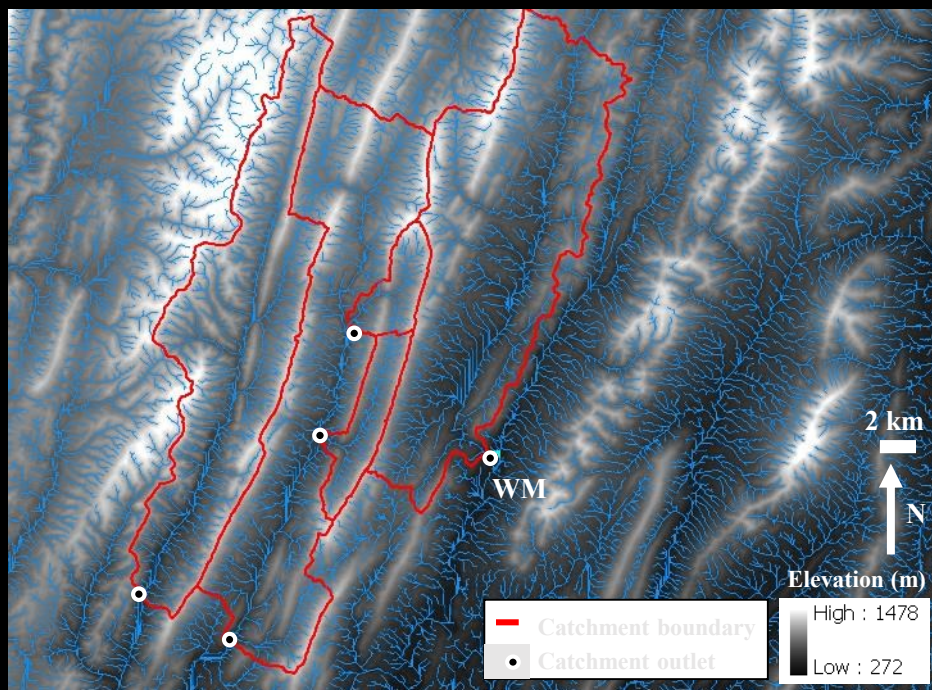
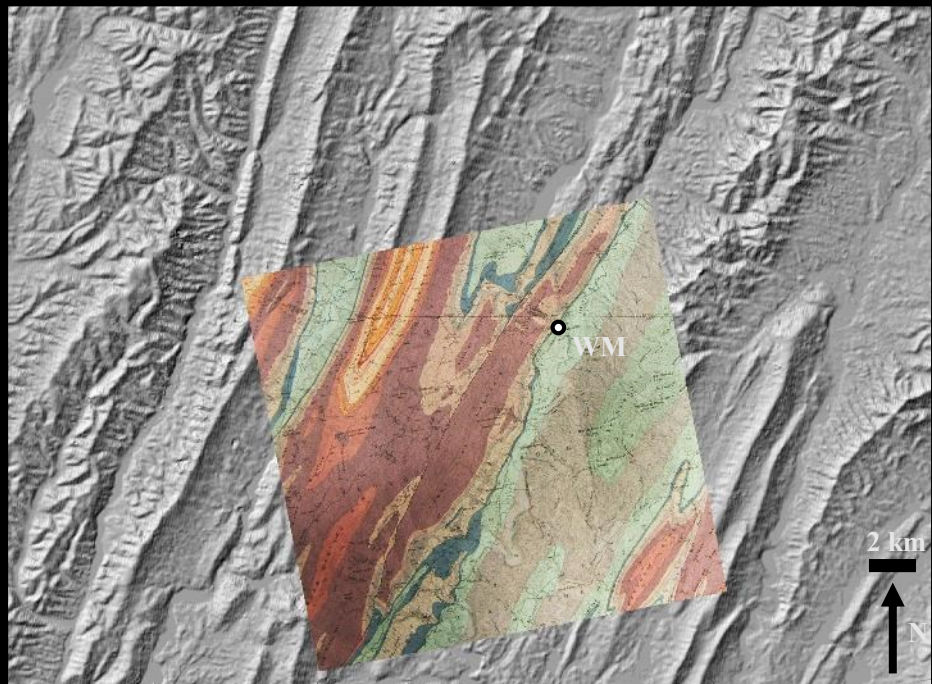


DEM and shaded relief of the Williamsville area, Virginia



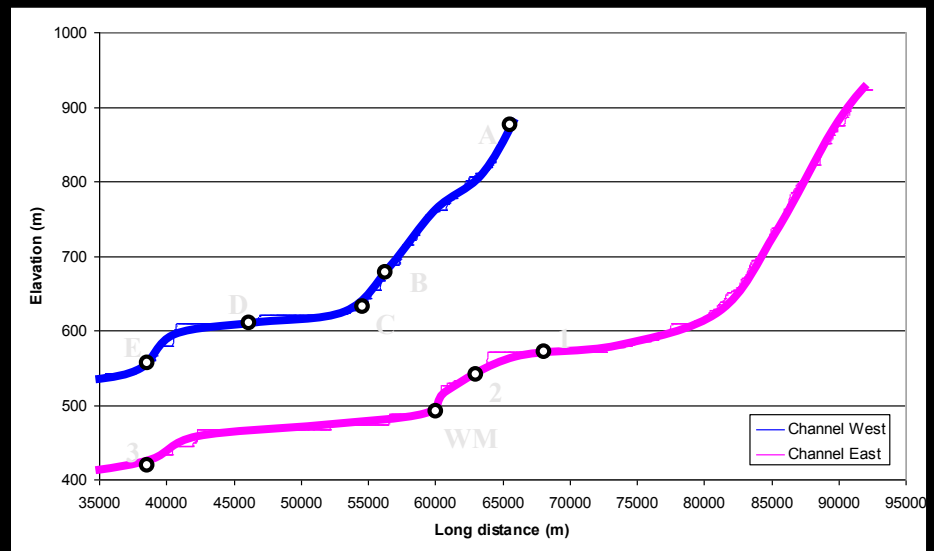
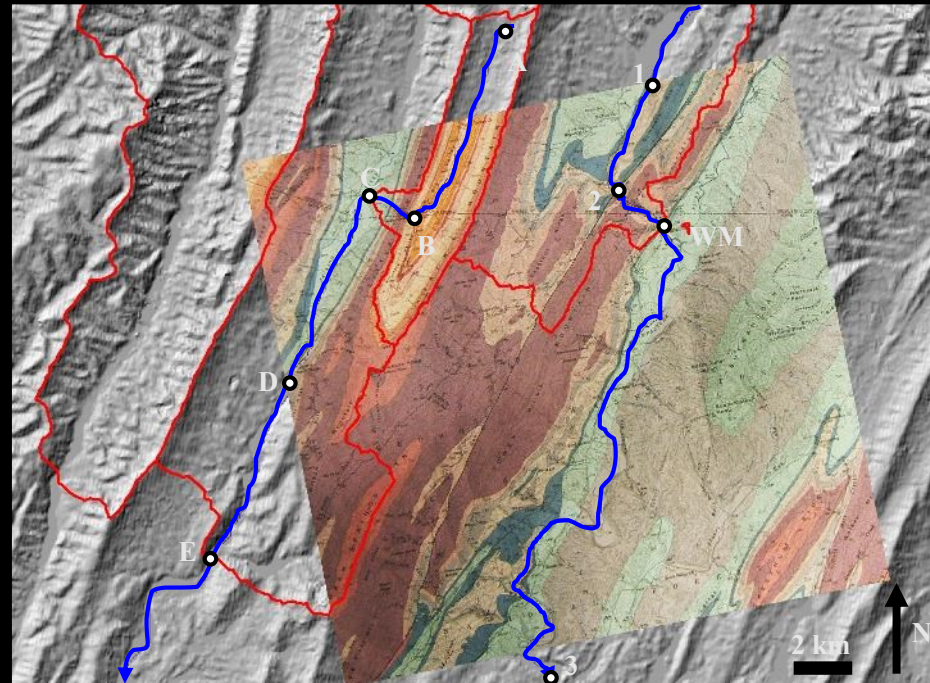
WM = Williamsville. Note: scale is not the same on the 2 diagrams

River network and boundaries of a few selected catchments; geological map on shaded relief map



WM = Williamsville. Note: scale is not the same on the 2 diagrams

Plan view (top) and profiles (bottom) of two rivers in the study area



Meander cut-off on Google Earth

→ Geomorphology
Meander cutoff!

Texas, South of
Houston



1944 → 1995 → 2004 → 2005 → 2012