

Digital Mapping and History

Anna Groundwater

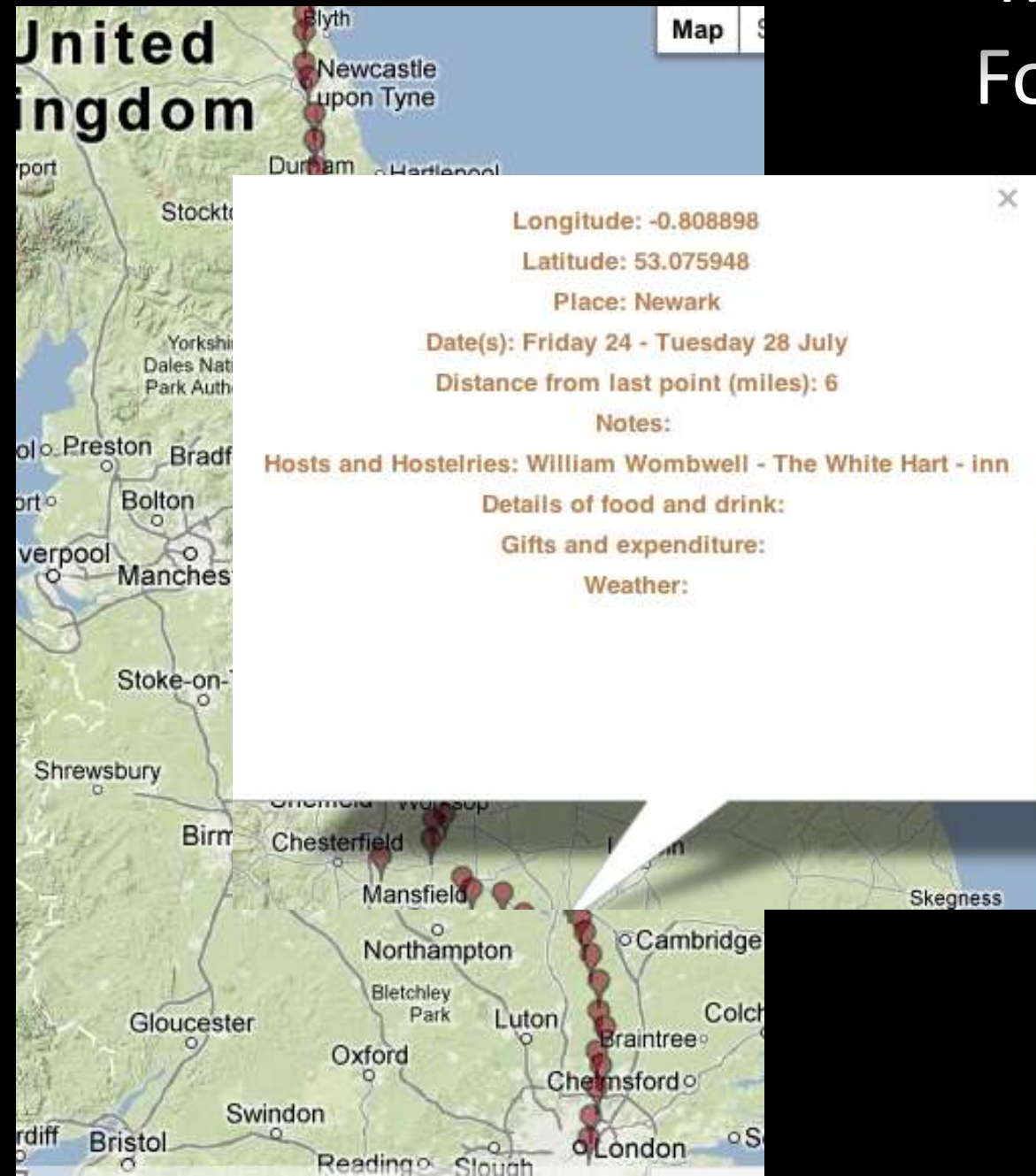
History

University of Edinburgh

anna.groundwater@ed.ac.uk

@agroundw

Mapping Jonson's Foot Voyage 1618: blog & twitter



Digitization and historical mapping

- Digitization of numerous historical maps allowing access to wealth of historical information
- Useful for tracking change, comparative
- Annotatable for re-use
- Manipulatable; stretch old maps onto modern spaces
- visualising older spaces, places or borders not present on modern maps
- Add meaning to, add layers of information/data
- GIS: geo-locating information

Expanding resources: Old Maps Online:

<http://www.oldmapsonline.org/>

OLD MAPS ONLINE

Search

1000 1250 1500 1750 2010

Search Collections Blog About

Instant Search Results: [Fulltext](#)

+
-
Q

Greenland

Finland

Iceland

Sweden

Norway

Russia

United Kingdom

Poland

Germany

Ukraine

Kazakhstan

Mongolia

France

Italy

Turkey

China

South Korea

Spain

Algeria

Libya

Egypt

Saudi Arabia

Afghanistan

Pakistan

India

Thailand

Mali

Niger

Chad

Sudan

Iraq

Iran

Indonesia

Nigeria

Ethiopia

Kenya

Tanzania

Angola

DR Congo

Madagascar

Namibia

Botswana

South Africa

Canada

United States

Mexico

Venezuela

Colombia

Brazil

Peru

Bolivia

Chile

Argentina

North Atlantic Ocean

South Atlantic Ocean

Google

Terms of Use

Isothermal chart.
1:95 000 000
1824 - Woodbridge, William C.

Isothermal chart, or, View of climates & productions / drawn from the accounts of Humboldt & others, by W.C. Woodbridge.
1823 -

Inhabited World.
1:93 000 000
1824 - Woodbridge, William C.

Isothermal chart, productions.
1:80 000 000
1837 - Woodbridge, William C.

Animals - World.
1837 - Woodbridge, William C.

JISC

University of Portsmouth

KLOKAN TECHNOLOGIES

Facebook Twitter Google+

Ocean Atlantique et

National Library of Scotland, Maps website:

<http://maps.nls.uk>

Explore

Access high-resolution zoomable images of over 91,000 maps of Scotland and beyond.

[More about this resource](#)



Find by place

Maps of Scotland

County maps

Town plans and views

Series maps

Coasts of Scotland

Bathymetrical Survey

Military maps

Estate maps

Browse by category

Other links



Recent Additions



Geo-referenced Maps



View Side by Side



Map makers



OS sheet records




Projects

Slezer's Scottish towns prospects, *Theatrum Scotiae*, 1693, Culross

<http://digital.nls.uk/slezer/find.html>



NLS Maps, Side by Side comparisons over time: Edinburgh 1765 & at Great Reform Act, 1832

 **Map images** [Find by place](#) | [Explore Georeferenced Maps](#) | [Side by Side](#) <http://maps.nls.uk/geo/explore/sidebyside.cfm#zoom=15&lat=55.95&lon=-3.186&layers=124>

Compare a selection of historic maps to modern map or satellite layers

Keyword search

1. Select a category: [Zoom to this map series](#)
2. Select a map series:



1. Select a category: [Zoom to this map series](#)
2. Select a map series:



Geo-referenced historical maps: 'stretched' overlays on modern maps:



Map
images

[Find by place](#) | [Explore georeferenced maps](#) | [Side by Side](#)

View a selection of historic maps as overlays on a modern map or satellite image

<http://maps.nls.uk/geo/explore/index.cfm#zoom=14&lat=55.94865&lon=-3.18162&layers=126>

Edinburgh Ainslie 1804
Keyword search

Maps home > Town Plans / Views, 1580-1919

View basket

Find by place

Browse by category

Find a place:

Gazetteer / NG Ref:

OR

County:

Choose an historic map overlay:

1. Select a category:

2. Select a map / map series:

[Zoom to this map / map series:](#)

These overlay lists automatically update to those covering the map

Change transparency of overlay:



Help

Print view

Map Key

TIP: Hold [Shift] key, and select (drag cursor) to zoom to a specific area.

Use of cookies

Site map

Contact

About

Geo-referenced overlays: Govan 1857, shipyards



Map
images

[Find by place](#) | [Explore georeferenced maps](#) | [Side by Side](#)

<http://maps.nls.uk/geo/explore/index.cfm#zoom=16&lat=55.86016&lon=-4.30061&layers=80>

Keyword search

View a selection of historic maps as overlays on a modern map or satellite image

Maps home > Ordnance Survey large scale Scottish town plans, 1847-1895

View basket

Find by place

Browse by category

Find a place:

Gazetteer / NG Ref:

or

County:

Choose an historic map overlay:

1. Select a category:

2. Select a map / map series:

[Zoom to this map / map series:](#)

These overlay lists automatically update to those covering the map

Change transparency of overlay:



Help

Print view

Map Key

TIP: Hold [Shift] key, and select (drag cursor) to zoom to a specific area.

Use of cookies

Site map

Contact

About

Geo-referenced overlays: mapping densities: Govan-OS Map of Britain, 1945, Iron and Steel



[Find by place](#) | Explore georeferenced maps | [Side by Side](#)

View a selection of historic maps as overlays on a modern map or satellite image <http://maps.nls.uk/geo/explore/index.cfm#zoom=7&lat=54.95089&lon=-3.38184&layers=10iron>

Maps home > OS ten-mile to the Inch Planning Maps of Great Britain, 1944-1960

[Find by place](#) [Browse by category](#)

Background map - Google Hybrid

Measurement tools

Gazetteer / NG Ref:

or
County:

Choose an historic map overlay:

1. Select a category:

2. Select a map / map series:

[Zoom to this map / map series:](#)

These overlay lists automatically update to those covering the map

Change transparency of overlay:



© OpenStreetMap Map data ©2014 GeoBasis-DE/BKG (©2009). Google Imagery ©2014 TerraMetrics Terms of Use : Report a map error

[Help](#) [Print view](#) [Map Key](#)

TIP: Hold [Shift] key, and select (drag cursor) to zoom to a specific area.

[Use of cookies](#) [Site map](#) [Contact](#) [About](#)

Govan compared on Side by Side view: Govan on Roy's Lowlands Map, 1752-5

<http://maps.nls.uk/geo/explore/sidebyside.cfm#zoom=13&lat=-55.85776&lon=-4.25181&layers=4>



Map images

[Find by place](#) | [Explore Georeferenced Maps](#) | [Side by Side](#)

Keyword search

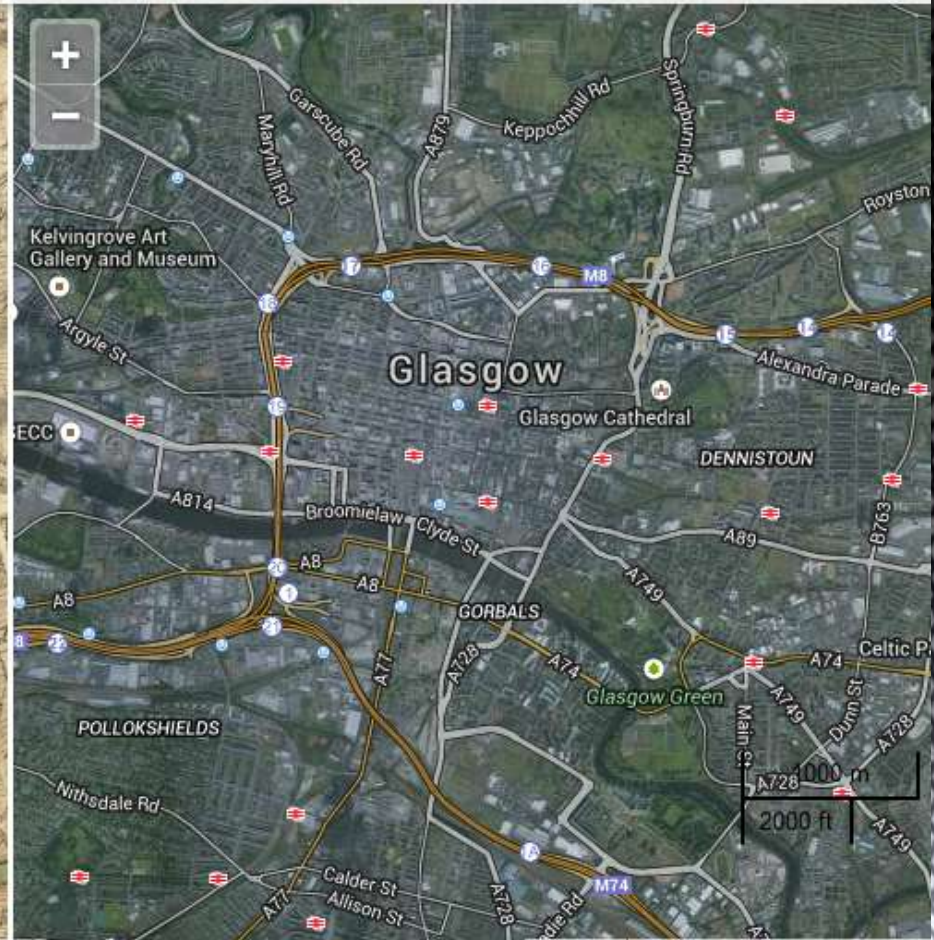
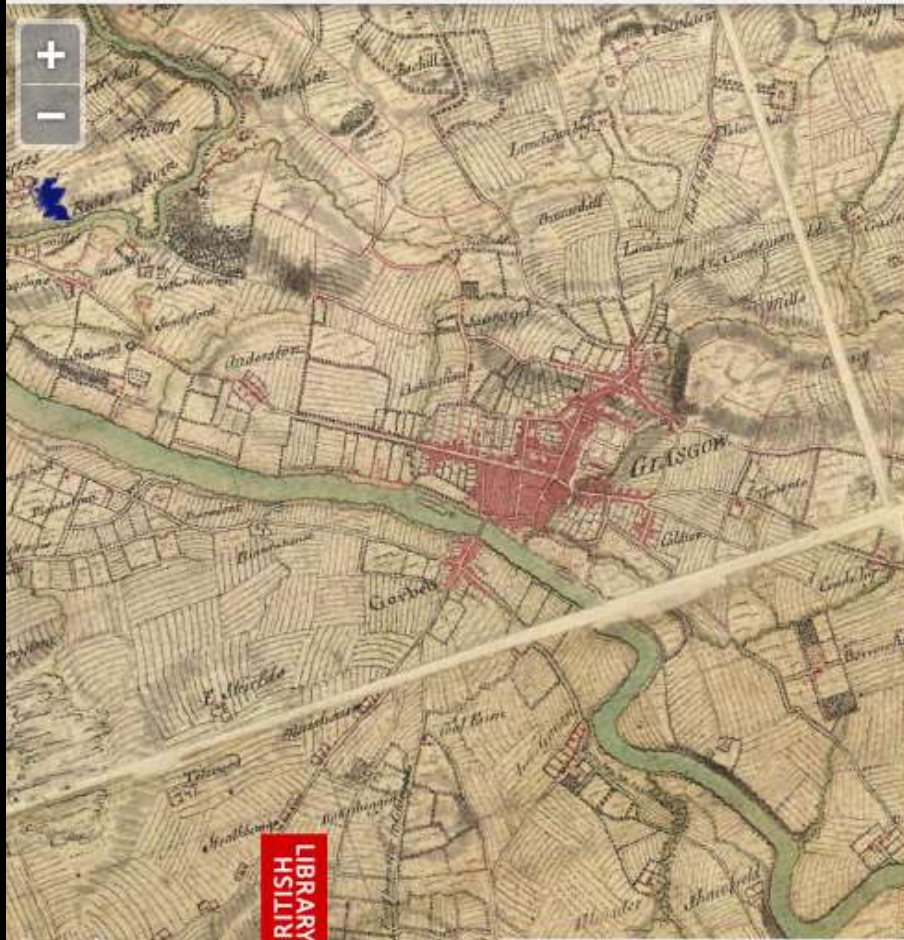
Compare a selection of historic maps to modern map or satellite layers

1. Select a category:

2. Select a map series: [Zoom to this map series](#)

1. Select a category:

2. Select a map series: [Zoom to this map series](#)





The most comprehensive maps and geospatial data available in UK Higher and Further Education

Map and Data Collections:



Welcome



My Digimap



Ordnance Survey



Historic



Geology



Marine



Environment



Discover

Welcome



What can I do with Digimap?

- You can view, annotate and print maps from a variety of geospatial data providers
- You can download geospatial data for use in CAD and GIS systems
- You can access information about geospatial data and resources



Service Announcements



How do I access Digimap?



Training & Support Resources

Digimap News

Digimap Printing: New Legends and a Layout Preview

6 March 2014 15:02:44 GMT

You can now print a legend with your map in Digimap Roam, Geology Roam, Marine Roam and Environment Roam. The legend comes as a ...

Follow us:



Have you seen?

Geospatial Services & Projects



GoGeo

Discover geospatial information

Historic Digimap: Ancient Roam

<http://www.digimap.edina.ac.uk/ancientroam/historic>

EDINA

Ancient Roam

[Home](#) > Ancient Roam

[Help](#) | [Contact Us](#) | [Log-Out](#)

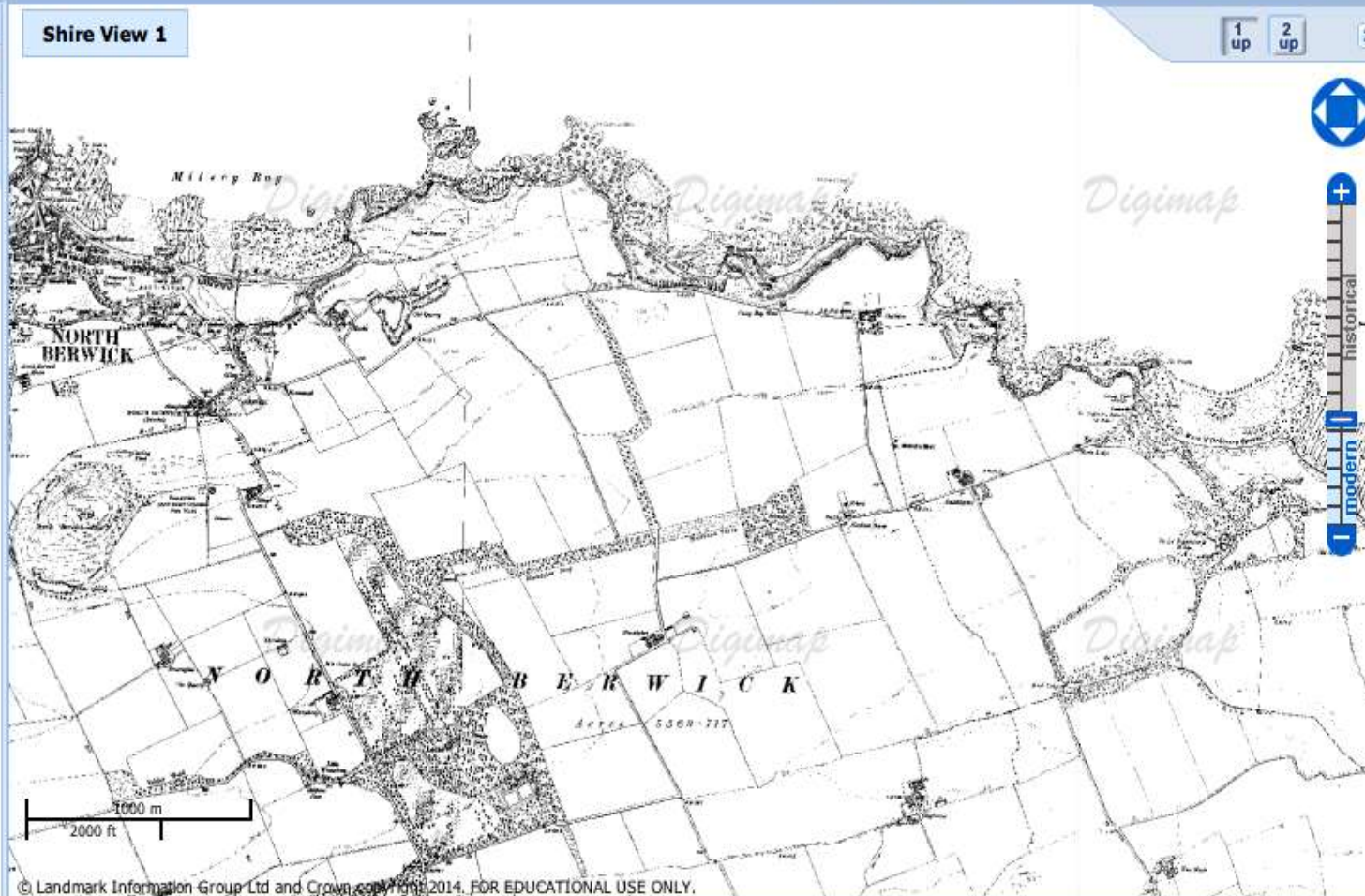
1850s 1860s 1870s 1880s 1890s **1900s** 1910s 1920s 1930s 1940s 1950s 1960s 1970s 1980s 1990s Contemporary

Save Print...

Map Tools i Search...

Shire View 1

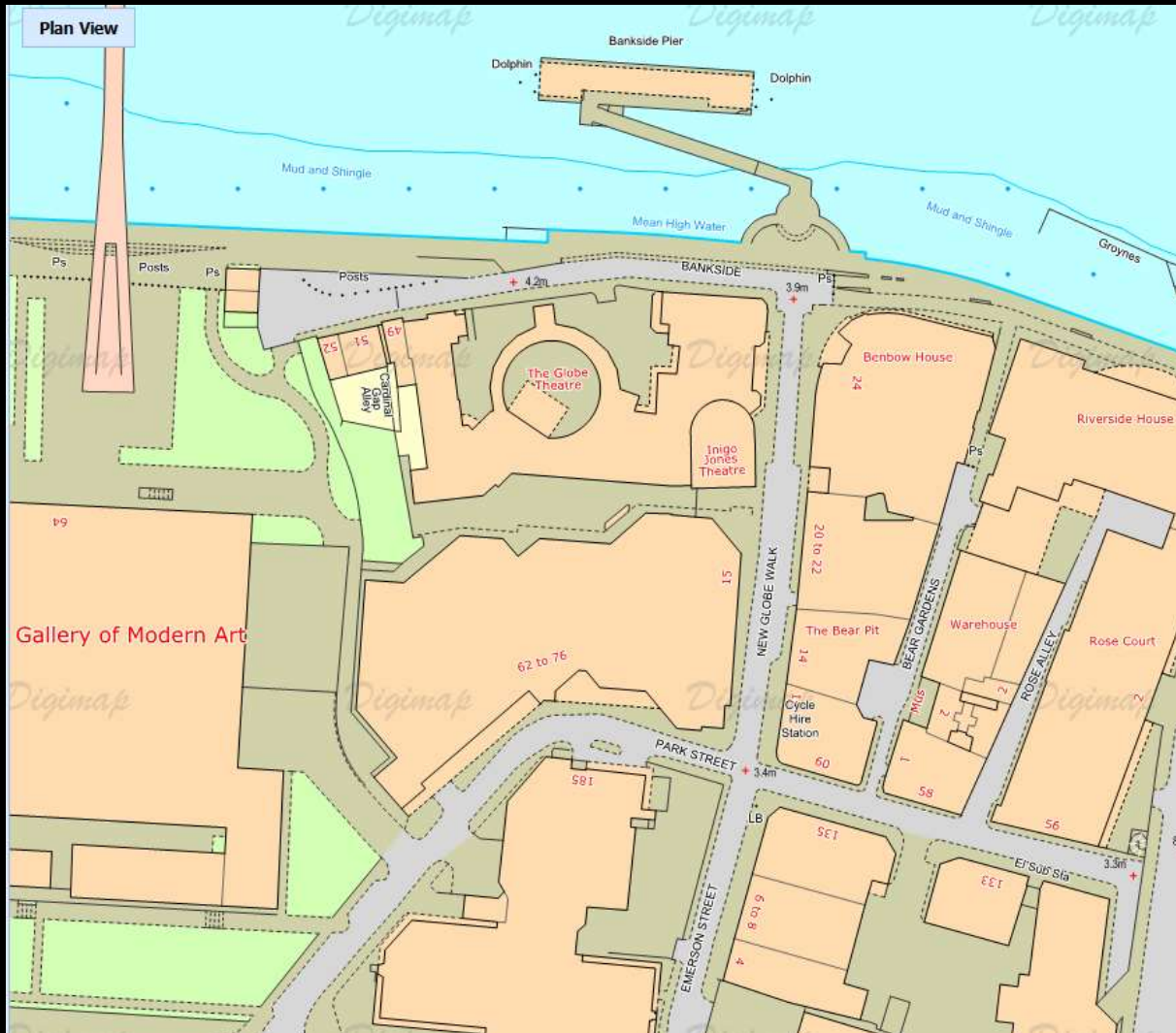
1 up 2 up



© Landmark Information Group Ltd and Crown copyright 2014. FOR EDUCATIONAL USE ONLY.

Digimap tutorial: Digimap webinars

<http://edina.ac.uk/events/>



- Large range of Ordnance Survey maps, frequently updated
- **Roam:** view, annotate, print, save maps
- **Data Download:** download map data and use in GIS/CAD


Digimap tutorial: Roam exercise 1 – getting started

Roam

Quick Guide

What is Roam?

Roam is an online mapping tool, which allows registered users to view, annotate, save and print Ordnance Survey maps at various fixed scales. PDF/PNG/JPG files for printing can be generated for A4-A0 paper sizes.



Roam is an online mapping tool, which allows registered users to view, annotate, save and print Ordnance Survey maps at various fixed scales. PDF/PNG/JPG files for printing can be generated for A4-A0 paper sizes.

Get started

Go to: <http://digimap.edina.ac.uk/>

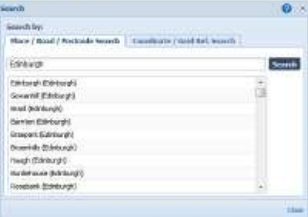
- Click Login and use your institutional login details.
- Click Register/Activate, if you have not registered.
- Hover over Ordnance Survey, then click Roam.

Search

There are a range of search options (find Search at top right of screen):





- Full postcode
- Place name
- Road/Street name
- Grid reference
- Easting/Northing
- Lat/Long

Enter your terms and click search.



Move around

- Zoom and pan using the tools on the right of the map.
- Zoom in by double clicking on the map.
- Zoom in/out by scrolling mouse wheel.
- Pan map by clicking with left mouse button and dragging.



Map images: © Crown copyright/database right 2013. Ordnance Survey/EDINA supplied service. FOR EDUCATIONAL USE ONLY.

- Search
- Basemaps
- Map information, move cursor for geo-referenced coordinates

Digimap tutorial: Roam exercise 2 – annotate, save, print

Features

Annotate



Use Map Tools to annotate maps. You can add symbols, shapes, lines and labels to a map.

Map Tools also provides tools to measure distance and area.

- Tips on annotating your maps:
- Adding lines and polygons? Click at each point, double click on last point.
- Set text, fill and stroke settings before you draw.
- Export, import options available in Save and Open menus.
- Annotations appear on your print maps (optional).

Basemaps

Different basemaps can be selected on the right of the map. Not available in every map view.



Save



Current Map

Save your current map and any annotations on it.

Please enter a title (max 30 char):

Save

Close

- Click Save > My Map to save maps, along with annotations.
- Enter a title and click Save.
- Click Open to view saved maps.
- Select a map to view or delete.

Print



- Generate a file for printing.
- Available print size A4 to A0.
- PDF/PNG/JPG formats.
- Other options: select print scale, add title, add legend, annotations and map overlays.

Map Content

Enables you to select which combination of map features to display. Not available in every map view. Find on left of the screen.



- Map content
- Add annotations
- Save your map
- Create a print file

Map Information

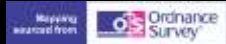
Find out which OS map product you are viewing and its date of creation in Map Information. On the left of the Roam screen.



Annotated map in Roam: university spaces Edinburgh



© Crown copyright/database right 2014. Ordnance Survey/EDINA supplied service. FOR EDUCATIONAL USE ONLY.





Historic Digimap tutorial

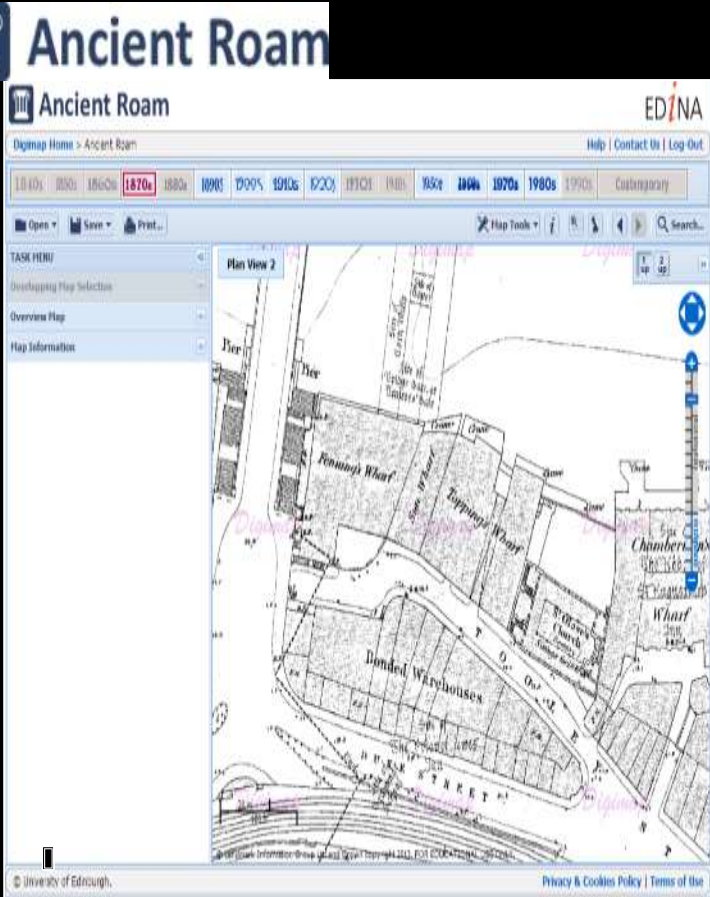
Ancient Roam



- Historic OS maps from 1830s to 1990s.
- Digitised by Landmark.
- Range of scales, from county to very detailed town plans.
- **Ancient Roam:** view by decade.
- **Historic Download:** download original map sheets or tiles referenced to National Grid.

Digimap tutorial:

Ancient Roam exercise 1

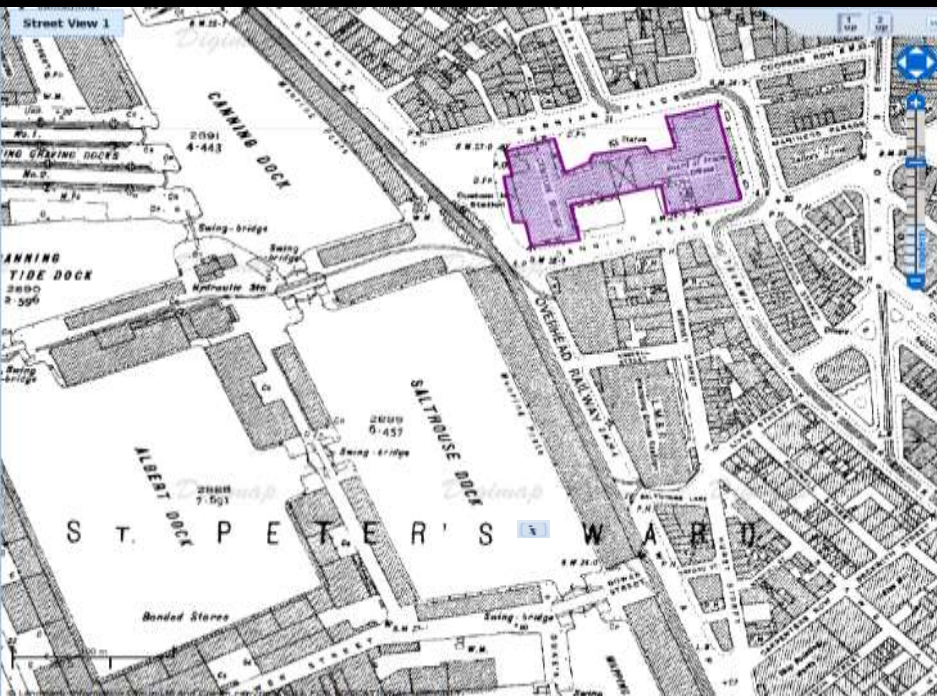


Spot the difference –
Find 3 functions unique to
Ancient Roam

TIPS How would you...

- View maps from different decades for your location?
- View 2 maps of the same location side by side?
- Select one map, where maps for the same area are overlapping?
- Find out the publication date of the map you are viewing?

Ancient Roam exercise 2: Recreate map of central Liverpool



1. Select Historic Digimap > Ancient Roam
2. Search for L3 4AA
3. Select 1920s
4. Zoom in to Street View 2, on the Custom House (highlighted on map above).
5. Select 2 up view – compare 1920s with 1960s. Return to 1up view (1920s map).
6. Add a polygon over Custom House (1920s map)
7. Save your map within Digimap. Name it Custom House.
8. Generate an A4 landscape PDF print of your map
9. Write down what map series, edition, scale and date you are viewing – click the information button then click on the map
10. Finally, open Roam Ordnance Survey and view your Custom House map – select **Open > My Maps**.

Digimap tutorial: Ancient Roam exercise 3

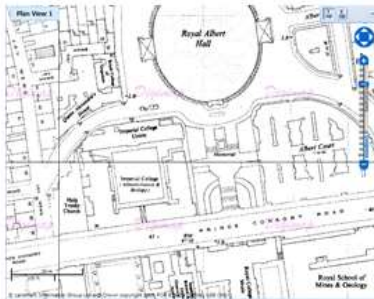
Make some Historic Maps

Our suggestions:

Search using SW7 2AZ.

Zoom into Plan views 1 and 2.

What was on the site of Imperial College London (behind Royal Albert Hall, bordered by Queens Gate and Princes Gate) in the 1870s?



Compare 2 maps of the area around Coventry Cathedral, pre WWII and post WWII.

Search using CV1 5AB. Cathedral is marked as St Michaels Church until 1930s maps.

Zoom into Street views.



Use your postcode to see what was on the site of your house!



Make some historic maps.
Annotate them, with spaces
indicated by blocks or
movement by lines...

Spatial, geographical, experiential turn: changing the practice of mapping

- Rethinking western-oriented mapping of spaces
- 'we cannot adequately study spatial systems, mapping conventions, landscapes of power and control, colonial networks, histories of emplacement and displacement, cultural flows and haemorrhages, sites of memory and oblivion without considering the media in which to map the complex interplay between lived and experienced spaces, representational spaces, and imaginary spaces' Pesner, 53
- Mapping to capture human behaviour, lived experience, social spaces, movement, mobility, change, practices, relational spaces, relationships, passage of time.
- Maps as spatial-temporal narratives

The **practice** of mapping

‘Mapping is a verb ... an ongoing process of picturing, narrating, symbolising, contesting... erasing, and re-inscribing a set of relations’

‘Maps are visual arguments and stories; they make claims and harbor ideals, hopes, desires, biases, prejudices, and violences. They are always relational’

‘When we georeference historical maps, we are not ‘correcting’ them or making them ‘accurate’: instead we are keying one representation to another representation (not to reality)’ [Presner et al, 15]

Thick and deep mapping

- ‘process of collecting, aggregating and visualizing ever more layers of geographic or place-specific data’
- ‘they embody temporal and historical dynamics through a multiplicity of layered narratives, sources, and even representational practices’
- thick is more than deep – moves horizontally and vertically
- Adding ‘**historical layers of meaning-making**’
- ‘Thick maps are not simply more data on maps, but interrogations of the very possibility of data, mapping and cartographic representational practices’

[Presner et al,2014, 17-19]

The effect of digitization: the implication of Historical GIS

- GIS not just a software tool, but an ‘approach to scholarship ... to representing and handling geographical information’
- Asks ‘what are the geographical aspects of my research question?’
- **Geolocates** data
- Explores and compares **spatial patterns** of the past
- **Time** can be added into space = study of temporal change
- **Blended approaches** of quantitative and qualitative
- Visualises spatial data (combo of attributes and locations)
- Deep or thick mapping

changing the practice of mapping

- Digitization capturing spatiality, time and phenomena
- 'alternative view of history & culture through the dynamic representation of memory & place, a view that is visual & experiential, fusing qualitative & quantitative data within real and conceptual space' [Bodenhamer, 2010, 29]
- Capturing spatial anthropology, space learnt in practice
- New mapping 'negation of transcendent cartographies of knowledge to incorporate new spaces, mobility, movement
- Participatory, empowering, community & personal mapping
- From a tool used by elites to one that empowers community and individuals? [Roberts, *Mapping Cultures*, 2012]

Geolocating texts, mapping routes: A Secret Golden Age App

Edinburgh Castle: Ane New Yeir Gift to the Quene Mary (Alexander Scott)



Mary Queen of Scots, after
Francois Clouet, c.1559

Mary returned to Scotland in 1561 after the death of her first husband, the French King Francis II. Her ship moored in the Port of Leith on 19 August. Although she was Queen of Scots, Mary had not been in Scotland since her departure to France aged five. She arrived back to a country riven by religious wars, an 18-year-old French Catholic queen in a newly Protestant Scotland.

After her arrival she was formally welcomed with a poem by the Scottish court bard Alexander Scott: *Ane New Yeir Gift to the Quene Mary quhen scho come first hame*, 1562. The opening lines of the poem vividly illustrate its ceremonial purpose, and the hope that Mary's reign will bring peace to Scotland. The references to heraldry remind listeners that the lion rampant of Scotland was surrounded by a border of lilies, denoting the 'Auld Alliance' of Scotland and

France.

*Welcum, illustrat ladye and oure Quene!
Welcum oure lyone with the floure delyce!
Welcum our thrissill with the Lorane grene!
Welcum, our rubent roiss upon the ryce!
Welcum, oure jem and joyfull genetryce!
Welcum oure beill of Albion to beir!
Welcum, oure plesand princes, maist of pryce!
God gif the grace aganis this gud new year.*

Palimpsest Project: LitLong mapping Edinburgh's texts



location visualiser

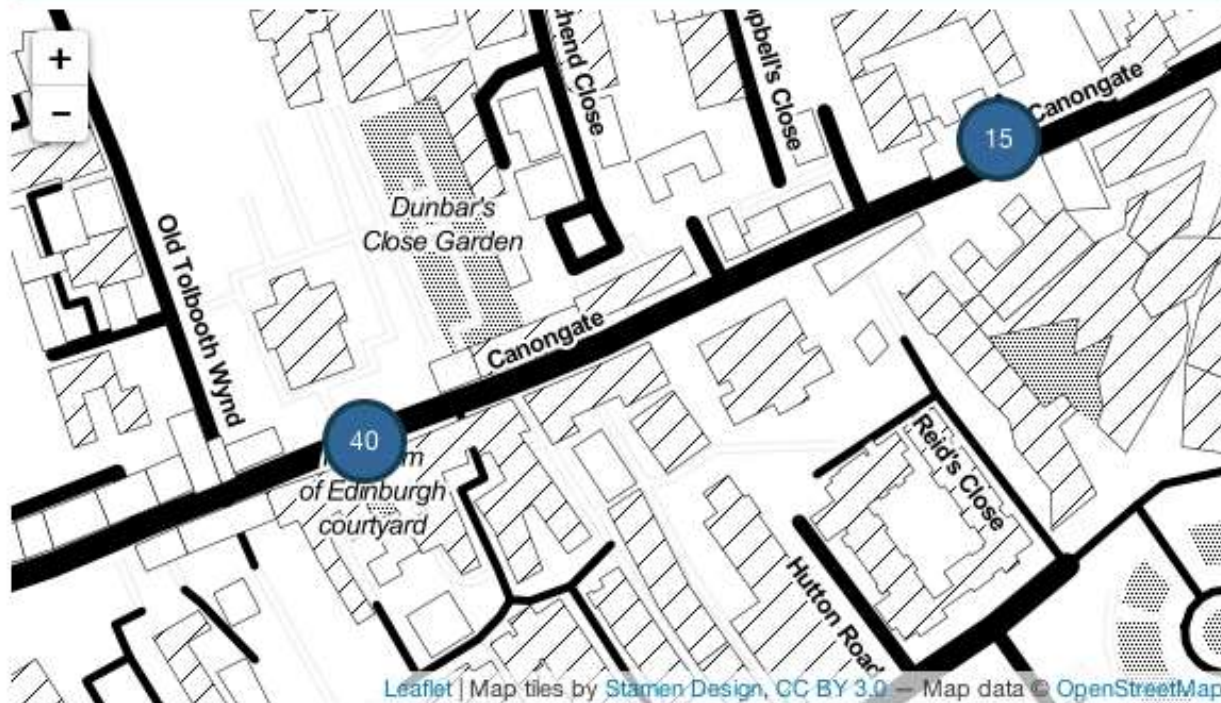
<http://litlong.edina.ac.uk/visualiser/location/>

keyword search

search for 0 location

author search [30 authors]

Mentions of Real-World Locations within Books



Leaflet | Map tiles by Stamen Design, CC BY 3.0 - Map data © OpenStreetMap

List of Books [32]

id=uiuo.ark:/13960/t75t44r6g



Scott, Walter, 1840
The Prose Works of Sir Walter Scott.
(Supplementary volume: containing notes, historical and illustrative, by the author, glossary, etc.)

<https://historicaltexts.jisc.ac.uk/bl-003316901-07>



Scott, Walter, 1846
Waverley Novels. (Abbotsford edition.)

<https://historicaltexts.jisc.ac.uk/bl-003317065-04>



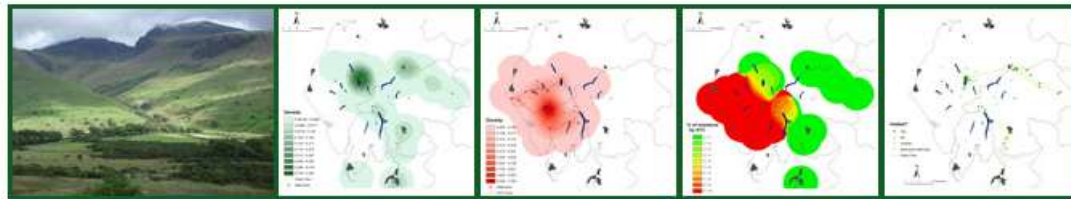
Knox, John, 1846
The works of John Knox;

<http://babel.hathitrust.org/cgi/pt?id=yale.39002007050355>



Mapping the Lakes: a Literary GIS: mapping space, place, movement, emotion

<http://www.lancaster.ac.uk/mappingthelakes/index.htm>



Mapping the Lakes: A Literary GIS

[GIS Home](#)

[Aims & Objectives](#)

[How to use this site](#)

[Gray's *Journal*](#)

[Coleridge's Tour](#)

[Gray & Coleridge
Comparative Maps](#)

Gray & Coleridge: Comparative Maps

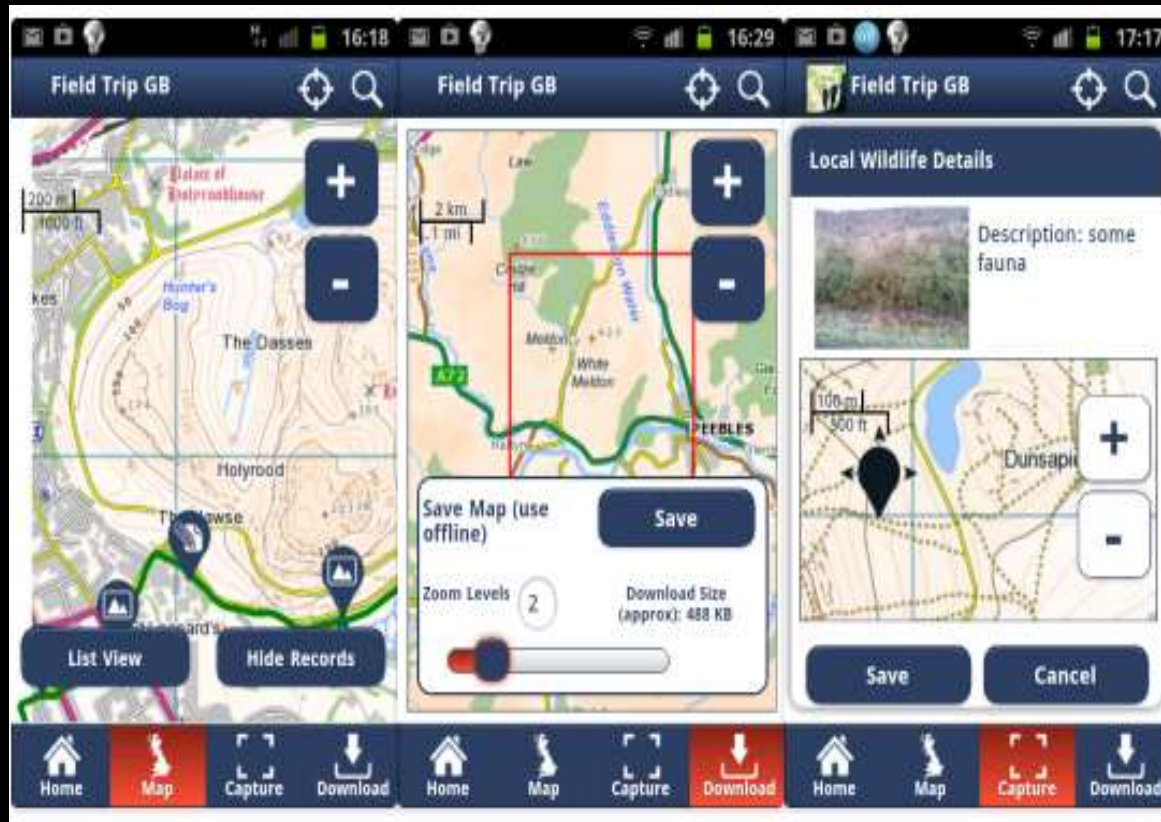
The decision to map out the geo-specific texts of Gray and Coleridge may seem a little arbitrary: the texts were written over thirty years apart; the accounts have contrasting, if equally convoluted, textual histories; and their composition was underpinned by different aims, ambitions and intentions. Yet this GIS pilot project is informed by the belief that comparative digital maps may highlight different spatial patterns across a range of seemingly disparate literary texts.

What happens, then, when the Gray and Coleridge GIS maps are placed alongside one another? Do these comparative maps illuminate the representations of space offered within both primary texts? By

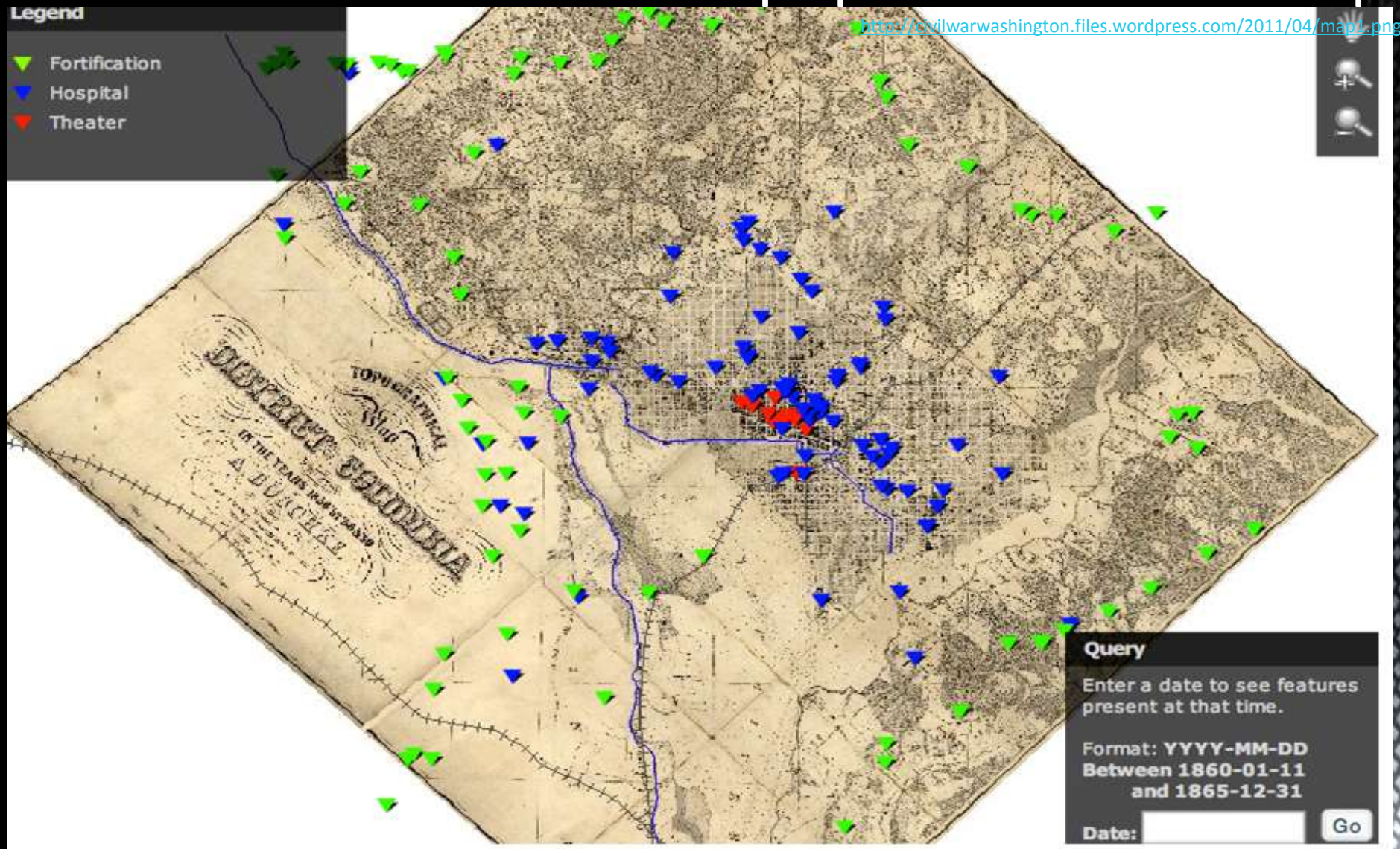
Mapping movement, capturing landscapes

Field Trip app, Edina

<http://fieldtripgb.blogs.edina.ac.uk/>



Thick mapping: Civil War experience in Washington: populated 1860s map:



Thicker mapping: HyperCities

<http://hypercities.com>



search

Home About Research Education Getting Involved Getting Started Help



Launch HyperCities

HyperCities is a collaborative research and educational platform for traveling back in time to explore the historical layers of city spaces in an interactive, hypermedia environment.

Recent Posts

[KML \(Draft\)](#)

manok | August 1, 2013 | In How To

[NEH Summer Institute at UCLA: Digital Cultural Mapping \(June 18-July 6, 2012\)](#)

presner | December 16, 2011 | In Uncategorized

[HyperCities Los Angeles Launches](#)

presner | August 29, 2011 | In Uncategorized

NEH Summer Institute at UCLA: Digital Cultural Mapping (June 18-July 6, 2012)

by presner | December 16, 2011 | In Uncategorized

1 comment

Directed by: Todd Presner, Diane Favro, and Chris Johanson

Please visit <http://hypercities.com/NEH> for the full schedule

We are pleased to announce the 12 participants in the 2012 NEH Summer Institute for Advanced Topics in the Digital Humanities:

HyperCities, Berlin 1650 overlays

<http://hypercities.ats.ucla.edu>

The screenshot displays the HyperCities interface for Berlin. The main view is a 3D satellite map with a historical map overlay from 1650. The interface includes a timeline at the top left showing dates from 2000 BCE to 3000, with markers for 1237 and 2014. Navigation tools are on the left, and a world map is at the top right. A list of historical maps is on the right side.

Timeline: 2000 BCE, 1237, 2014, 3000

Navigation: N, Eye, Hand, +, -

World Map: Google, Terms of Use, Report a map error

Map Settings:
 automatically refresh maps and collections
 3D buildings Roads Borders Terrain
 historical image

MAP (49) | COLLECTION

- 1650 Berlin 1650: Nach** [Info] [Close]
- 1650 Johann Gregor Memhard**
Johann Gregor Memhard Map [Info] [Close]
- 1685 LaVigne Map Detail**
LaVigne Map Detail [Info] [Close]

Scale: 941 m

Google earth
Terms of Use

Imagery Data: 1943, 25/2012 **Coordinates:** 52°31'23.50" N 13°22'15.27" E **elev** 32 m **eye alt** 4.10 km

HyperCities: the digital book

<http://thebook.hypercities.com>

HyperCities Thick Mapping in the Digital Humanities

Todd Presner, David Shepard, and Yoh Kawano

with contributions by Philip Ethington, Mike Blockstein, Reanne Estrada, Chris Johanson, Diane Favro, and Xárene Eskandar

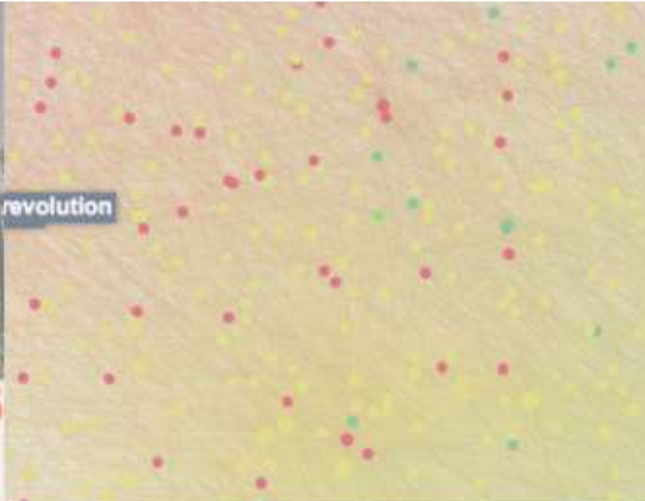
READ



Protesters setting up barricade against Basij l...



Los Angeles Citizen Research Collections: A Collaborative Mapping Platform



```
/**  
 * Initialize HyperCities Earth  
 * @return void  
 */  
initEarth: function() {  
  try {  
    HyperCities.util.debug(_id + 'init() called.')  
    // Check necessary environments were enabled  
    if (!HyperCities.util.checkEnv()) return;
```



Mapping Edinburgh's Social History MESH



ABOUT

OUTPUTS

GET INVOLVED

NEWS AND EVENTS

CONTACT US

<http://www.mesh.ed.ac.uk>

About

Objectives

Partners

Team

Mapping Edinburgh's Social History

The MESH project is funded by one of the UK's Research Councils – the AHRC. It brings together people with an interest in the history of Edinburgh. The project team will develop a variety of 'open source' tools –

Thickest mapping: Phil Ethington's GhostMetropolis

<http://hypercities.com/blog/2009/07/30/featured-collection-ghost-metropolis/>

Featured Collection: Ghost Metropolis

by presner | July 30, 2009 | In Featured Collections



Recent Posts

[HyperCities book published with new website](#)

presner | June 5, 2014 | In Uncategorized

[ML \(Draft\)](#)

manok | August 1, 2013 | In How To

[UEH Summer Institute at UCLA: Digital Cultural Mapping \(June 18-July 6, 2012\)](#)

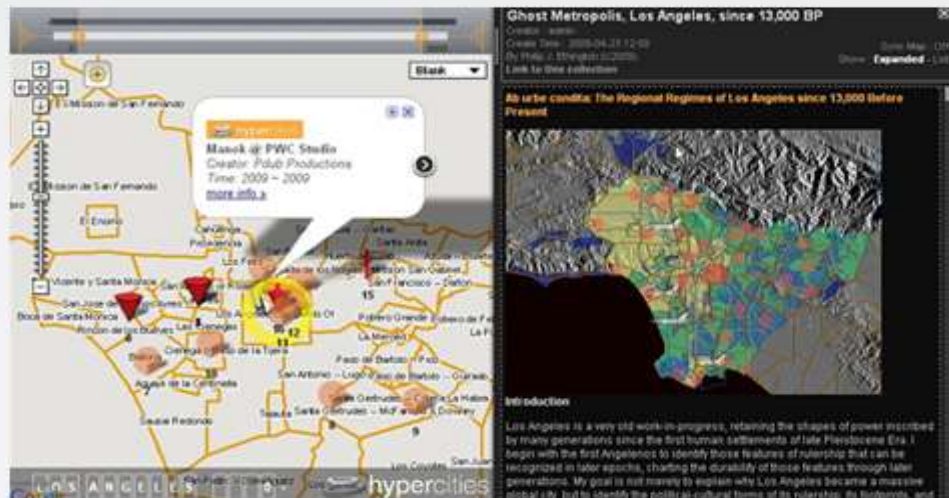
presner | December 16, 2011 | In Uncategorized

[HyperCities Los Angeles Launches](#)

presner | August 29, 2011 | In Uncategorized

[How to Navigate a HyperCities Collection](#)

David Shepard | July 14, 2011 | In How To



Split-screen view of Ghost Metropolis (right) with map of 1784-1846 Spanish-Mexican Rancho Land Grants (left) overlaid with a link to a community-created video of Historic Filipinotown (2009)

Composed by Philip Ethington (USC, History and Political Science), **Ghost Metropolis** is a global history of Los Angeles since earliest human habitation, written in narrative, non-academic prose, presented in print form as a hybrid of textual, cartographic, and photographic representation, in print, online (**HyperCities**), and public art formats. **Ghost Metropolis** is a 21st-century "Atlas," inspired by the Renaissance atlases of the 16th and 17th century, which are rich mixtures of typography, graphic arts, and of course cartography. How does a global metropolis come into being? How can we see such an impossibly large and complex urban center—especially one that is so fragmented, so massive, socially diverse, economically variegated, and politically complex?

Click on the YouTube video below to preview this collection:

Map of Early Modern London

THE AGAS MAP OF EARLY MODERN LONDON

Draw a shape Show labels

Locations by category

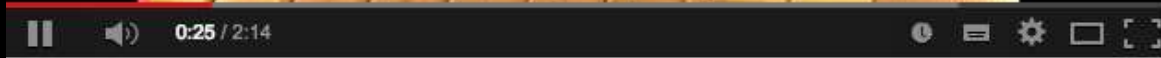
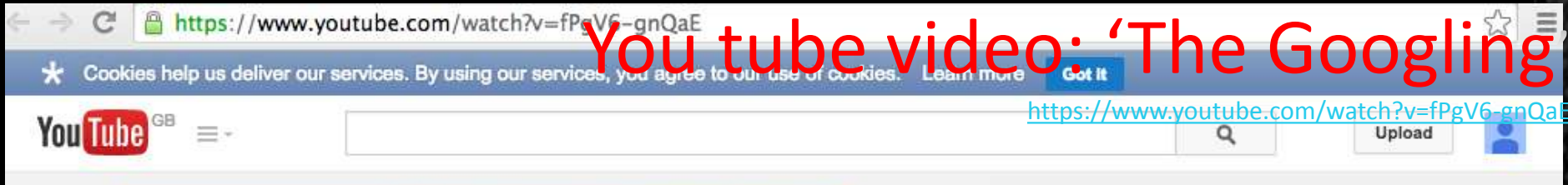
- Bridges
- Churches
- Gates
- Halls
- Non-textual markings
- Transcriptions of text
- Markets
- Neighbourhoods
- Playhouses
- Sites
- Streets
- Taverns
- Topographical Features
- Wards

<https://mapoflondon.uvic.ca/agas.htm>

The map shows a dense urban area with a grid of streets, numerous buildings, and a prominent river (the Thames) flowing through the center. A banner at the top of the map reads "CIVITAS LONDINVM". The map is overlaid with a digital interface for interactive exploration, including a search bar, a list of categories, and a zoom control.

Digitized mapping's implications: new tools for power?

You tube video: 'The Googling'



Google Maps (Part I of "The Googling")

thevacationeers

[Subscribe](#) 5,607

3,781,036

[Add to](#) [Share](#) [More](#)

10,626 [Dislike](#) 566

AD Fanta

[Subscribe](#) 27K

[Visit Advertiser's Site](#)

- Mix - Google Maps (Part I of "The Googling")**
by YouTube
- Google Cram (part 2 of "Higher Googling")**
by thevacationeers
44,849 views
- Googling Yourself (Part 1 of "Higher Googling")**
by thevacationeers
190,886 views
- Maximum Strength Google (Part 3 of "Higher Googling")**
by thevacationeers
29,637 views